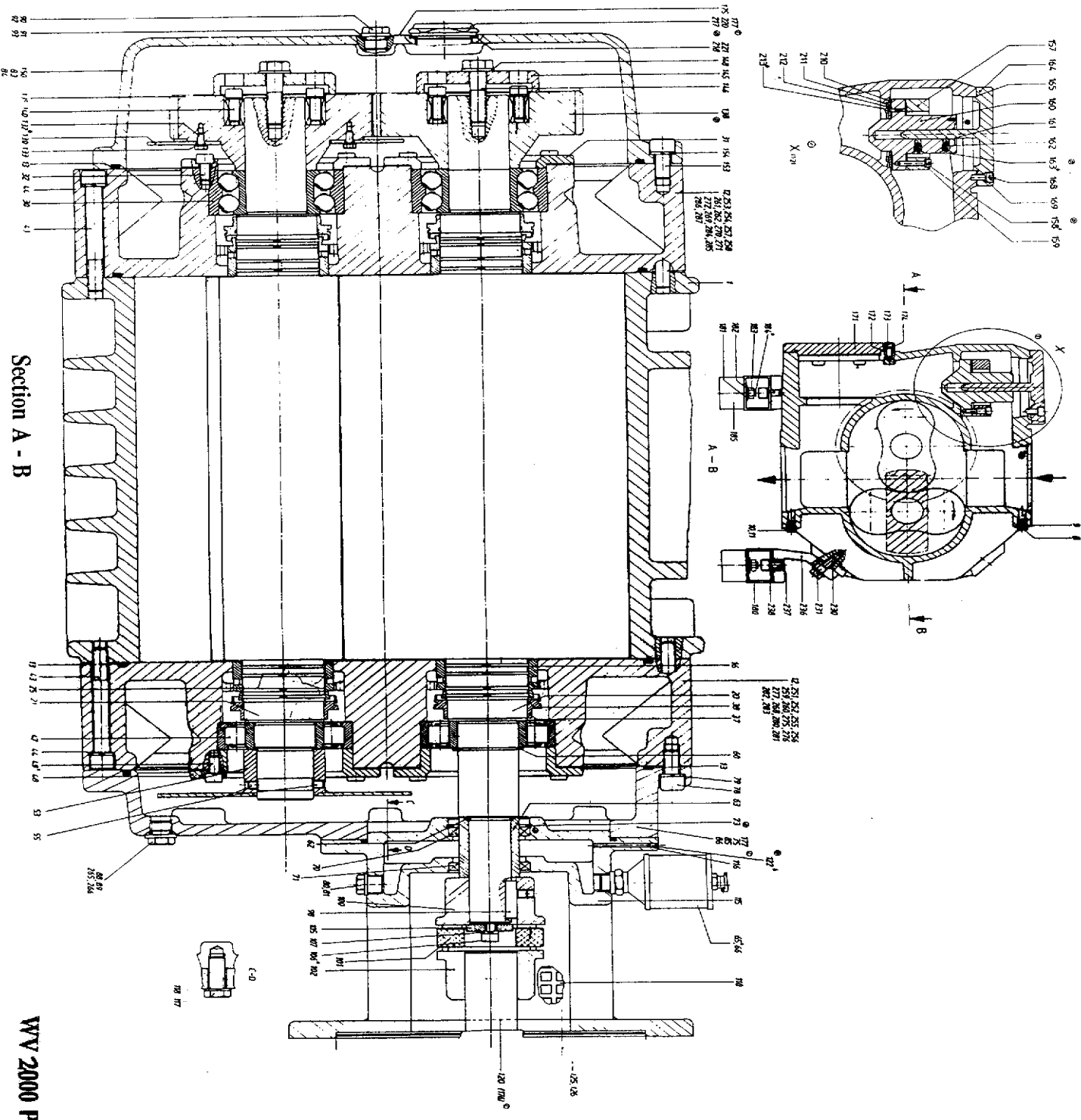


WV 1000 Panda



Section A - B

WV 2000 Panda

Ref.	Description	500	1000	Ref.	Description	500	1000	
	Cylinder	1	1	110	Screen	1	1	
	Pin, Rolled	8x30mm	6	120	Motor	1	1	
6	Pin, Rolled	10x30mm	6	125	Screw, Socket Head Cap	M8x30mm	4	4
8	Plug	R-3/8"	2	126	Lockwasher	M8	4	4
9	O-ring, Viton	15x2.5mm	2	130	Plate, Splash		1	1
10	O-ring		1	132	Screw, Fillet Head Machine	M4x8mm	2	
11	Plug		1	132	Screw, Fillet Head Machine	M6x10mm		2
12	Endplate		2	135	Gear, Helical (Driven Rotor)		1	1
13	O-ring, Viton	222x5mm	4	138	Gear, Helical (Drive Rotor)		1	1
13	O-ring, Viton	295x5mm		140	Element, Gear Tension, Set	24x28mm	1	
16	Sleeve, Labyrinth		4	140	Element, Gear Tension, Set	32x36mm		1
20	Rotor, Drive		1	141	Ring, Distance	24.2x27.8x5mm	2	
21	Rotor, Driven		1	141	Ring, Distance	32.2x35.8x8.4mm	2	
25	Seal, Labyrinth	038x2.5mm	12	145	Plate, Pressure		2	2
25	Seal, Labyrinth	046x2.5mm		146	Screw, Socket Head Cap	M8x20mm	10	
30	Bearing, Roller	25x52x18mm	2	146	Screw, Socket Head Cap	M8x25mm		10
30	Bearing, Roller	35x72x23mm		147	Lockwasher	M8	10	10
31	Washer, Belleville	51.5x35.5x.6mm	4	150	Plate, Cover		1	1
31	Washer, Belleville	71.5x50.5x.7mm		153	Screw, Socket Head Cap	M8x20mm	4	
32	Ring, Retaining	0.52x2mm	2	153	Screw, Socket Head Cap	M10x25mm		4
32	Ring, Retaining	0.72x2mm		160	Valve, Bypass		1	1
43	Screw, Socket Head Cap	M8x70	6	161	Friction Pin		1	1
43	Screw, Socket Head Cap	M10x80		162	Spring, Pressure, Bypass		1	1
47	Bearing, Ball, Self Aligning	25x52x18mm	2	163	Screw, Spring Tension, Bypass		1	1
47	Bearing, Ball, Self Aligning	35x72x23mm		164	Cover, Valve, Bypass		1	1
48	Washer, Belleville	51.5x35.5x.6mm	4	165	O-ring, Viton, Bypass	75x3mm	1	
48	Washer, Belleville	71.5x50.6x.7mm		165	O-ring, Viton, Bypass	85x3mm		1
49	Ring, Retaining	052x2mm	2	166	Loctite, NR245 (for Ref. 16)			as req.
49	Ring, Retaining	072x2mm		168	Screw, Socket Head Cap	M8x20	4	4
	Spacer, Distance		1	169	Lockwasher	M8	4	4
	Plate, Splash		1	175	Nameplate		1	1
54	Plate, Locking		1	176	Decal, Arrow		1	1
55	Collar, Locking		1	177	Decal, Oil Level		1	1
60	Ring, Spacer		1	200	Shim, Axial	25.2x32x.1mm		as req.
62	O-ring, Viton	024x3mm	1	200	Shim, Axial	35.2x44x.1mm		as req.
62	O-ring, Viton	032x3mm		201	Shim, Axial	25.2x32x.05mm		as req.
63	Race, Shaft Seal		1	201	Shim, Axial	35.2x44x.05mm		as req.
65	Cup, Oil Sealing	R-3/8"	1	210	Disk		1	1
66	O-ring, Viton	015x2.5mm	1	211	Disk		1	1
70	Seal, Shaft, Viton	035x47x7mm	3	212	Washer	M5	1	1
70	Seal, Shaft, Viton	045x60x8mm		213	Screw	M5	1	1
71	Ring, Spacer		1	220	Sight Glass, Oil		1	1
73	Ring, Snap		1	221	O-ring		1	1
75	Bracket, Motor Mounting		1	251	Plug		1	1
78	Screw, Socket Head Cap	M8x20	4	252	O-ring		1	1
78	Screw, Socket Head Cap	M10x25		253	Plug		1	1
80	Plug	R-3/8"	1	254	O-ring		1	1
81	O-ring, Viton	015x2.5mm	1	255	Plug		1	1
85	Sight Glass, Oil	R-1 1/4"	2	256	O-ring		1	1
86	Gasket, Oil Sight Glass	42x50x2mm	2	257	Plug		1	1
88	Plug	R-3/8	2	258	O-ring		1	1
89	O-ring, Viton	015x2.5mm	2	270	Plug, Plastic		1	1
98	Key, Shaft	8x7x25mm	1	271	Plug, Plastic		1	1
98	Key, Shaft	10x8x36mm		272	Plug, Plastic		1	1
100	Coupling, Half, Pump Side	Rotex 24	1	275	Plug, Plastic		1	1
100	Coupling, Half, Pump Side	Rotex 38		276	Plug, Plastic		1	1
101	Insert, Coupling (for Rotex 24mm)		1	277	Plug, Plastic		1	1
101	Insert, Coupling (for Rotex 38mm)			400	Cover, Outlet, Alternate		1	1
102	Coupling, Half, Pump Side	Rotex 24	1	405	O-ring	83x4mm	1	1
102	Coupling, Half, Motor Side	Rotex 38		411	Washer	M8	8	8
105	Disk, Tension		1	412	Screw	M8	8	8
106	Screw, Socket Head Cap	M8x20mm	1					
107	Lockwasher	M8	1					

Ref	Description		WV2000	Ref	Description		WV2000
1	Cylinder		1	106	Screw, Socket Head Cap		1
6	Pin, Rolled	10mm	4	107	Washer, Lock		1
8	Plug, Pipe	3/8	1	110	Screen		1
9	O-Ring	15 x 2.5mm	1	115	Motor Flange		1
10	Plug, Pipe	3/8	1	116	O-ring		1
11	O-ring	15 x 2.5	1	117	Screw, Cap, Hex Head		4
12	Endplate		2	118	Washer, Lock		4
13	O-ring	380 x 5mm	4	120	Motor		1
16	Sleeve, Labyrinth		4	122	Stud		1
20	Rotor, Drive		1	125	Screw, Hex Head	M10 x 30	4
21	Rotor, Driven		1	126	Washer		4
25	Seal, Labyrinth		16	130	Plate, Splash		1
30	Bearing, Roller		2	132	Screw, Cap, Hex Head	M5 x 16	2
31	Washer, Belleville		2	133	Washer, Lock	M5	2
32	Screw, Socket Head Cap	M8	6	135	Gear, Helical (Driven)		1
37	Mechanical Seal		4	138	Gear, Helical (Drive)		1
38	O-ring	59 x 2mm	4	140	Screw, Cap, Socket Head		2
43	Screw, Socket Head Cap	M12 x 100	16	145	Plate, Pressure		2
44	Washer, Lock	M12	16	146	Screw, Cap, Hex Head		2
47	Bearing, Ball, Self-Aligning		2	148	Washer		2
48	Retainer, Bearing		2	150	Plate, Cover		1
49	Screw, Socket Head Cap	M8 x 16mm	6	153	Screw, Cap, Hex Head	M12 x 25	4
53	Plate, Splash		1	154	Washer	M12	4
55	Set Screw		2	157	Spacer, Bypass		1
60	Ring, Spacer		1	158	Screw, Cap, Socket Head		2
62	O-ring	32 x 3mm	1	159	Washer, Lock		2
63	Race, Shaft Seal		1	160	Valve, Bypass		1
65	Cup, Oil Seal		1	161	Guide, Spring		6
66	O-ring	14 x 2.5mm	1	162	Spring, Coil		6
70	Seal, Shaft		1	163	Screw, Spring Tension Bypass		6
71	Seal, Shaft		1	164	Cover, Valve Bypass		1
73	Snap, Ring		1	165	O-ring	135 x 3mm	1
75	Housing		1	168	Screw, Cap, Socket Head	M10 x 30	4
78	Screw, Socket Head Cap	M12 x 25mm	4	169	Washer, Lock	M10	4
79	Washer, Lock	M12	4	171	Cover, Outlet Alternate		1
80	Plug		1	172	O-ring	152 x 3mm	1
81	O-ring		1	173	Screw, Cap, Socket Head	M10 x 25mm	8
83	Plug		1	174	Washer, Lock	M10	8
84	Gasket		1	175	Nameplate		1
85	Sight Glass, Oil		1	176	Label, "Arrow"		1
86	Gasket, Oil, Sight Glass		1	177	Label		1
88	Plug		1	180	Rail, Mounting		2
89	O-ring	15 x 2.5mm	1	181	Washer		4
90	Plug		1	182	Washer, Lock		4
91	O-ring		1	184	Stud	M12 x 30	4
92	Plug		1	185	Foot		4
93	O-ring		1	190	Flange, Blind		1
98	Key, Shaft		1	200	Flange, Blind		1
100	Coupling, Half, Pump Side	Rotex 38	1	210	Washer	130mm	1
101	Insert, Coupling, Motor	Rotex 38	1	211	Washer	118mm	1
102	Coupling, Half, Motor Side	Rotex 38	1	212	Protector, Sheet Metal		3
105	Disk, Tension		1	213	Screw, Cap, Hex Head	M5 x 16	3

<b>Ref</b>	<b>Description</b>	<b>WV2000</b>
217	Plug, Sight Glass	1
218	Gasket, Plug, Sight Glass	1
220	Sight Glass	1
221	Gasket, Sight Glass	1
230	Screw, Cap, Hex Head	M16 x 45
231	Washer	4
235	Pin	4
237	Screw, Cap, Socket Head	M16 x 30
238	Washer	4
258	O-ring	15 x 2.5
259	Plug	1
260	O-ring	15 x 2.5
261	Plug	1
262	O-ring	1
265	Plug	1
266	O-ring	1
268	Plug	1
269	Plug	1
270	Cap, Plastic	1
271	Cap, Plastic	1
272	Cap, Plastic	1
275	Cap, Plastic	1
276	Cap, Plastic	1
277	Cap, Plastic	1
280	Plug	1
281	Gasket	1
282	Plug	1
283	Gasket	1
284	Plug	1
285	Gasket	1
286	Plug	1
287	Gasket	1