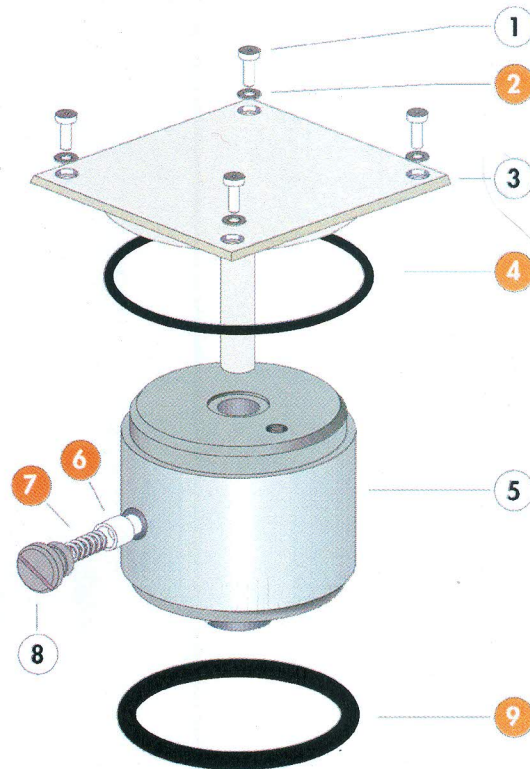


## Roots 602 P/L - By-pass components

### **B** By-pass components



Rep.	Description	Qty*	P/N
1	Screw CHc M 6 x 10	1/4	050393
2	Onduflex washer M 6	1/4	Maint. kit
3	Cover	1/1	060115
4	O-Ring 3xØ80	1/1	Maint. kit
5	By-pass stop valve	1/1	060114
6	Block	1/1	Maint. kit
7	Spring	1/1	Maint. kit
8	Setting screw	1/1	060117
9	O-Ring 5.33xØ56.52	1/1	Maint. kit

\* Quantity / Total Quantity