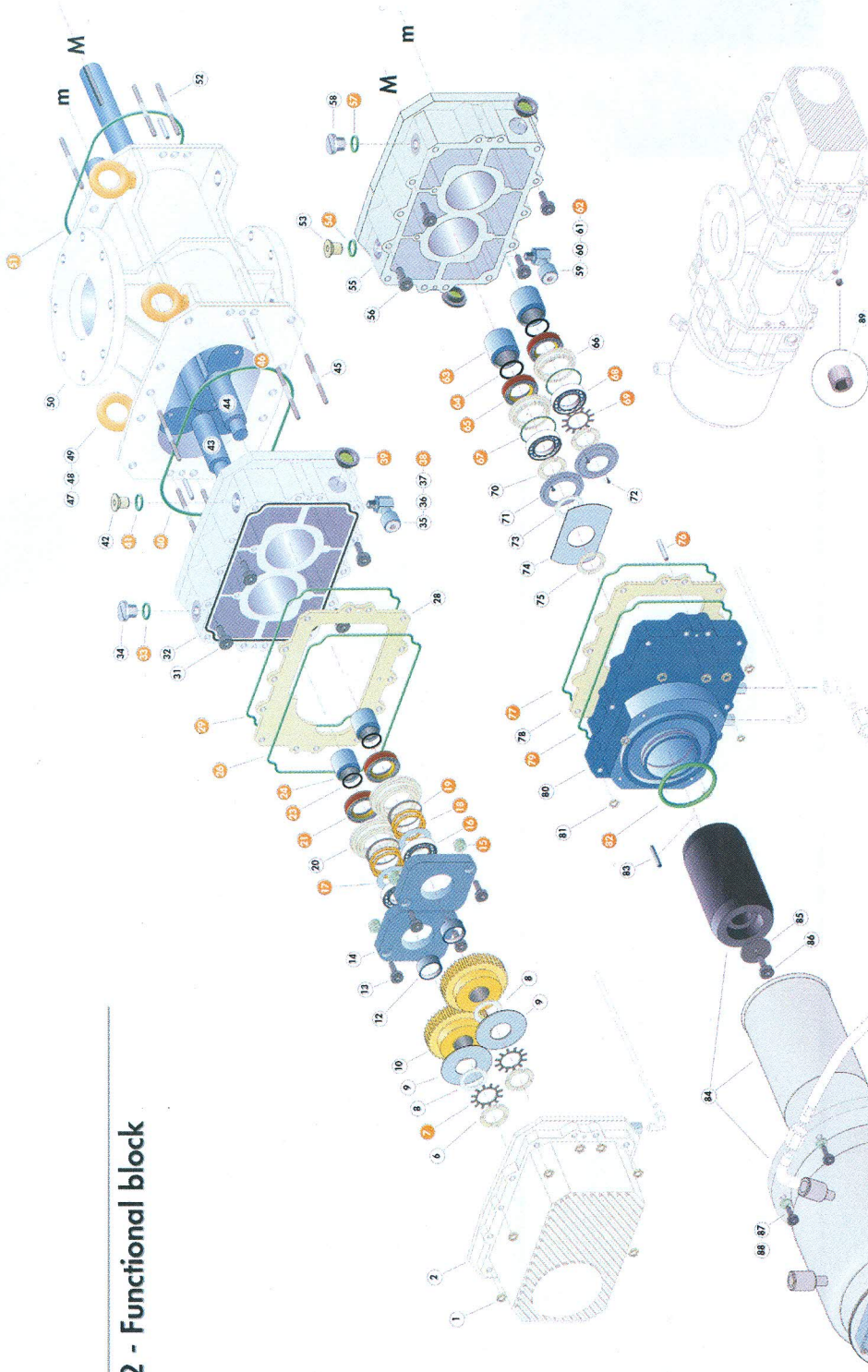




ROOTS 1002 - Functional block



Rep.	Description	Qty*	P/N
1	Nut H - M 10	10/20	071217
2	Gearbox casing	1/1	106140
6	Nut KM 8	2/2	104794
7	Spring washer - MB 8	2/2	Maint. kit
8	Spacer	2/2	104398
9	Lubrication disk - gear side	2/2	104396
10	Set of gears	1/1	106350
12	Spacer (opposite motor side)	2/2	104399
13	Screw CHc - M10 - 35	4/4	104711
14	Bearing flange	2/2	106392
15	Strip-off shim	4/4	Maint. kit
16	Calibrated washer (if necessary)	2/2	Maint. kit
17	Angular ball bearing	2/2	Maint. kit
18	Sealing washer	2/2	Maint. kit
19	Spring washer Borelly	4/4	Maint. kit
20	Circlips	2/2	Maint. kit
21	Deflector (opposite motor side)	2/2	106390
23	Shaft seal [76 x 61 x 8]	2/4	Maint. kit
24	O-Ring C2 D50	2/4	Maint. kit
26	Friction ring	2/4	Maint. kit
28	O-Ring C3 D255	1/2	Maint. kit
28	Sealing plate	1/2	106056
29	O-Ring C3 D305	1/4	Maint. kit
31	Screw CHc M10 - 70	4/8	106791
32	Flange (opposite motor side)	1/1	Maint. kit
33	O-Ring C2.7 Ø13.6	1/2	106409
34	Blank of flange M12	1/2	100045
35	Adaptor	1/2	100046
36	Drain pipe	1/4	076791
37	Plug	1/4	Maint. kit
38	O-Ring C2.7 D18.4	4/4	Maint. kit
39	Oil sight glass	1/4	Maint. kit
40	Idem 29	1/4	Maint. kit
41	Idem 38	1/4	Maint. kit
42	Idem 37	1/4	Maint. kit
43	Driven shaft - Roots 1001/1002	1/1	104792
44	Driving shaft - Roots 1001/1002	1/1	104791
45	Bolt M10 x 117	10/20	104799
46	Centering plug	4/6	Maint. kit
47	Hoisting rings	4/4	076190
48	Washer L12	4/4	073307
49	Nut H M12 - 8.8	4/4	071230
50	Stator - Roots 1001/1002	1/1	106094
51	Idem 29	1/4	Maint. kit
52	Idem 45	10/20	Maint. kit
53	Idem 37	1/4	Maint. kit
54	Idem 38	1/4	Maint. kit
55	Motor flange	1/1	106116
56	Idem 31	4/8	Maint. kit
57	Idem 33	1/2	Maint. kit
58	Idem 34	1/2	Maint. kit
59	Idem 35	1/2	Maint. kit
60	Idem 36	1/2	Maint. kit
61	Idem 37	1/4	Maint. kit

* Quantity / Total Quantity

..... Cooling circuit parts (see F 520)

● Parts included in the maintenance kit
 — DRIVING shaft (D)
 — Driven shaft (d)

Rep.	Description	Qty*	P/N
76	Idem 46	2/6	-
77	Idem 29	1/4	-
78	Idem 28	1/2	-
79	Idem 26	1/2	-
80	Motor casing	1/1	106139
81	Idem 1	10/20	Maint. kit
82	O-Ring C5.33 - D91.44	1/1	104802
83	Parallel key	1/1	102633
84	Three-phase motor	1/1	104395
85	Rotor motor washer	1/1	075438
86	Screw H M12 - 40	1/1	073455
87	Ondulflex washer D8	4/4	075514
88	Screw CHc M 8 x 20	4/4	102554
89	Coniform plug 1/4 BSP	1/1	-

Rep.	Description	Qty*	P/N
62	Idem 38	1/4	-
63	Idem 24	2/4	-
64	Idem 23	2/4	-
65	Idem 21	2/4	-
66	Deflector (motor side)	2/2	106391
67	O-Ring C3 D88	2/2	Maint. kit
68	Bearings (motor side)	2/2	Maint. kit
69	Spring washer KM 10	1/1	Maint. kit
70	Nut KM 10	2/3	104795
71	Oil regulator	2/2	107246
72	Screw CHc - M4 - 12	4/4	075519
73	Ring	1/1	104394
74	Lubrication disk (motor side)	1/1	104397
75	Idem 70	1/3	-