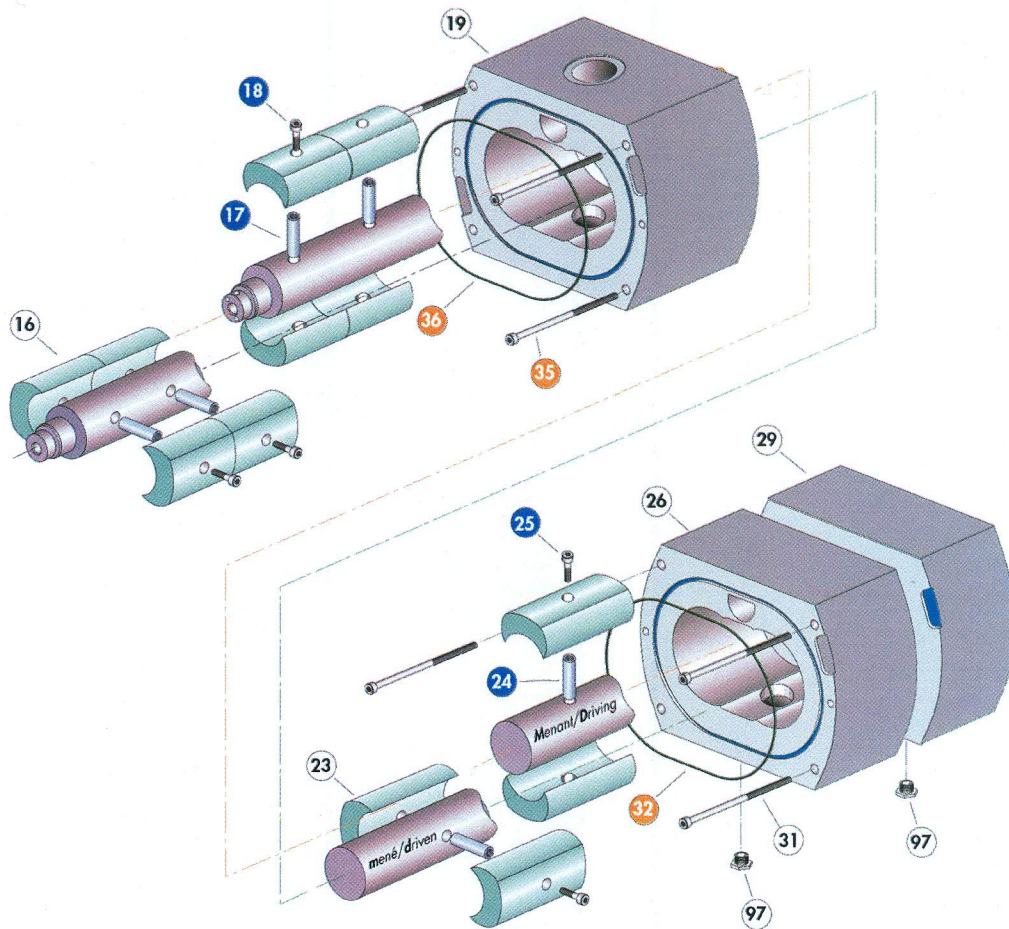


LP1, LP2, LP3 stage components



Edition 01 - August 99

Rep.	Description	Qty*	P/N	Rep.	Description	Qty*	P/N
16	LP1 lobe	8/8	106325	26	Stator LP2	1/1	106476
17	Threaded pin	4/12	105154	29	Stator LP3	1/1	106475
18	Screw CHc M 6 x 35	8/24	107054	31	Screw CHc M 6 x 80	8/8	074048
19	Stator LP1	1/1	106479	32	O-ring 3 x ø 211.82	2/10	Seals Kit
23	LP2 - LP3 lobe	8/8	105150	35	Screw CHc M 6 x 120	4/4	105898
24	Idem 17	4/12	-	36	Idem 32	1/10	-
25	Idem 18	8/24	-	97	Male plug (L model)	2/5	082930

* Quantity / Total Quantity