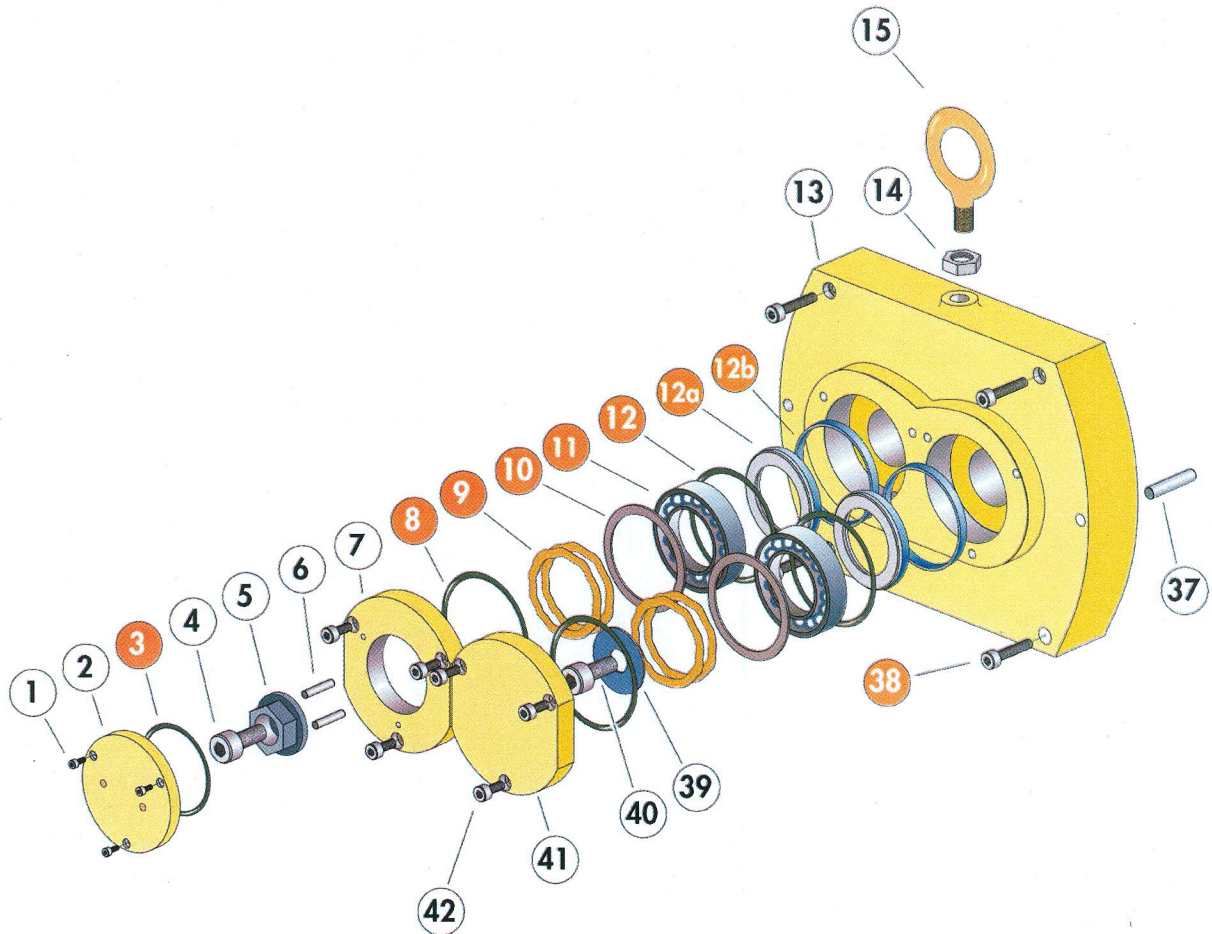


## LP support components, P model



| Rep. | Description        | Qty* | P/N        |
|------|--------------------|------|------------|
| 1    | Screw CHc M 4 x 10 | 3/3  | 084093     |
| 2    | End cap            | 1/1  | 105464     |
| 3    | O-Ring 2 x ø 35    | 1/1  | Seals Kit  |
| 4    | Screw CHc M 8 x 17 | 1/2  | 061941     |
| 5    | Driving nut        | 1/1  | 051928     |
| 6    | Needle ø 4 x 15.8  | 2/3  | 071052     |
| 7    | LP bearing cover   | 1/1  | 102916     |
| 8    | O-ring 2.5 x ø 52  | 2/2  | Seals Kit  |
| 9    | Borrelly washer    | 4/4  | Maint. Kit |
| 10   | Washer             | 2/2  | Maint. Kit |
| 11   | Ball bearing       | 2/2  | Maint. Kit |
| 12   | O-Ring 2.5 x ø 45  | 2/2  | Seals Kit  |

| Rep | Description            | Qty* | P/N        |
|-----|------------------------|------|------------|
| 12a | Lip seal               | 2/2  | Maint. Kit |
| 12b | Friction ring          | 2/2  | Maint. Kit |
| 13  | LP support             | 1/1  | 106477     |
| 14  | Nut                    | 1/2  | 071216     |
| 15  | Lifting ring           | 1/2  | 076189     |
| 37  | Centering Pin ø 8 x 30 | 2/10 | 060267     |
| 38  | Screw CHc M 6 x 20     | 4/40 | 050149     |
| 39  | Washer                 | 1/1  | 060242     |
| 40  | Idem 4                 | 1/2  | -          |
| 41  | LP bearing cover       | 1/1  | 102915     |
| 42  | Screw CHc M 6 x 16     | 6/6  | 082367     |

\* Quantity / Total Quantity