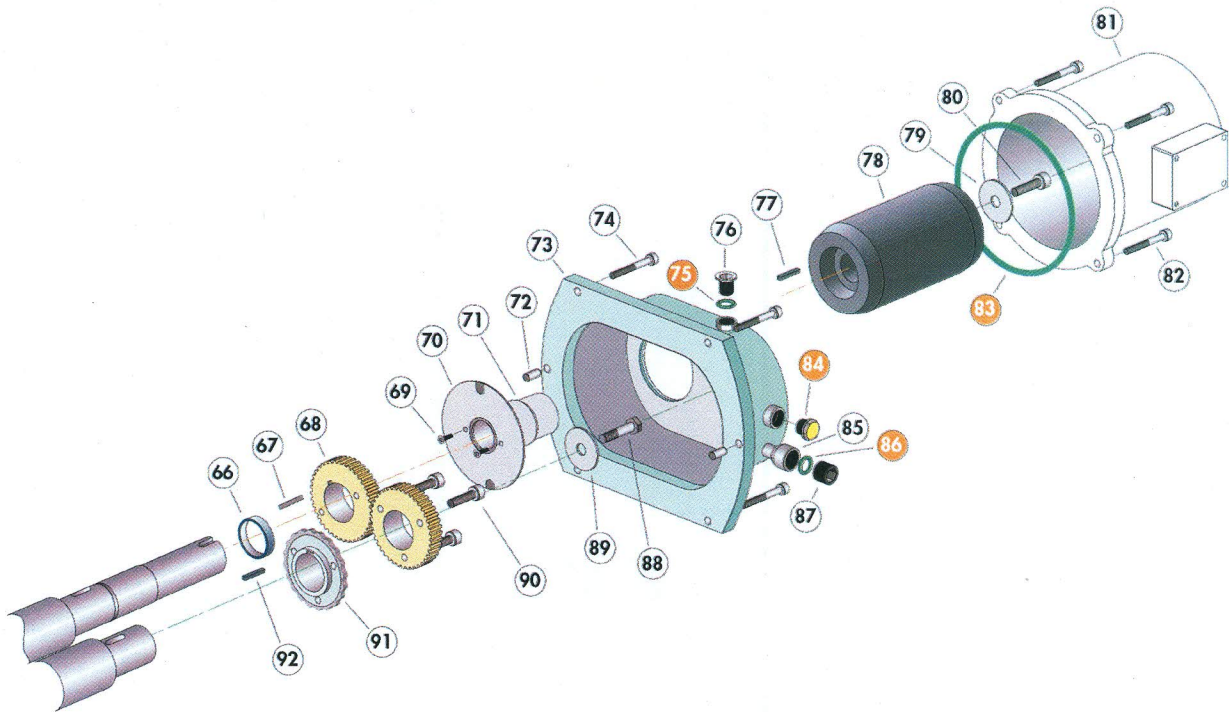


## Gearbox casing and motorization components



Rep.	Description	Qty*	P/N	Rep	Description	Qty*	P/N
66	Spacer	1/1	105159	80	Screw CHc M 8 x 25	1/1	050389
67	Key for driving shaft	1/1	060271	81	Motor - Stator	1/1	108117
68	Set of motering gears	1/1	105155	82	Screw CHc M 8 x 25	4/4	082736
69	Screw FSM 3 x 5	2/2	084031	83	O-ring 3 x ø 154.5	1/1	Seals kit
70	Lubrication plate	1/1	061951	84	Oil level indicator	1/1	Seals kit
71	Plate support sleeve	1/1	105162	85	Waste pipe	1/1	100046
72	Centering pin ø 8 x 12	2/2	071046	86	Idem 75	1/2	-
73	Gearbox casing	1/1	106478	87	Idem 76	1/2	-
74	Screw CHc M 6 x 20	8/40	050149	88	Screw HM 8 x 25	1/1	075428
75	O-ring 2.7 x ø 18.4	1/2	Seals kit	89	Clamping washer (gears)	1/1	105156
76	Plug connector B 1/2	1/2	076791	90	Left-hand thread screw M6 x 20	3/3	107083
77	Needle ø 4 x 15.8	1/3	071052	91	Driving plate	1/1	105161
78	Motor-Rotor (incl. in 81)	1/1	-	92	Key for driven shaft	1/1	105160
79	Clamping rotor washer	1/1	061955				

\* Quantity / Total Quantity