

SECTION 4: ILLUSTRATED PARTS LIST

4-1. Introduction.

This section provides a parts list and accompanying exploded view for the Model 8890 Vacuum Pump. Table 4-1 is the parts list, and Figure 4-1 is the exploded view of the pump. Parts unique to the models with isolation valves are designated as such on the parts list.

Also provided are a parts list and accompanying exploded view for the Part No. 61-1003C Modular Pump Assembly used in the Model 8890 Vacuum Pump. Table 4-2 is the parts list, and Figure 4-2 is the exploded view of the modular pump assembly.

Table 4-1. Parts List for Model No. 8890 Vacuum Pump.

ITEM	PART NO.	DESCRIPTION	QUANTITY
1	61-2134A	Drain Plug	1
2	61-2158A	O-Ring, #110	1
3	61-1003C	Pump Assembly, Modular	1
4	-	Left Blank Intentionally	-
***	8817	Exhaust Filter	1
***	61-2228A	Cover, Oil Sight Glass Window (New S/N 1025 & Above)	1
***	61-2229A	Glass, Oil Sight Window (New S/N 1025 & Above)	1
***	61-2231	Tetraseal, Viton #127, Sight Glass (New S/N 1025 & Above)	1
***	61-2232	Screw, 8-32 x 1/2 Flat Head (New S/N 1025 & Above)	2
5	61-2132A	Plug, Filler	1
6	-	Left Blank Intentionally	-
7	61-2004B	Oil Case Assembly, with Sight Glass Window	1
8	61-1119B	Gasket, Oil Case	1
9	61-1180D	Mounting Plate Assembly	1
10	41-2693	Coupling Body	2
11	-	Left Blank Intentionally	-
12	61-2111C	Plate, Motor Adapter	1
13	61-2112A	Handle	1
14	2-01-6112	Screw, Socket Head, 1/4-20 x 3/4 in.	2
15	2-61-1165	Washer, SS, 1/4 in.	2
16	2-00-6712	Screw, Socket Head, 10-32 x 3/4 in.	8
17	61-2007C	Motor Assembly, 1/4 hp, 60 Hz	1
17	61-2025C	Motor Assembly, 1/4 hp, 50 Hz	1
18	2-00-6716	Screw, Socket Head, 10-32 x 1 in.	4
19	2-00-6812	Screw, Socket Head, 10-32 x 5/8 in.	4
20	41-2694	Coupling Spider	1
21	41-2962	Lip Seal, Fluoroelastomer	1
22	2-00-6708	Screw, Socket Head, 10-32 x 1/2 in.	3
23	61-2123A	Bumper, Rubber	4
24	61-2120C	Base	1
25	-	Left Blank Intentionally	-
26	61-2130A	O-Ring, #115	1
***	61-2221A	Nipple, Intake, 3/8 in. Hose Barb	1

27	-	Left Blank Intentionally	-
28	-	Left Blank Intentionally	-
29	61-2161A	Insert, Seat	1*
30	61-2162A	O-Ring, #015	1*
31	61-2139A	Disk, Isolation Valve, Fluoroelastomer	1*
32	61-2135A	Adapter, Isolation Valve	1*
33	61-2155A	O-Ring, #020	1
34	2-00-6410	Screw, Socket Head, #6-32 x 3/4 in.	2
35	61-2136A	Plunger	1*
36	61-2165A	Isolation Valve Assembly, 115 V	1*
37	4-21-5010	Dowel Pin, 3/16 in. Diam. x 5/8 in.	2
38	4-21-3006	Dowel Pin, 1/8 in. Diam. x 3/8 in.	2
39	-	Left Blank Intentionally	-
40	2-62-0793	Split Lock Washer, #10 (Not Shown)	12
41	61-1169A	Plug (Not Shown)	1**
42	61-2133A	Valve Assembly, Gas Ballast	1
43	41-3005	O-Ring, #008	1

* Used on Models with Isolation Valve, Cat. Nos. 8890A-55/8890L-55/8890A-85

** Used only on Model 8890A without isolation valve, in place of 61-2135A

*** Item not shown

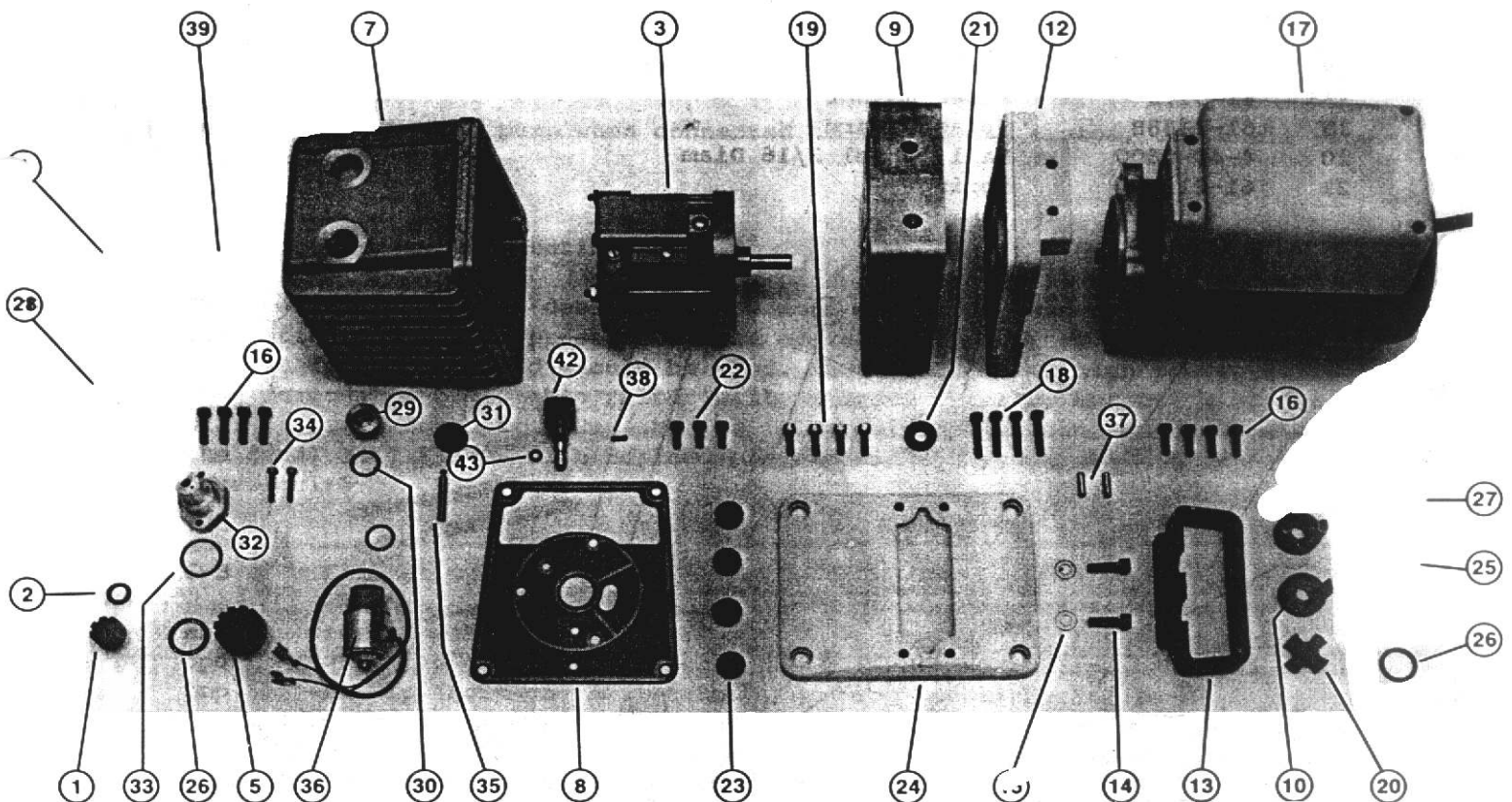


Figure 4-1. Exploded View for Model 8890 Vacuum Pump.

Table 4-2. Parts List for Part No. 61-1003C Modular Pump Assembly.

ITEM	PART NO.	DESCRIPTION	QUANTITY
1	61-1125B	Endplate	1
2	61-1120A	Thrust Disk	1
3	61-1104A	Exhaust Gerotor	1
4	61-2126A	Stud, Pump (Substitute 62-0001)	3
***	62-0001	Screw, Socket Head, 10-32 x 3 in.	3
5	2-40-5707	Nut, SS, #10-32 (Not required with 62-0001)	3
6	2-62-0793	Lock Washer, Split	3
7	4-21-3006	Dowel Pin, 1/8 in. Diam. x 3/8 in.	3
8	61-1130C	Housing, Gerotor	1
9	61-1102A	Intake Rotor Set	1
10	61-1124B	Rotor Pump Shaft	1
11	61-1121A	Key	2
12	61-1116B	Wear Plate	1
13	61-1123A	Bypass Valve	1
14	61-1128A	Backer Valve	2
15	2-10-1604	Screw, Binder Head, #8-32	4
16	2-68-5632	Washer, Flat, #8	3
17	61-1122A	Exhaust Valve	1
18	61-1178A	Orifice/Antisuckback Device	1
***	41-3175	Fiber Washer	1
19	61-1138B	Splash Guard	1
20	4-40-0600	Ball, steel 3/16 Diam	1
21	61-2164A	Spring	1

*** Item Not Shown

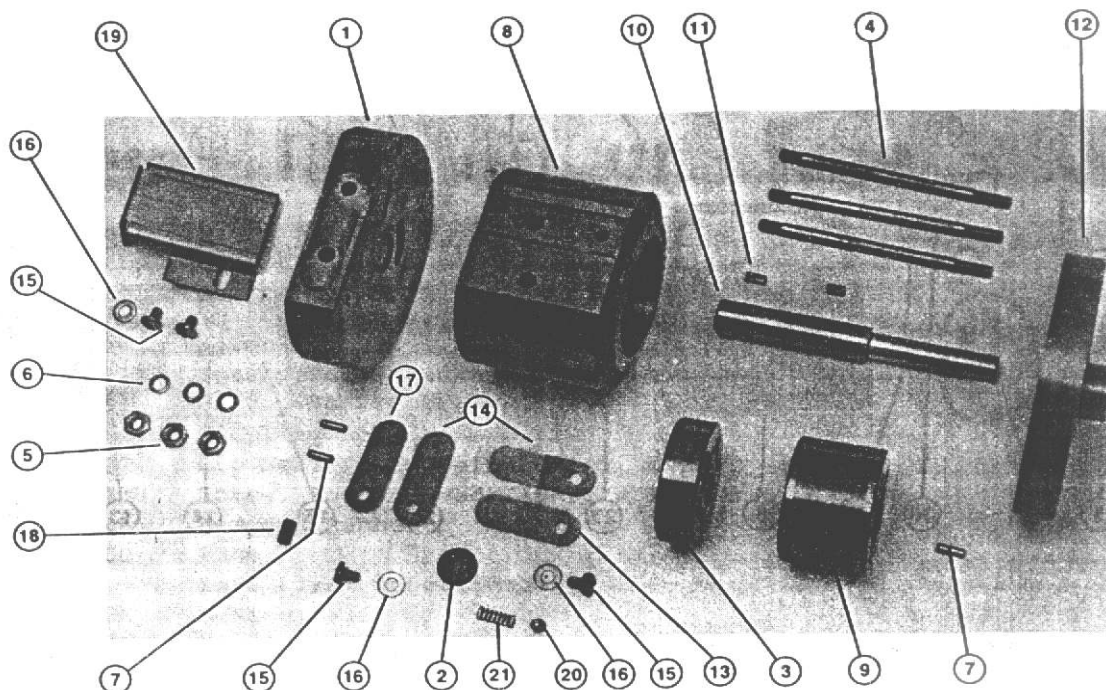


Figure 4-2. Exploded View for Part No. 61-1003C Modular Pump Assembly.