

FIG. - 12

MODEL 412-H MICROVAC PUMP

Recommended Replacement Parts Kit

For Model 412-H-11

The following replacement parts kit is recommended for your maintenance inventory to minimize downtime, assure availability of critical parts when maintenance is scheduled and assure you of proper "new equipment" replacement parts when and if emergencies occur.

Qty.	Part Number	Description
2	085-019-755	"O" Ring for End Caps
1	085-029-600	Rotary Oil Seal
4	243-926-002	Valve Plate Gasket
8	274-172-001	Valve Spring
8	272-963-002	Valve Clapper
1	269-037-001	Oil Separator Gasket
1	269-043-001	Housing Gasket
1	248-411-006	Cover Plate Gasket
2	085-024-138	Spring for Check Valve
2	085-024-135	"O" Ring Kit for Check Valve
1	085-034-530	Glass Dome and Gasket - Oil Flow Indicator

MODEL 900-412-11 MICROVAC PUMP

LOT NO. SCC-79924 TO

SYM.	QTY.	PART NO.	DESCRIPTION
1	1	F-408-867-4	Belt Guard Assembly
2	1	B-408-306-6	Bracket
3	1	B-408-306-5	Bracket
4	1+	C-268-783-5	Pulley W/Taper Lock Bushing 021-417
4A	1+	085-012-593	Motor Pulley, 4 Groves
4B	1*+	085-013-726	"V" Belt Matched Set of 4 I.N.D B-105
5	1+	C-262-315-5	End Cap - Drive End
6	1*+	085-019-755	"O" Ring, 4 7/8" ID X 5 1/8" OD X .139" Sect.
7	1*+	085-029-600	Rotary Oil Seal
8	2+	085-019-492	Lock Nut
9	2+	085-019-491	Lock Washer
11	2+	085-019-757	Ball Bearing
12	1+	A-262-508-20	Side Cover, Drive End
12A	1+	A-262-508-21	Side Cover, Dead End
13	2+	A-262-318-3	Shaft Shoulder Ring
14	1+	A-264-524-1	Woodruff Key, 3/8" X 1/2" X .375" Wide
15	2+	A-408-324-5	Key Eccentric
16	1+	D-262-992-5	Shaft
17	2+	C-243-595-11	Piston & Slide
18	4+	B-297-857-4	Hinge Bar
19	1+	C-252-459-1	Solid Eccentric
20	1+	A-268-788-1	Hinge Bar Spacer
21	6+	085-021-745	Nylock S.H. Cap Screw, 1/4" 20" X 1 1/4" Long
22	1+	C-264-785-2	Bearing Ring
23	1+	085-033-232	Roller Bearing
24	1+	A-270-231-1	Retaining Pin
	4*+	A-243-926-2	Valve Plate Gasket
26	4+	263-840-004	Valve Assembly Consists Of:
26A	4+	B-403-626-3	Valve Cap
26B	8*+	A-274-172-1	Spring
26C	8*+	A-272-963-2	Valve Clapper 304 SS
26D	4+	B-403-636-2	Valve Seat
27	1*+	B-269-037-1	Oil Separator Gasket
28	1+	D-269-256-5	Oil Separator
29	1*+	C-269-043-1	Housing Gasket
29A	1*+	085-038-301	Gasket Eliminator
30	1	F-299-66-24	Oil Reservoir (Welded)
31	1*+	B-248-411-6	Cover Plate Gasket

* RECOMMENDED SPARE PART (WEAR ITEMS)
+ PARTS NORMALLY STOCKED

MODEL 900-412-11 MICROVAC PUMP

LOT NO. SCC-79924 TO

SYM.	QTY.	PART NO.	DESCRIPTION
32	1	B-419-109-5	Cover Plate
33	1	085-036-101	Oil Level Indicator
34	2	085-035-996	Motor Bracket Pin
35	2	B-287-950-3	Swivel Block
36	1	C-288-202-5	Motor Platform
38	1	B-263-249-4	Eye Bolt Base
39	1+	B-263-250-7	Motor Support Eyebolt
41	1+	C-278-575-1	Hollow Eccentric
42	1*	085-019-755	"O" Ring, 4 7/8" ID X 5 1/8" OD X .139" Sect.
43	1	C-264-789-03	End Cap - Dead End
44	1+	F-262-712-25	Pump Housing

OIL LINE COMPONENTS

45	2	A-269-286-13	Tubing, 5/8" OD X 16 1/8" Long
46	1+	085-021-037	Flow Indicator
47	1	085-036-053	Brass Pipe, 1/2" NPT X 8 1/4" Long
48	1*+	085-035-837	Solenoid Valve 1/2" IPS 220/240V
48A	1*+	085-029-430	Solenoid Valve Coil 220/440V 50/60 CY.
48B	1*+	085-029-427	Sol. Valve Coil 550V, 60 CY,
48C	1*+	085-029-431	Sol. Valve Coil 110V 50/60 CY
49	2+	085-021-811	Ball Valve, 3/8" IPS
50	2+	085-021-965	Check Valve, 3/8 IPS
50A	2*+	085-024-138	Spring
50B	2*+	085-024-135	Dynamic "O" Ring
50C	2	085-024-136	Static "O" Ring
51	1	085-033-233	Brass Cock, 1/2" MPT
	2*+	254-539-002	Stokes V-Lube Pump Oil, Label F, 5 Gal. Can
	1*+	285-186-2	Stokes V-Lube Pump Oil, Label F, 2 Gal. Can
	1*+	085-034-530	Glass Dome & Neo., Gasket
	2+	085-025-325	Expansion Plug, 2 1/2" Dia. X .083" Thk.
	8+	085-021-873	Expansion Plug, 1 7/8" Dia. X .083" Thk.

REFERENCE DRAWINGS

A-O-261-A

Parts Drawing

* RECOMMENDED SPARE PART (WEAR ITEMS)

+ PARTS NORMALLY STOCKED

Revision 1.4 4-11-95 EC-35534

RJL:rfe

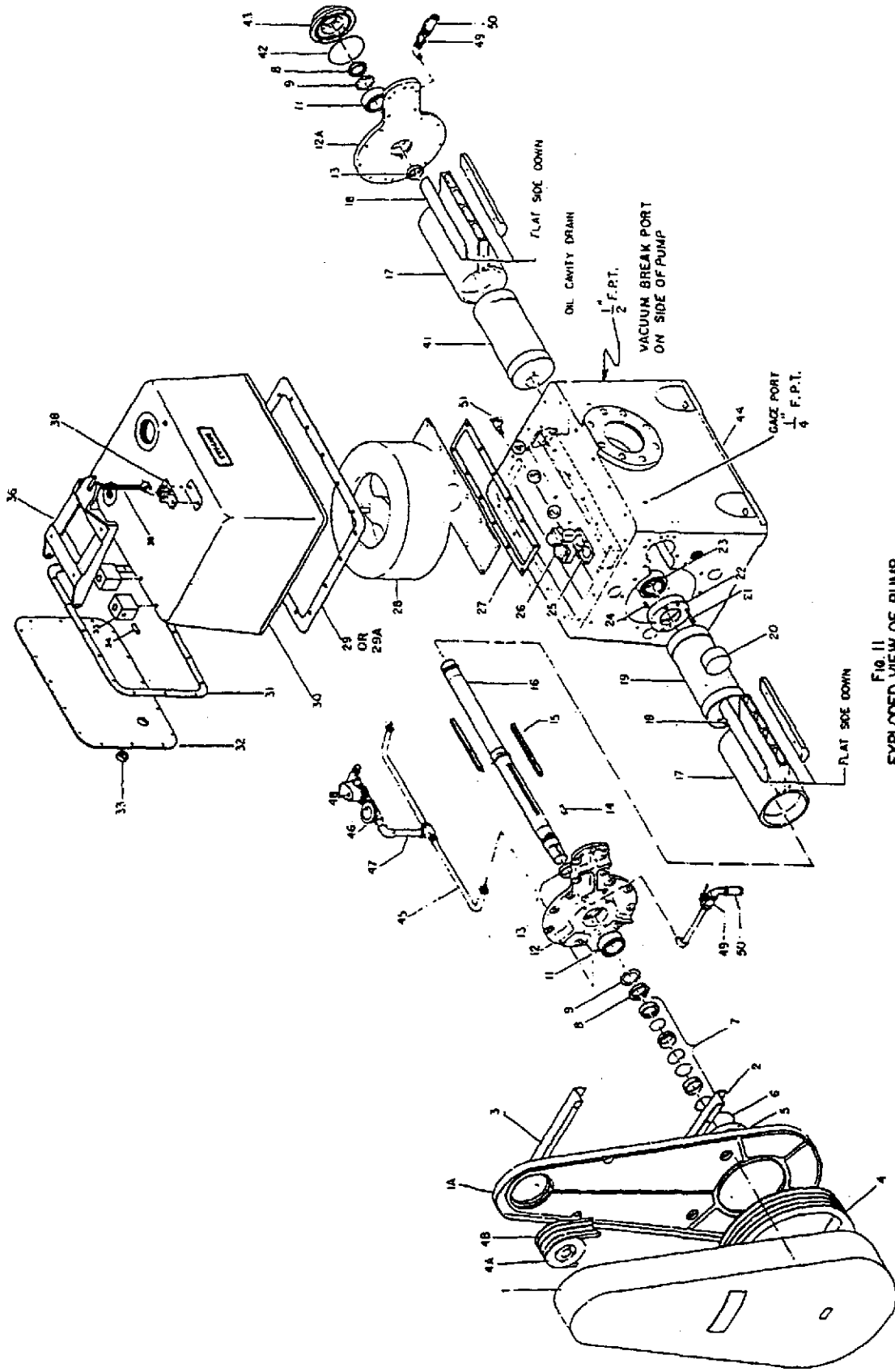


FIG. 11
EXPLODED VIEW OF PUMP

MODEL 412-11 MICROVAC PUMP

AO-261-A