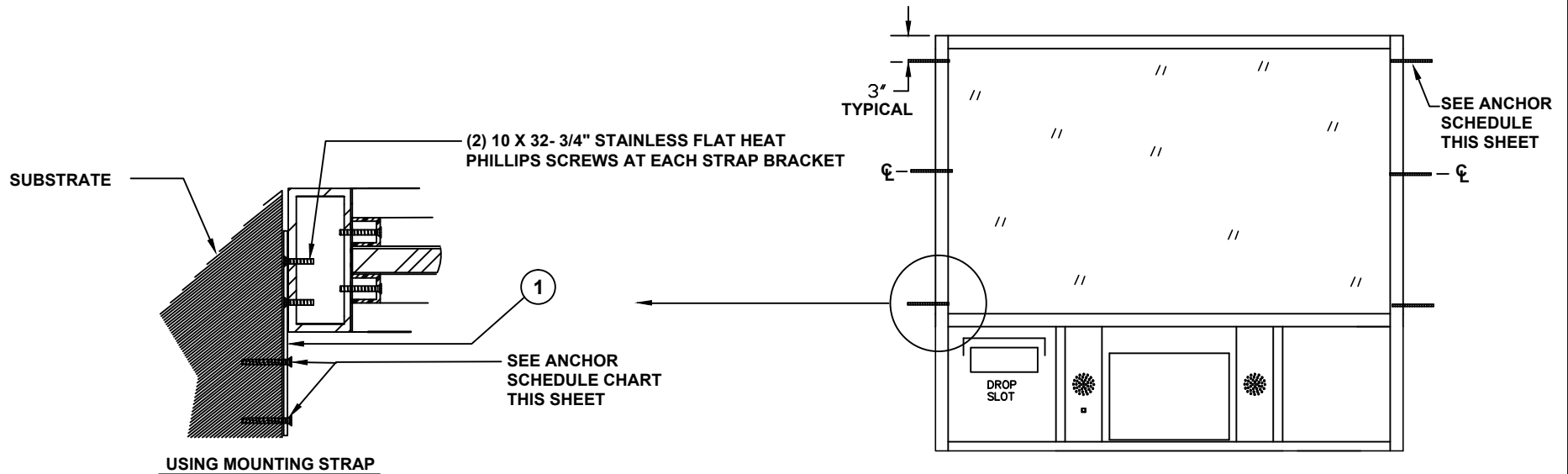




**COVENANT**  
Security Equipment

# CSE Combo Window/Drawer INSTALLATION ANCHOR SCHEDULE

CSE-QS-TS Series: 619S, 713S, 12S, 625S and 1019S



ANCHOR SCHEDULE		
SUBSTRATE	ANCHOR	MINIUM PENETRATION INTO SUBSTRATE
STEEL (16 GA. MIN.)	1/4" SHEET METAL SCREWS	MIN. PROTRUSION OF 3 THREADS BEYOND FULL ENGAGEMENT
CONCRETE	1/4" DIAMETER CONCRETE SCREW	1.25" INTO CONCRETE
WOOD BUCK	# 14 WOOD SCREW	1.50" INTO WOOD (REQUIRES DOUBLE 2X BUCK)

1. Please check all local city codes prior to installation.
2. Check Rough Opening Requirements on Approved Drawings
3. Window must be installed level & square to work properly.
4. Anchor through each side of jamb through pre-drilled holes.
5. Recommended Height from floor to bottom of the window is 28".
6. All other anchor types to be approved by certified engineer.

ANCHOR SCHEDULE			
Aluminum Commercial Pass-Thru Window			
DRAWING DATE: 01-25-2010	SIZE FSCM NO.	DWG. NO. PCJ-130	REV 1
DRAWN BY: BRIAN C. MM	NO SCALE	SHEET: 1 of 1	