

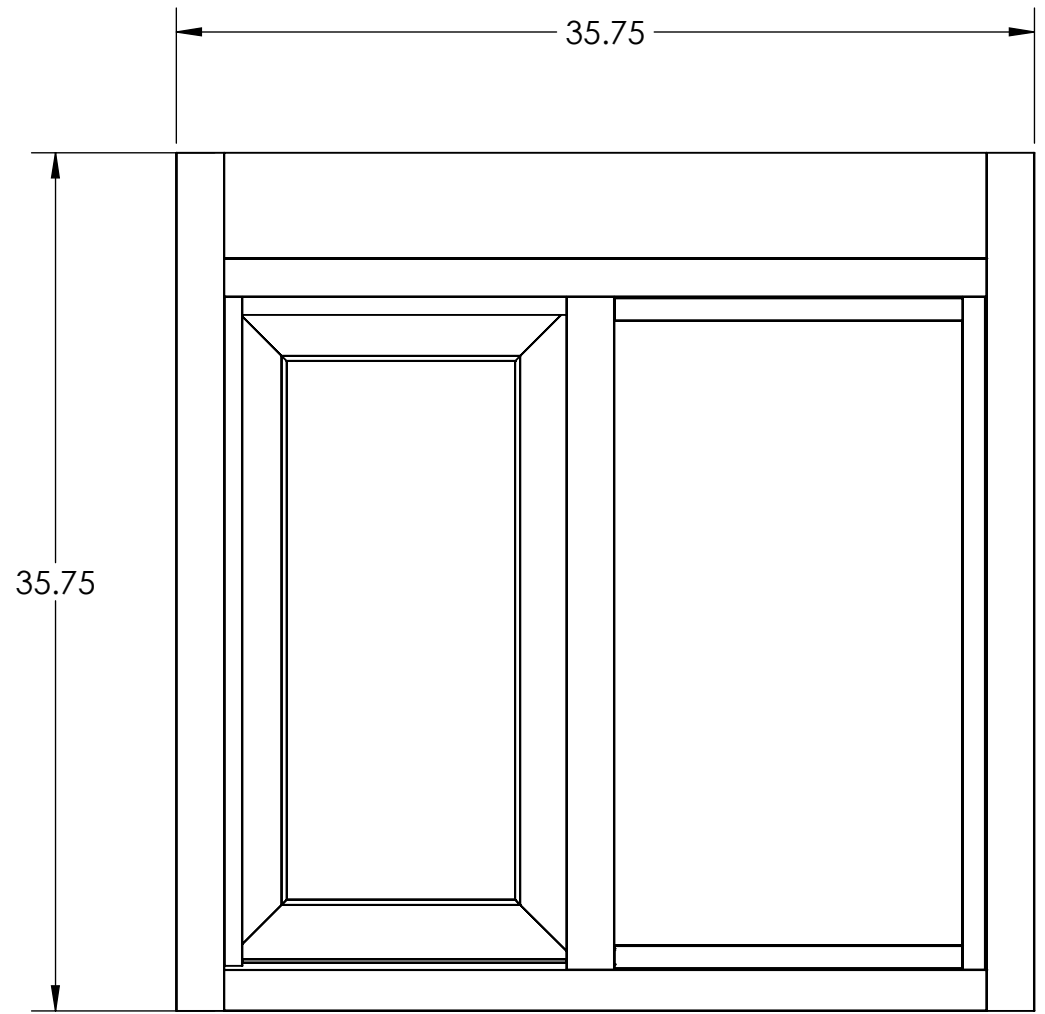
4

3

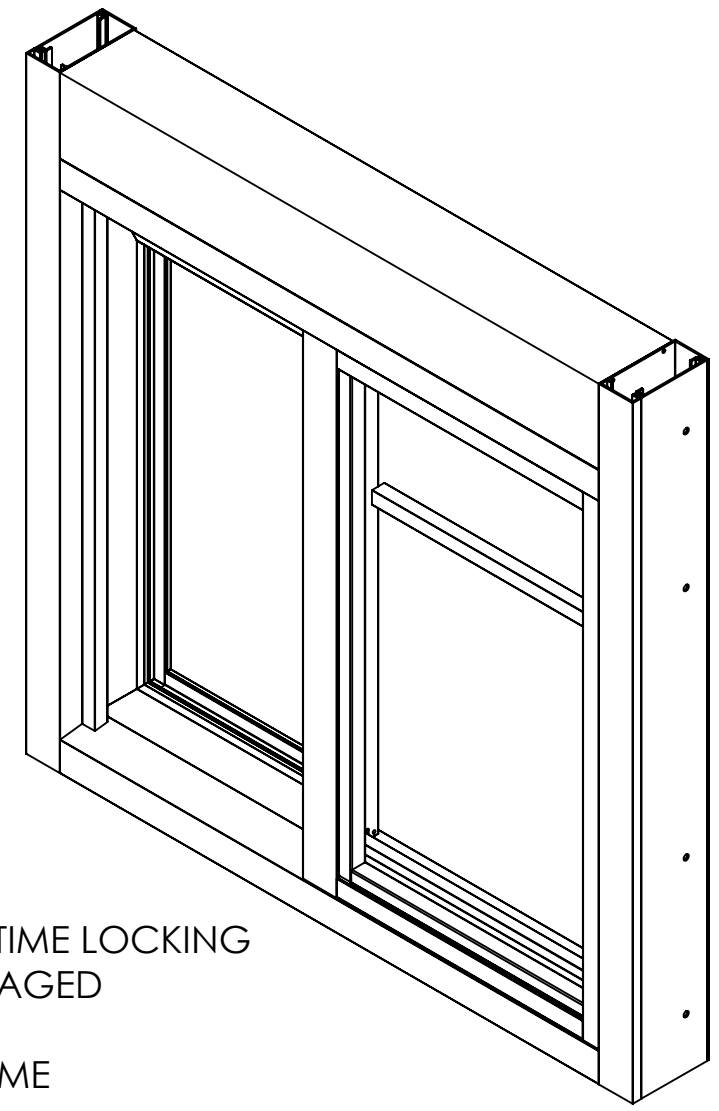
2

1

Powder Coat option  
 RAL #: \_\_\_\_\_  
*Powder coated windows are not returnable*



*MODEL 275*  
*L/R DIRECTION FROM OUTSIDE VIEW*  
*OPERATION: MANUAL OPEN / SELF-CLOSE*  
*1/4" Clear Tempered Glass*



VIEW WITH NIGHT TIME LOCKING  
 BAR ENGAGED  
 4" FRAME

B

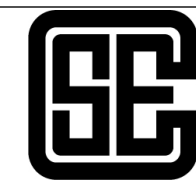
B

A

A

WORK TO DIMENSIONS- DO NOT SCALE  
 TOL. UNLESS SPECIFIED  
 XXXX TOL. NOT REQD  
 TOL. CLASS ± .063  
 ANGULAR TOL. ± 1°

USED IN PRODUCTS:	DESIGN BY: BCG	MATERIAL: ALUMINUM
	DATE: 11/7/23	MATERIAL SPEC: 6063-T6
REVISION: A	DRAWN BY: KMS	GAUGE: .063
REVISION DATE:	DATE: 11/7/23	



**COVENANT**  
 Security Equipment

LATEST REVISION NOTE:  
 REV = A RELEASE FOR CUSTOMER APPROVAL

DESCRIPTION: 35.75"W X 35.75"H FRAME SIZE  
 13.5"W x 27.25"H SERVICE OPENING  
 PART NO.: 6510822(1-2-3) depending on frame color

4

3

2

1