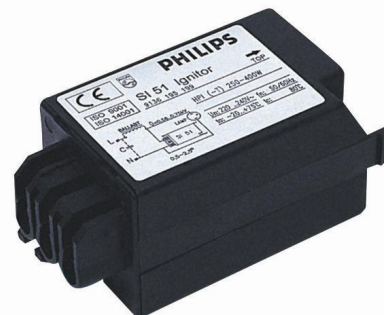


PHILIPS

Lighting



Electronic parallel ignitor for HID lamp circuits

SI 51 Plus

HID ignitors for parallel systems

Product data

General Information

Application Code 51 Plus

Operating and Electrical

Input Voltage 220 to 240 V

Input Frequency 50 to 60 Hz

Igniton Type Parallel

Ignition Voltage (Max) 0.75 kV

Ignition Voltage (Min) 0.58 kV

Response Voltage 190 V

Mains Voltage Performance (AC) -8% - +6%

Mains Voltage Safety (AC) -10% - +10%

Power Losses (Nom) 0.5 W

Wiring

Ballast Contact Wire Cross Section 0.50-2.50 mm²

Connector Type Screw

Temperature

T-Ambient (Max) 75 °C

T-Ambient (Min) -20 °C

T-Case Maximum (Max) 80 °C

Mechanical and Housing

Housing Akulon S223

Approval and Application

Approval Marks CE marking ENEC certificate

Product Data

Full product code 871016305621030

Order product name SI 51 Plus

EAN/UPC - Product 8710163056210

Order code 913710011114

Numerator - Quantity Per Pack 1

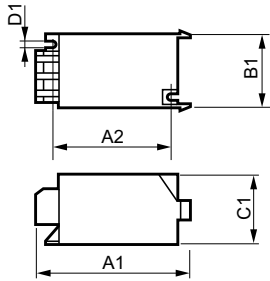
Numerator - Packs per outer box 48

Material Nr. (12NC) 913710011114

Net Weight (Piece) 75.000 g

Electronic parallel ignitor for HID lamp circuits

Dimensional drawing



Product	C1	A1	A2	B1	D1
SI 51 Plus	38.5 mm	85.5 mm	65.0 mm	41.5 mm	4.3 mm

SI 51 Plus

