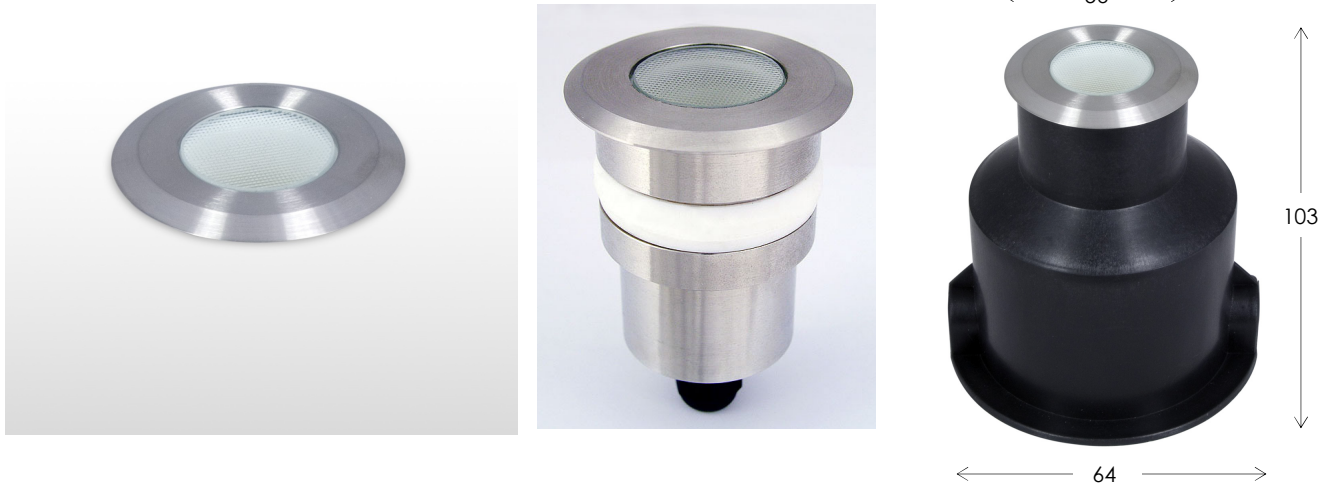


## INGROUND / UNDERWATER LED LIGHT



### Model: HIG 8320 SS316

Eco-friendly LED technology along with energy savings and free of maintenance.

#### Application

Decorative or guide lighting in halls, foyers, corridor, hallway, garden, park and commercial applications. Stainless steel 316 body and top plate will not corrode in any outdoor location.

#### Construction

Stainless steel 316 body with PP recessed housing. Hardened frosted or clear glass cover.

#### Beam angle

Standard wide beam with frosted glass cover.  
On request beam angles of 15, 25 and 35 deg. With clear cover.

#### Lamp

1 x 1.2W TS Osram GP LED, 350mA  
1 x 2W Philips Rebel Es, 500mA  
1 x 3W Philips Rebel Es, 700mA

#### Color

2700K or 3000K

Driver: Order separately. Remote mounted in dry area.  
Connection one driver to one light or one driver to up to 6 to 12 lights *in series connection*.

