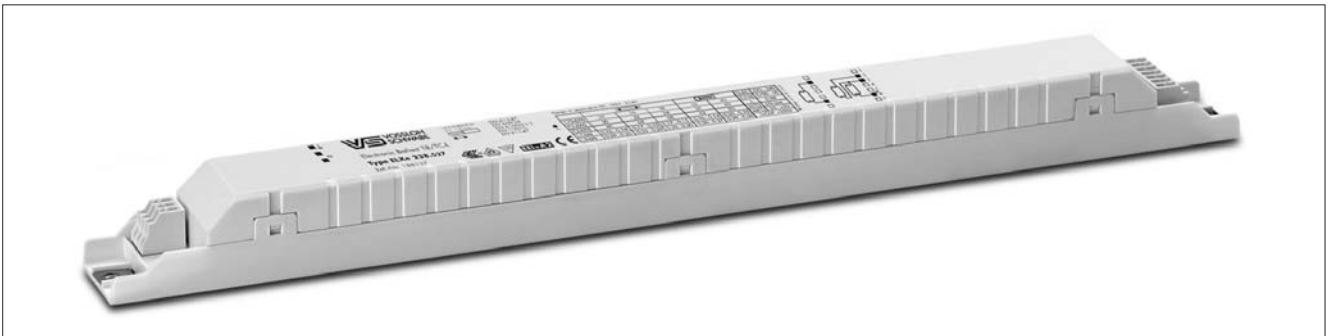
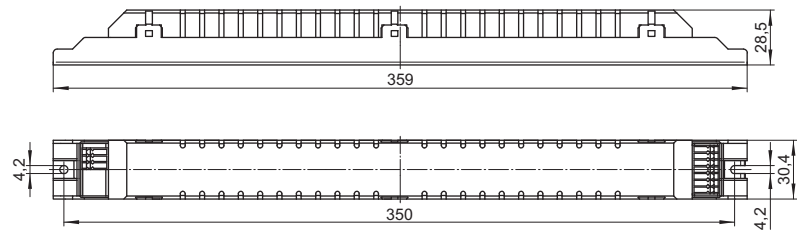


ELXe – Instant Start for T8 Lamps

Electronic built-in ballasts
 Casing: heat-resistant polycarbonate (K9)
 Power factor: 0.95
 DC voltage operation: 198–254 V
 Push-in terminals: 0.5–1.5 mm²
 IDC terminals 0.5–0.75 mm²
 For the automatic luminaire wiring:
 IDC terminals for leads H05V-U 0.5
 RFI-suppressed
 For luminaires of protection class I and II
 Degree of protection: IP20
 For lighting systems with
 low switching frequency (< 5/day)
 Suitable for built-in in luminaires
 acc. to EN 60079-15

K9



Lamp				Electronic ballast							System	
Output W	Type	Base	Power consumption W	Type	Ref. No.	Voltage AC 50, 60 Hz V±10 %	EEL	Ambient temperature t _a [°C]	Casing temperature t _c [°C]	Casing	Output W	Luminous factor %
18	T8	G13	1 x 16.0	ELXe 218.551	188796	220–240	A2	–20 to 55	max. 65	K9	18.0	98.1
2x18	T8	G13	2 x 16.0	ELXe 218.551	188796	220–240	A2	–20 to 55	max. 65	K9	35.5	98.4
30	T8	G13	1 x 28.0	ELXe 238.552	188797	220–240	A2	–20 to 55	max. 70	K9	30.5	117.3
2x30	T8	G13	2 x 27.5	ELXe 238.552	188797	220–240	A2	–20 to 55	max. 70	K9	59.5	117.0
36	T8	G13	1 x 32.0	ELXe 238.552	188797	220–240	A2	–20 to 55	max. 70	K9	35.0	100.1
	TC-L	2G11	1 x 28.0	ELXe 238.552	188797	220–240	A2	–20 to 55	max. 70	K9	30.5	93.3
2x36	T8	G13	2 x 31.0	ELXe 238.552	188797	220–240	A2	–20 to 55	max. 70	K9	67.5	99.7
	TC-L	2G11	2 x 28.0	ELXe 238.552	188797	220–240	A2	–20 to 55	max. 70	K9	60.5	94.0
38	T8	G13	1 x 32.0	ELXe 238.552	188797	220–240	A2	–20 to 55	max. 70	K9	35.0	102.5
2x38	T8	G13	2 x 31.5	ELXe 238.552	188797	220–240	A2	–20 to 55	max. 70	K9	68.0	102.0
40	TC-L	2G11	1 x 37.0	ELXe 238.552	188797	220–240	A2	–20 to 55	max. 70	K9	40.5	98.1
2x40	TC-L	2G11	2 x 37.0	ELXe 238.552	188797	220–240	A2	–20 to 55	max. 70	K9	79.5	97.4
55	TC-L	2G11	1 x 48.0	ELXe 258.553	188798	220–240	A2	–20 to 55	max. 75	K9	52.5	93.9
2x55	TC-L	2G11	2 x 47.0	ELXe 258.553	188798	220–240	A2	–20 to 55	max. 75	K9	101.5	91.8
58	T8	G13	1 x 52.0	ELXe 258.553	188798	220–240	A2	–20 to 55	max. 75	K9	57.0	101.7
2x58	T8	G13	2 x 52.0	ELXe 258.553	188798	220–240	A2	–20 to 55	max. 75	K9	112.0	100.0