

Starter Holders, Accessories

For starters acc. to DIN VDE 0712 part 101, IEC 60155

Starter holders with central studs, suitable for luminaires of protection class II, are available on request.

Starter holder

Material: PC, white

T110, nominal rating: 2/250

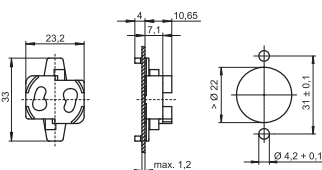
Push-in terminals: 0.5–1 mm²

Rear split pins for wall thickness up to 1.2 mm

Weight: 2.1 g, unit: 1000 pcs.

Type: 02113

Ref. No.: 535131



Starter holder

Material: PC, white

T110, nominal rating: 2/250

Push-in terminals: 0.5–1 mm², single-core

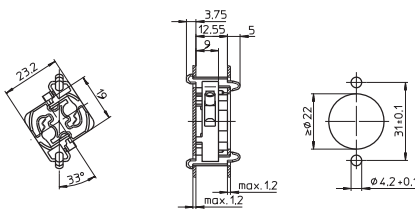
Front and rear split pins for wall thickness up to 1.2 mm

Rear of starter holder/luminaire: IP40

Weight: 2.8 g, unit: 1000 pcs.

Type: 02110

Ref. No.: 109784



Starter holder

Material: PC, white

T110, nominal rating: 2/250

Push-in terminals: 0.5–1 mm²

Rear split pins for wall thickness up to 1.2 mm

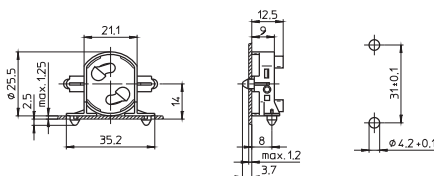
Lateral split pins for wall thickness up to 1.25 mm

Rear of starter holder/luminaire: IP40

Weight: 3.7 g, unit: 1000 pcs.

Type: 02120

Ref. No.: 100064



Starter holder

Material: PC, white

T110, nominal rating: 2/250

Push-in terminals: 0.5–1 mm²

Fixing holes for screws M3

Weight: 3.8 g, unit: 1000 pcs.

Type: 02150

Ref. No.: 100069

