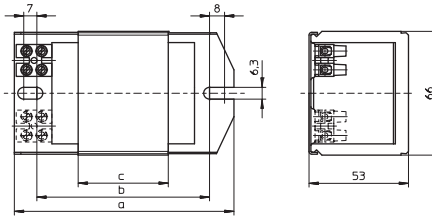
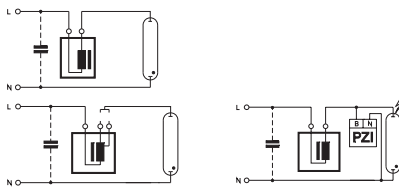
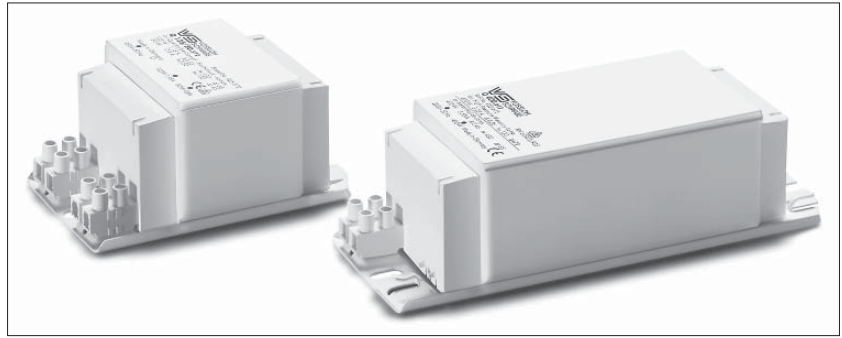


## Ballasts for HM and HI Lamps 50 to 400 W

Shape: 53x66 mm

For mercury vapour lamps (HM) and metal halide lamps (HI) with ignition voltage 1 kV  
 Vacuum-impregnated with polyester resin  
 Screw terminals: 0.5–2.5 mm<sup>2</sup>  
 Protection class I  
 tw 130



Lamp			Ballast										Capacitor	
Output W	Type	Current A	Type	Ref. No.	Voltage AC V, Hz	a mm	b mm	c mm	Weight kg	Δt K	Power factor λ	Energy efficiency	Cp μF	IN A
50	HM	0.61	Q 50.501	<b>167100</b>	220, 50	108	86	36	1.07	55	0.44	EEl=A3	7	0.28
			Q 50.550*	<b>167213</b>	230, 50	108	86	36	1.07	55	0.44	EEl=A3	7	0.27
			Q 50.508	<b>167125</b>	240, 50	108	86	36	1.07	65	0.42	EEl=A3	7	0.26
			Q 50.535	<b>167185</b>	220, 60	108	86	36	1.07	50	0.44	EEl=A3	6	0.28
50	HM	0.61	Q 80/50.596*	<b>167311</b>	230, 50	108	86	36	1.07	55	0.43	EEl=A3	7	0.27
80	HM	0.80								70	0.51	EEl=A3	8	0.41
50	HM	0.61	Q 80/50.592	<b>167306</b>	220, 60	108	86	36	1.07	50	0.44	EEl=A3	6	0.28
80	HM	0.80								60	0.53	EEl=A3	7	0.43
80	HM	0.80	Q 80.587	<b>167302</b>	220, 50	108	86	36	1.07	65	0.52	EEl=A3	8	0.43
			Q 80.588*	<b>167304</b>	230, 50	108	86	36	1.07	70	0.51	EEl=A3	8	0.41
			Q 80.510	<b>167132</b>	240, 50	108	86	36	1.07	60	0.48	EEl=A3	8	0.40
			Q 80.584	<b>167299</b>	220, 60	108	86	36	1.07	55	0.51	EEl=A3	7	0.43
80	HM	0.80	Q 125/80.611*	<b>167326</b>	230, 50	108	86	42	1.23	50	0.49	EEl=A3	8	0.41
125	HM	1.15								70	0.54	EEl=A3	10	0.60
80	HM	0.80	Q 125/80.511	<b>167136</b>	240, 50	108	86	48	1.39	50	0.48	EEl=A3	8	0.40
125	HM	1.15								70	0.52	EEl=A3	10	0.58
125	HM	1.15	Q 125.549	<b>169947</b>	220, 50	108	86	36	1.07	70	0.56	EEl=A3	10	0.63
			Q 125.568*	<b>167263</b>	230, 50	108	86	36	1.07	75	0.54	EEl=A3	10	0.60
			Q 125.512	<b>167140</b>	240, 50	108	86	48	1.39	65	0.51	EEl=A3	10	0.58
			Q 125.598	<b>502818</b>	220, 60	108	86	36	1.07	60	0.57	EEl=A3	10	0.65
250	HM	2.13	Q 250.513	<b>167144**</b>	220, 50	145	120	75	2.10	75	0.58	<b>A2</b>	18	1.26
			Q 250.528	<b>167367**</b>	230, 50	145	120	75	2.10	75	0.56	<b>A2</b>	18	1.20
			Q 250.703	<b>507256**</b>	240, 50	145	120	75	2.10	75	0.53	<b>A2</b>	18	1.15
			Q 250.606	<b>533705**</b>	220, 60	145	120	64	1.80	70	0.58	<b>A2</b>	15	1.30
400	HM	3.25	Q 400.616	<b>528236**</b>	220, 50	160	135	95	2.50	80	0.60	EEl=A3	25	2.00
			Q 400.561	<b>167250**</b>	220, 50	180	155	110	2.88	75	0.60	<b>A2</b>	25	2.00
			Q 400.612	<b>167330**</b>	230, 50	180	155	110	2.88	75	0.56	<b>A2</b>	25	1.90
			Q 400.669	<b>167374**</b>	240, 50	180	155	110	2.88	75	0.54	<b>A2</b>	25	1.85
			Q 400.613	<b>167335**</b>	220, 60	180	155	110	2.88	65	0.60	<b>A2</b>	25	2.00
			Q 400.613	<b>508245**</b>	220, 60	180	155	95	2.50	75	0.60	<b>A2</b>	25	2.00

\* Ballasts without CE marking for replacements or markets outside of the EU

\*\* Suitable for metal halide lamps (HI) with ignition voltage 1 kV in combination with pulse ignitor PZI 1000/1 K (see page 52)