

Specification Sheet

EcoSet Basic Control OccuSwitch 2-in-1 mounting PIR sensor

EcoSet SES LCM1060, LCM1061

The EcoSet OccuSwitch is a movement detector with a build-in switch. It will switch off the lights in a room or area when it is vacated, and its single target is to achieve incremental energy saving in a simple, reliable and affordable way. The OccuSwitch can control an office area up to 28m². It is designed with 2-in-1 mounting method, which can support both surfaced and recessed mounting.

EcoSet SES LCM1060, LCM1061

Functions

Automatic control

The Occuswitch sensor switches the lights on automatically when presence is detected and switches the lights off after the area is vacated (after 2/5/15/30 minutes depending on the settings).

Daylight override

It is possible to prevent the automatic switch-on when sufficient daylight is available in order to create additional savings.

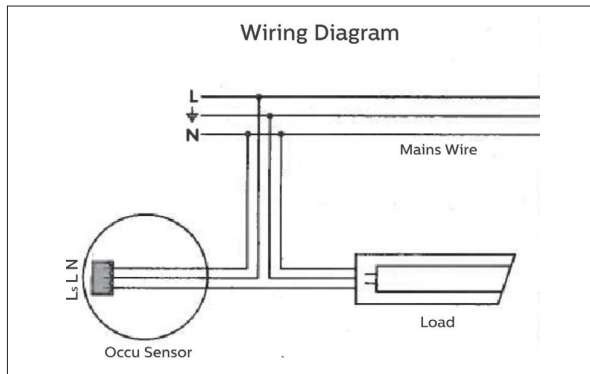
Fixing

The OccuSwitch 2-in-1 mounting PIR sensor is suitable for both surfaced mounting and recessed mounting.

When selecting a location for the OccuSwitch, avoid obvious cold spots so that condensation does not occur.

Electrical installation

The OccuSwitch 2-in-1 mounting PIR sensor can be installed with the conventional wiring as shown in the diagram.



Installation (conventional wiring)

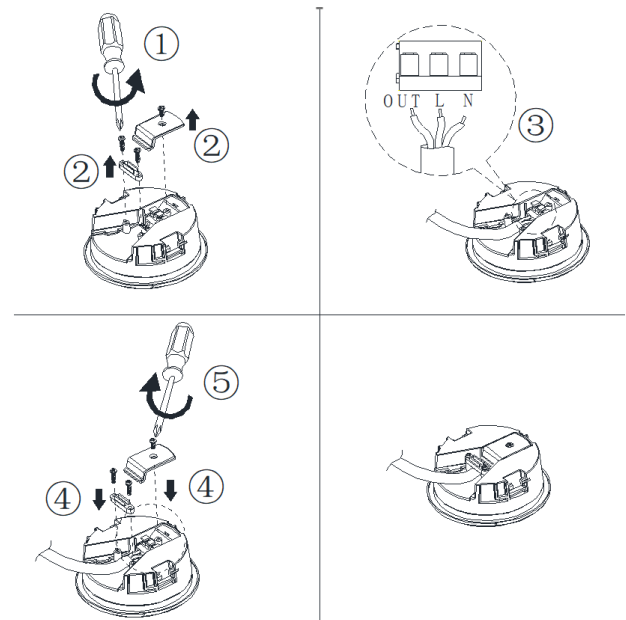
Features

Smart timer

The smart timer will extend the delay time by the set delay time (2/5/15/30mins) if movement is detected shortly after switch-off, assuming that the area is still in use, but very little movement is made.

Applications

The OccuSwitch is designed for use in offices and similar applications, including conference rooms, toilets, storage and break areas, etc. It is optimized for both surface and recessed ceiling mounting and for mounting heights between 2.5 and 4 meter.



Installation (cable wiring)

EcoSet SES LCM1060, LCM1061

Daylight control

Daylight override

The daylight override function prevents the lights from switching on when sufficient daylight is available. To enable this function it is necessary to set the required light level by turn the dial away from the 'L' position. To disable this function, turn the dial into the 'L' position.

Warnings

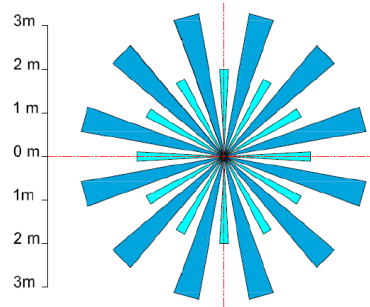
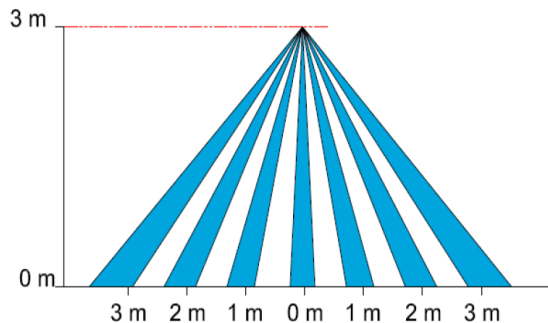


The Occuswitch should not be used in the following situations:

- Environmental conditions other than in a normal of fierce environment (temperature, humidity).
- In applications with heat sources like electrical heaters, within the detection range of the Occuswitch.
- In combination with lighting sources, or other devices, that can be damaged if they are switched off and on in a short period of time.
- It should not be mounted in direct line of air flow like in front of Air Conditioning vent.

Detection range diagram

*Testing @ 3m installation height @25°C



Technical data

Environmental conditions

Storage conditions

Temperature -25 to +85°C
Relative humidity 0% to 95%; no condensation

Operating conditions

Temperature -20 to +55°C
Relative humidity 0 to 95%; no condensation

Mains connection Voltage 220-240VAC; 50/60Hz (for LCM1060 only)
100-277VAC; 50/60Hz (for LCM1061 only)

Mains surge immunity 1kV/2kV (for LCM1060 only);
4kV/4kV (for LCM1061 only)

Power consumption

Stand-by <1W

Maximum load 4 A (Resistive load)

Load peak inrush current <110A

Applicable wire range 0.75 to 1.5mm²

Switch off delay 2 (default)/5/15/30minutes

Light levels Disable/10/30/100lux

Detection range See diagram

Angel blocker Available

Certification

CE (for LCM1060 only)

Protection Class IP20

Lifetime 50,000 hrs

Packing data

| Type | Box dimensions (mm) | Qty | Material | Weight (Kg) | |
|-----------------------|------------------------|-----|-----------|-------------|-------|
| | | | | net | gross |
| SES LCM1060 Unit box | 105 x 75 x 105 | 1 | Cardboard | 0.14 | 0.19 |
| SES LCM1060 Outer box | 390 x 220 x 122 | 10 | Cardboard | 1.37 | 6.34 |
| SES LCM1061 Unit box | 105 x 75 x 105 | 1 | Cardboard | 0.14 | 0.18 |
| SES LCM1061 Outer box | 550 x 400 x 450 | 100 | Cardboard | 14.30 | 19.27 |

Ordering Data

| Type Ordering | QTY | Ordering number |
|------------------------|---------------------------|-----------------|
| SES LCM1060 Occ PIR WH | In Multiples of Outer Box | 9114 0514 2702 |
| SES LCM1061 Occ PIR WH | In Multiples of Outer Box | 9114 0514 2802 |

© 2019 Signify Holding. All rights reserved. Specifications are subject to change without notice. No representation or warranty as to the accuracy or completeness of the information included herein is given and any liability for any action in reliance thereon is disclaimed. Philips and the Philips Shield Emblem are registered trademarks of Koninklijke Philips N.V. All other trademarks are owned by Signify Holding or their respective owners.



www.philips.com/lighting

25 January 2019