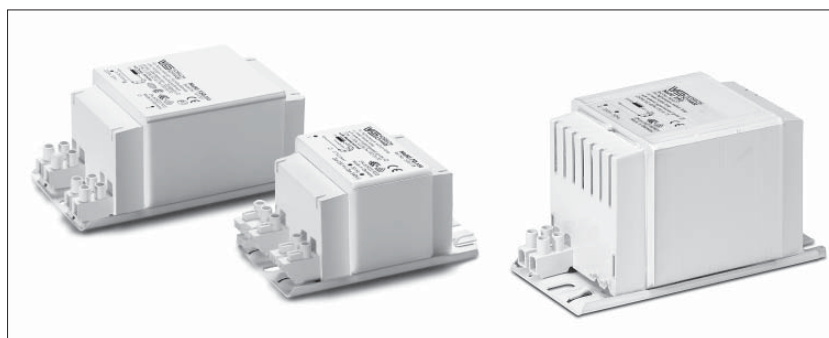
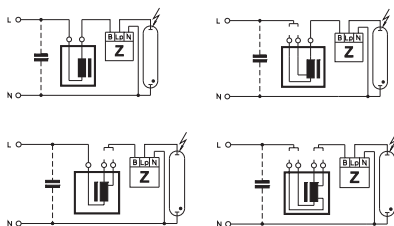


Ballasts with Thermal Cut-out for HS and HI Lamps 35 to 150 W

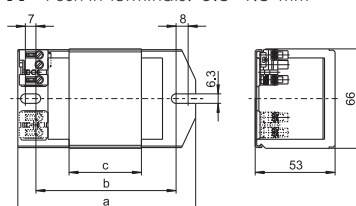
Shape: 53x66 mm

For high pressure sodium lamps (HS), metal halide lamps (HI) and ceramic discharge lamps (C-HI)
 Vacuum-impregnated with polyester resin
 With VS-patented, intelligent temperature switch with automatic reset (evaluates the temperature and current of the ballast)
 Protection class I
 tw 130

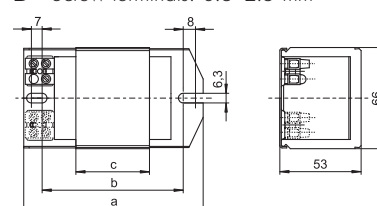
Ballasts for pulse ignition system on request



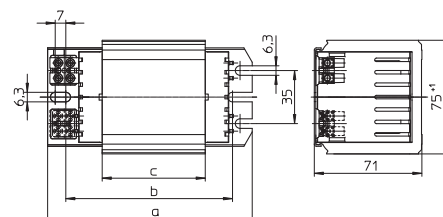
A Push-in terminals: 0.5–1.5 mm²



B Screw terminals: 0.5–2.5 mm²



C Screw terminals: 0.75–2.5 mm²



Lamp			Ballast											Capacitor	
Output W	Type	Current A	Type	Ref. No.	Voltage AC V, Hz	Drawing	a mm	b mm	c mm	Weight kg	Δt K	Power factor (λ)	Energy efficiency	C _P μF	I _N A
Push-in terminals: 0.5–1.5 mm²															
35	HS, HI	0.53	NaHJ 35.209	543737	230/240, 50	A	108	86	36	1.07	35	0.36	A2	6	0.22
			NaHJ 35.485*	506122	230/240, 50	A	108	86	36	1.07	60	0.40	EEI=A3	6	0.22/0.21
			NaHJ 35.638	509170	220, 60	A	108	86	36	1.07	50	0.41	EEI=A3	5	0.23
50	HS, HI	0.76	NaH 50.206	543738	230, 50	A	108	86	48	1.39	45	0.35	A2	8	0.30
50	HS, HI	0.76	NaHJ 70/50.157*	507341	230, 50	A	108	86	42	1.23	55	0.37	EEI=A3	8	0.30
											70	0.37	EEI=A3	12	0.38
50	HS, HI	0.76	NaHJ 70/50.520*	538361	230, 50	A	117	92	48	1.39	45	0.36	EEI=A3	8	0.30
											55	0.36	EEI=A3	12	0.38
70	HS, HI	0.98	NaHJ 70.128*	535191	230, 50	A	108	86	36	1.07	70	0.36	EEI=A3	12	0.38
			NaHJ 70.226	543741	230, 50	A	108	86	48	1.39	50	0.37	A2	12	0.38
			NaHJ 70.128*	533572	230/240, 50	A	108	86	36	1.07	70/75	0.36	EEI=A3	12	0.38/0.37
			NaHJ 70.653	509169	220, 60	A	108	86	36	1.07	60	0.42	EEI=A3	10	0.40
70	HS, HI	0.98	NaHJ 100/70.703*	507342	230, 50	A	145	120	48	1.39	60	0.37	EEI=A3	12	0.38
100	HS, HI	1.20									70	0.43	EEI=A3	12	0.55
100	HS, HI	1.20	NaHJ 100.670*	506120	230/240, 50	A	117	92	48	1.39	70	0.42	EEI=A3	12	0.55/0.53
			NaHJ 100.941*	539492	230/240, 50	A	108	86	42	1.23	75/80	0.42	EEI=A3	12	0.55/0.53
100	HS, HI	1.20	NaHJ 150/100.973*	507343	230, 50	A	145	120	75	2.02	55	0.41	A2	12	0.55
150	HS, HI	1.80									75	0.41	EEI=A3	20	0.57
150	HS, HI	1.80	NaHJ 150.620*	535216	230, 50	A	145	120	64	1.80	70	0.40	EEI=A3	20	0.77
			NaHJ 150.620*	538543	230/240, 50	A	145	120	64	1.80	70/75	0.40	EEI=A3	20	0.77/0.74
			NaHJ 150.355*	509100	230/240, 50	A	145	120	75	2.02	65	0.39	EEI=A3	20	0.77/0.74
			NaHJ 150.679	509171	220, 60	A	145	120	75	2.02	65	0.42	EEI=A3	16	0.80

* Ballasts without CE marking for replacements or markets outside of the EU