



Designer Dian has been mastering the artistry of woodworking for years. He's always had an appreciation towards the organic nature the material exhibits. In the MUMU pendant, he utilizes the coolness of metal married with an LED light source, and counter-balances this with the warmth of the wood on both ends of the pendant. The MUMU is available in two versions: Matt White with Beech and Matt Black with Walnut.

By Kuo, Keng Dian 郭庚典

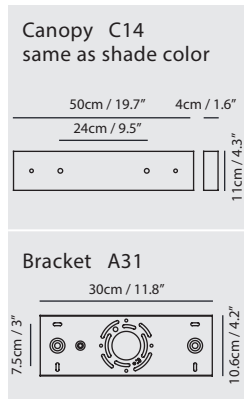
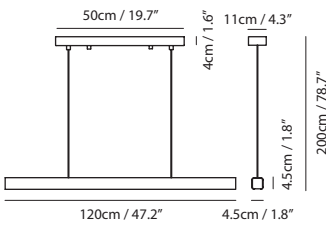




matt black + walnut (wood cap)



matt white + beech (wood cap)



Mumu Pendant



Model
SLD-3981P

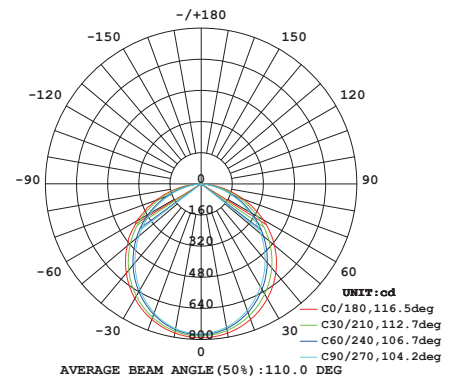
Material
aluminum, wood

Light Source
LED 32W 3000K CRI90 2150lm

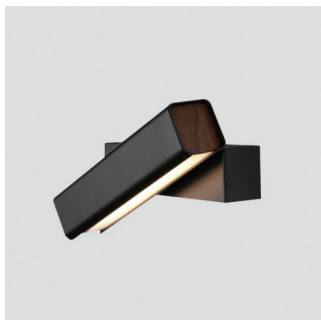
Driver
Built-in dimmable driver
(Triac dimming)

Weight
2.9kg / 6.4lb

- Color**
-  matt black + walnut (wood cap)
 -  matt white + beech (wood cap)



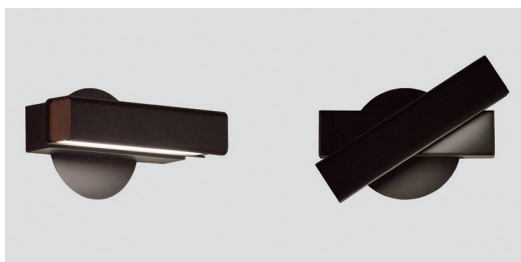




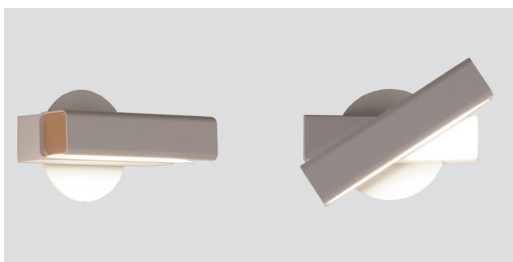
matt black + walnut (wood cap)



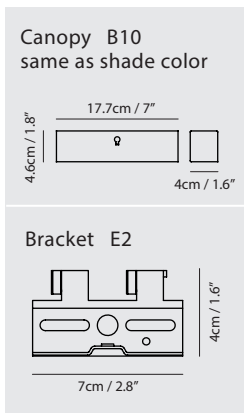
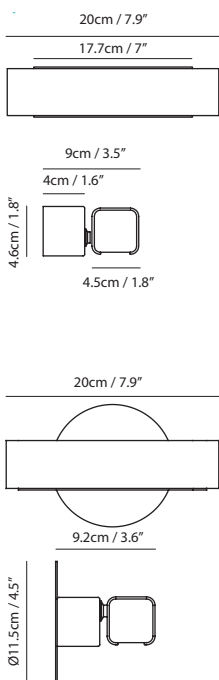
matt white + beech (wood cap)



matt black + walnut (wood cap) + round plate



matt white + beech (wood cap) + round plate



Mumu Wall



Model
SLD-3981W

Material
aluminum, wood

Light Source
LED 5.7W 3000K CRI90 400lm

Driver
Built-in non-dimmable driver

Weight
0.8kg / 1.8lb

Color

 matt black + walnut (wood cap)

 matt white + beech (wood cap)