

# LED WALL WASHER

ITEM NO.: LWW-W80 Series

## INSTRUCTION OF LED WALL WASHER-LWW-W80

This product is mainly used for decorating and highlighting in building frame, garden, etc. It can work in independent mode and DMX mode, which can generate various color changing effects, such as flashing, fading, seven color jumping synchronously etc. DMX256 class gray degree dimmer, DMX programmable (thousands of effects, available if many lights being connected together);

### A. Specification:

#### A-1. Structure:

Material of Shell: Aluminum alloy/6063  
 Rotary angle: 180°  
 Input Voltage:  120V AC  240V AC  277V AC  
 Operating Voltage: 24V DC  
 Protection Rating: IP65  
 Operating Temperature: -20°C-40°C



LWW-W80-16P-DMX

#### A-2. Model Configuration Table

| Model No.          | Size                    | LED Color  | Power consumption | Beam Angel          | Weight |
|--------------------|-------------------------|------------|-------------------|---------------------|--------|
| LWW-W80A/B-8P-DMX  | L610xW78/147xH118/70mm  | RGBW(4IN1) | 23Watts           | 15°/30°/40°/15°*35° | 2.4KGS |
| LWW-W80A/B-16P-DMX | L1220xW78/147xH118/70mm | RGBW(4IN1) | 45Watts           | 15°/30°/40°/15°*35° | 4.3KGS |

### B. Working Mode:

- B-1. Independent Mode: Choose the build-in programs via the buttons on the end cover.
- B-2. DMX Mode: International standard DMX512.
- B-3. Master/Slave Mode: Auto online and synchro working.
- B-4. The white LEDs cannot mix together with RGB at the same time.

### C. Function & Setup

#### C-1. DMX Addressing

When the digital LED is not flashing, press A, digital LED begin to flash, press A once, active digital LEDs moves backward, you can start to edit the second digital LED; Press B, the corresponding flash digital LED increase one bit (the values between 1 to 9);

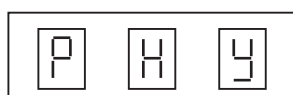
\*\*\* Valid DMX Address: 001~512



#### C-2. Independent Mode

After pressing A four times (the first three times is the setup on DMX address) or B directly, light enter into independent mode; the digital LEDs shows PXY, press A once, active digital LEDs moves backward, you can choose function via X and parameter via Y;

Press B, the corresponding flash digital LED increase one bit (range: 1~9);



X refer to functions (the value between 1 to C), Y refer to value of speed and gray degree for the functions (the value between 1 to 9).

# LED WALL WASHER

ITEM NO.: LWW-W80 Series

Function and parameter sheet:

| Color        | brightness |
|--------------|------------|
| 1-Red        | 1-9        |
| 2-Green      | 1-9        |
| 3-Red+green  | 1-9        |
| 4-Blue       | 1-9        |
| 5-Blue+red   | 1-9        |
| 6-Blue+green | 1-9        |

| Color                 | brightness/Speed |
|-----------------------|------------------|
| 7-white               | 1-9              |
| 8-Direct change       | 1-9              |
| 9-Monochrome gradient | 1-9              |
| A-Colorful gradient   | 1-9              |
| B-Stroboflash         | 1-9              |
| C-Auto run            | 1-9 times circle |

## C-3.Master/Slave Mode

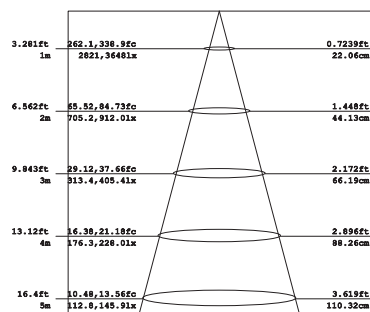
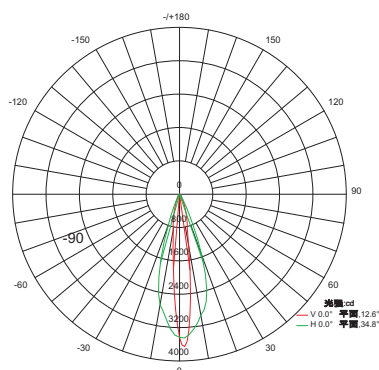
Choose any one light as the master for attaining auto online function,the operations are as below: firstly, set the address of master as 001,others are set as slave(address can be any one except 001); Change function of the master(001) light,then all lights will work synchronously

C-4.When pressing button,please wait for about 10 sec,then you can exit the mode of adjustment function,the digital LED stop flashing and data recorded.

## D.Photometric Parameters

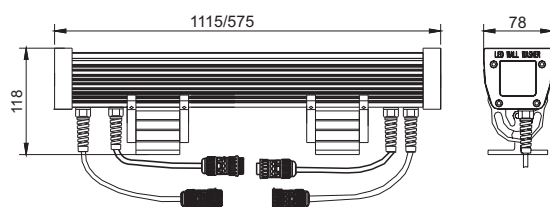
### D-1. Cadela Distribution

### D-2.Illuminance At A Distance

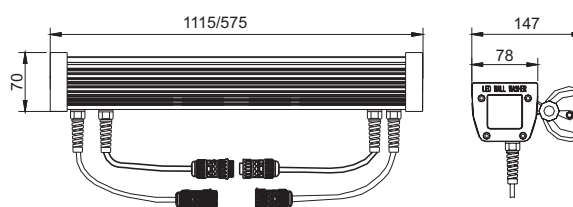


LWW-W80-15\*35°

## E.Dimension Drawing



LWW-W80A Bottom mounting bracket



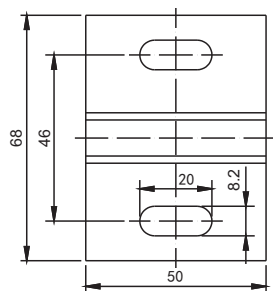
LWW-W80B Side mounting bracket

# LED WALL WASHER

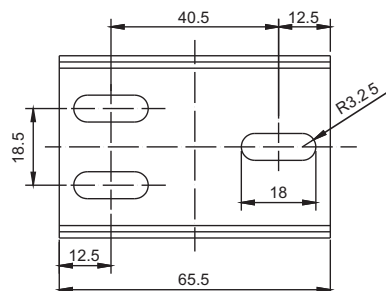
ITEM NO.: LWW-W80 Series

## F. Installation Drawing:

F-1. Fix the brackets via M4 tapping screw, mounting size as below



LWW-W80A Mounting Hole



LWW-W80B Mounting Hole

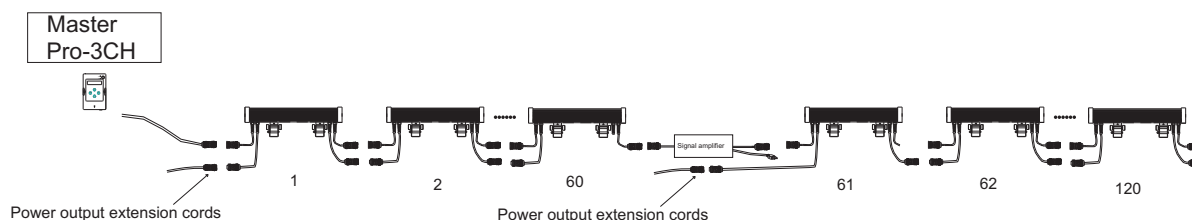
## G. Connection

G-1. Signal max connection is 100m, every 100m or 60pcs fixtures need a signal amplifier.

G-2. Max connection of L1115 Lamp : Input voltage 120V: 13PCS; Input voltage 240V: 26PCS.

G-3. Max connection of L575 Lamp: Input voltage 120V: 26PCS; Input voltage 240V: 52PCS.

G-4. Optional controller: MASTER PRO、Sunlite、DMX-192C、Madrix and other DMX controller.



### Caution:

1. Do not plug them into power when the product is still in package;
2. Don't use anything to cover the fixture during application;
3. Don't use this product in close environment;
4. If this product appears to be damaged, do not attempt any repair, please contact your dealer.

### Warning:

- \* Neglect on action of the above treatment will lead to failure of waterproof and proper working of the lights!!!
- \* Make sure the ground connection well avoid electric shock, due to metal housing.

Note: The above instruction are subject to update or improved without notice. Pls turn to our staff for further details !

Thanks for your long term support !



**Do not install the lamp in the lightning activity area.**  
**N'installez pas la lampe dans la zone d'activité de l'éclairage.**