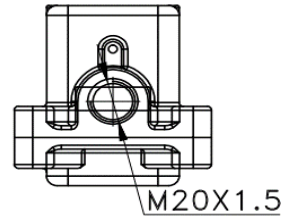
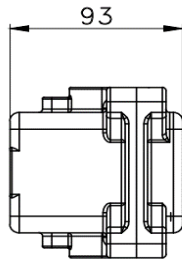
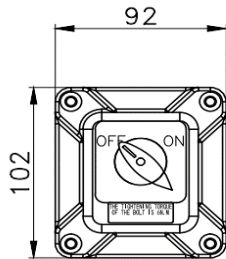


## LUMINAIRE SPECIFICATION

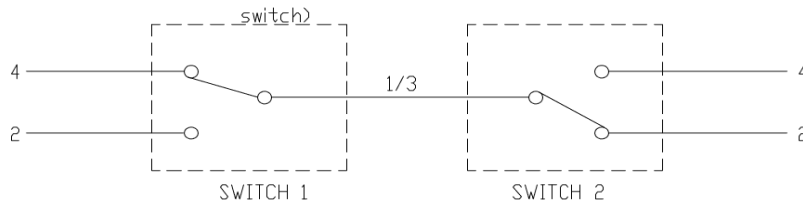
**PROJECT :**



Technical Data	
<b>Ex Marking</b>	Ex db IIB T6 Gb / Ex tb IIIC T80°C Db IP66
<b>Housing</b>	Die casting aluminum alloy enclosure ; high-voltage electrostatic powder coating
<b>IP Degree</b>	IP66
<b>Mounting Styles</b>	Wall-mounted
<b>Certification</b>	IECEX



WIRING DIAGRAM FOR TWO WAY SWITCH



**\*OPTIONAL ACCESSORIES:**



**CB-E1UF-M20**  
FOR SWA CABLE  
NICKEL PLATED BRASS



**CB-A2F-U-M20**  
FOR NEOPRENE CABLE  
NICKEL PLATED BRASS



**SP-M20**  
BLIND PLUG  
NICKEL PLATED BRASS

<b>Type :</b>	Ex-proof on/off switch	<b>Location :</b>	
<b>Model :</b>	LUMENEX MAMX-10-A1-D (16A)	<b>Legend :</b>	<b>Quantity:</b>
<b>Lamp Source:</b>	-	<b>Control Gear :</b>	N/A
<b>Color Temp :</b>	N/A	<b>Lumen:</b>	N/A
<b>IP Rating :</b>		<b>IP Rating :</b>	IP66
<b>Description :</b>	LUMENEX MAMX-10-A1-D, 16A explosion-proof 2 way on/off switch. **Cable gland not inclusive.	<b>Dimension:</b>	As shown above
		<b>Country of Origin :</b>	China
		<b>Comments:</b>	
<b>Submitted Date:</b>	<b>Revision:</b>	<b>Approved by:</b>	<b>Signature:</b>
		Architect	
		Consultant	