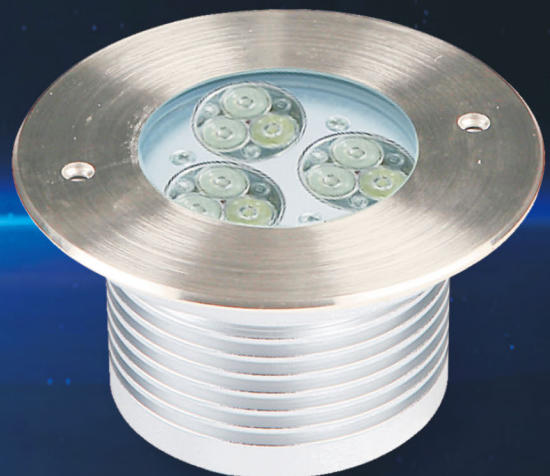
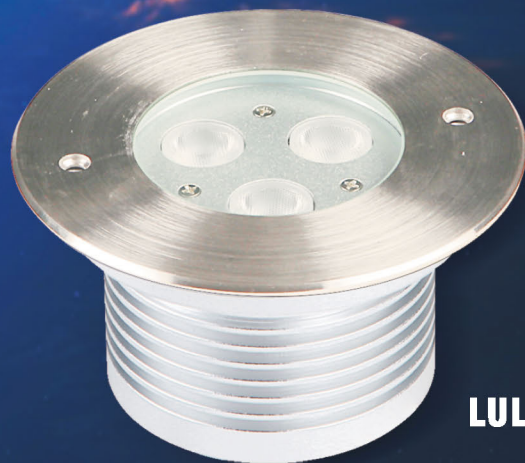


**LED UNDERGROUND LIGHT**  
**地埋灯**  
LUL-R120A系列



LUL-R120A-9P



LUL-R120A-3P

**Features 产品特点**

- \* 光源采用低热阻，高效率的品牌灯珠，极低的光衰率，达到3万小时的使用寿命。
- \* 灯体采用不锈钢面盖+6063铝合金，散热性能更优越。
- \* 透镜角度选择多样化。
- \* 采用IP67防水设计，结构+灌封双重防水
- \* Low thermal resistance, high efficiency LEDs used, low light decay rate extends LEDs life span to 30,000 hrs.
- \* Stainless steel cover + 6063 aluminum housing used for perfect-performace heat dissipation;
- \* Optional on optic LENSs;
- \* IP67 waterproof design with sealed glue plus structure;

**物理 & 安装尺寸 Physical & Installation Dimensions**



CE IP65 EPISTAR CREE

[ ENJOY THE LIGHT ]  
[ ENJOY THE LIFE ]

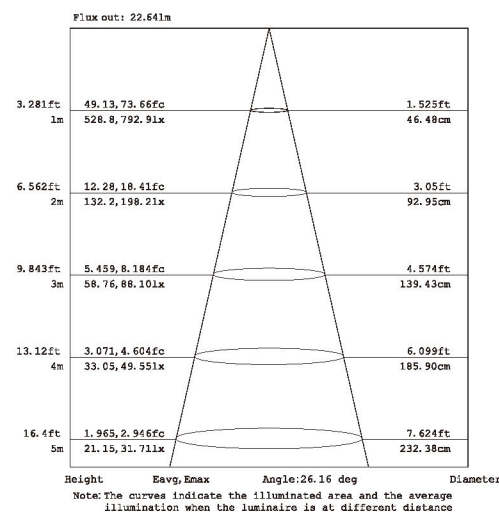
**标配型号 & 技术参数 Model Info & Specifications**

型号/Model	LUL-R120A-3P	LUL-R120A-9P
尺寸 /Size	D125xH66mm	D125xH66mm
材质 /Main body	316不锈钢+铝 /316 Stainless Steel+Aluminum	316不锈钢+铝 /316 Stainless Steel+Aluminum
重量 /Weight	1.3kg±5%	1.3kg±5%
灯珠数 /LED Quantity	3x3W	9x1W
灯珠颜色 /Color	单色 /Steady color	RGB全彩 /RGB
输入电压 /Input Volt	24V	12V/24VDC
最大功率 /Power(Max.)	9W	9W
透镜角度 /LENS	20°/30°/40°	15°/25°/40°(3in1)
控制方式 /Control Mode	单色 /Steady	CTR-RGB-12V/24V

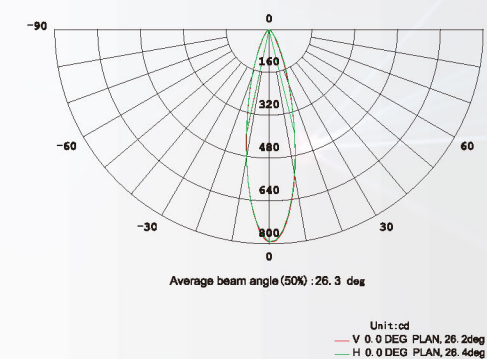
**应用场所 Project application**



**照度图 Illuminance At A Distance**



**光强分布曲线 Distribution Curve**



LUL-R120A-9P Beam Angle: 25°