

# LED LINEAR LIGHT

ITEM NO.: LLS-COVE-W40 Series

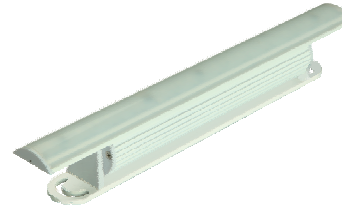
## INSTRUCTION OF LED LINEAR LIGHT/LLS-COVE-W40

The products are mainly used in indoor decoration lighting, especially for the application of the cove and ceiling. This series of products is divided into three kinds of working modes: steady color,color changing and dimming.

### A. Specification

#### A-1. Structure:

- Materials Of Shell: Aluminum + PC Cover
- Rotary Angle: 150°
- Input Voltage:  24V DC  120V AC  240V AC  
 100-277V AC
- Protection Rating: IP20
- Operating Temperature: -20°C~40°C



LLS-COVE-W40-L3

#### A-2. Model Configuration Table:

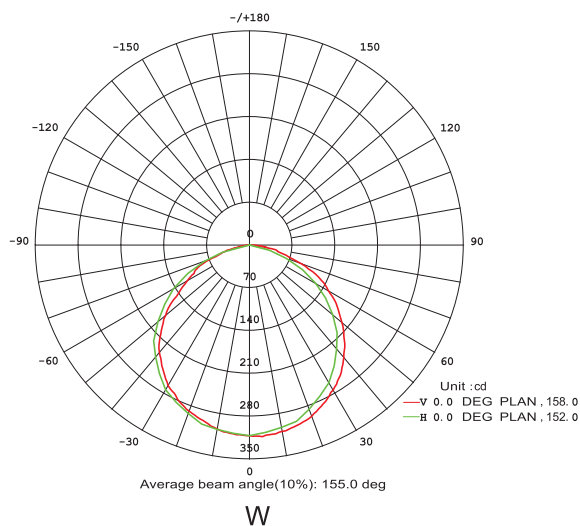
Model No.	LED Color	LED Quantity	Power Consumption	Beam Angel	Size	Weight	✓
LLS-COVE-W40-L3	RGB/RGBW/W	6P/12P	8 WATTS	15°/25°/35°/20x40°/120°	L300xW40xH45/51mm	0.35kg±5%	
LLS-COVE-W40-L6	RGB/RGBW/W	12P/24P	15 WATTS	15°/25°/35°/20x40°/120°	L600xW40xH45/51mm	0.75kg±5%	
LLS-COVE-W40-L12	RGB/RGBW/W	24P/48P	30 WATTS	15°/25°/35°/20x40°/120°	L1200xW40xH45/51mm	1.5kg±5%	

### B. Working Mode

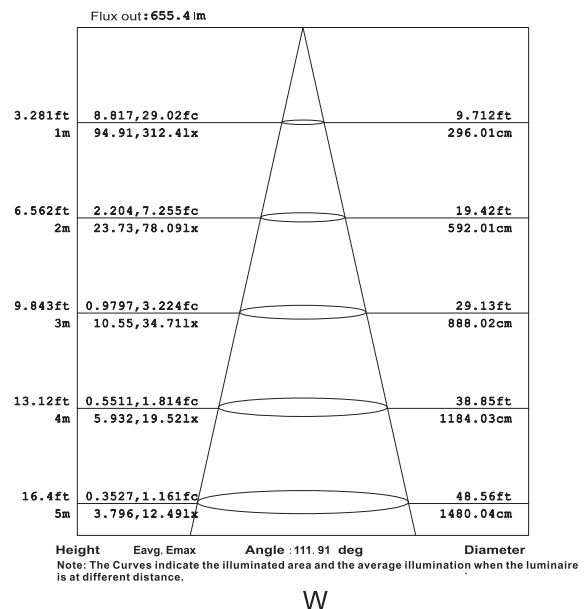
- B-1 Steady Color Mode: Power on/off.
- B-2 Dimming Mode: ELV/Triac and 0-10V dimming.
- B-3 DMX Mode: International standard DMX512 signal.

### C. Photometric Parameters

#### C-1. Cadela Distribution



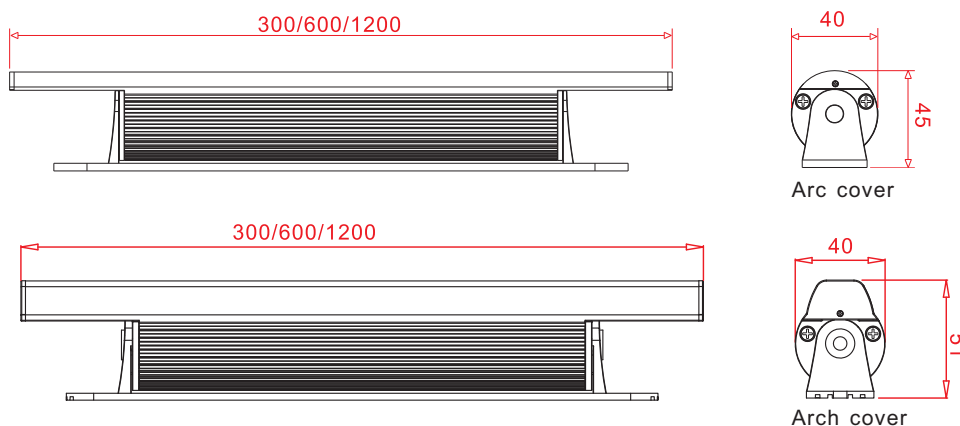
#### C-2. Illuminance At A Distance



# LED LINEAR LIGHT

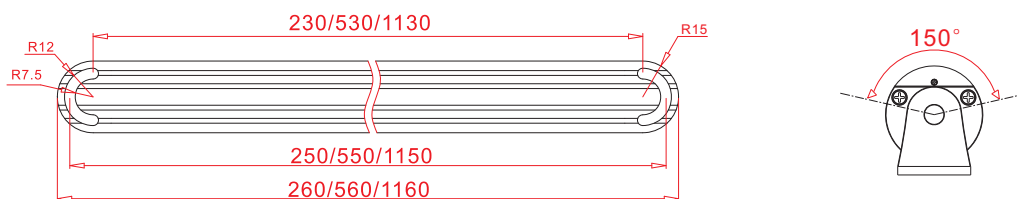
ITEM NO.: LLS-COVE-W40 Series

## D. Dimension Drawing (Unit:mm)



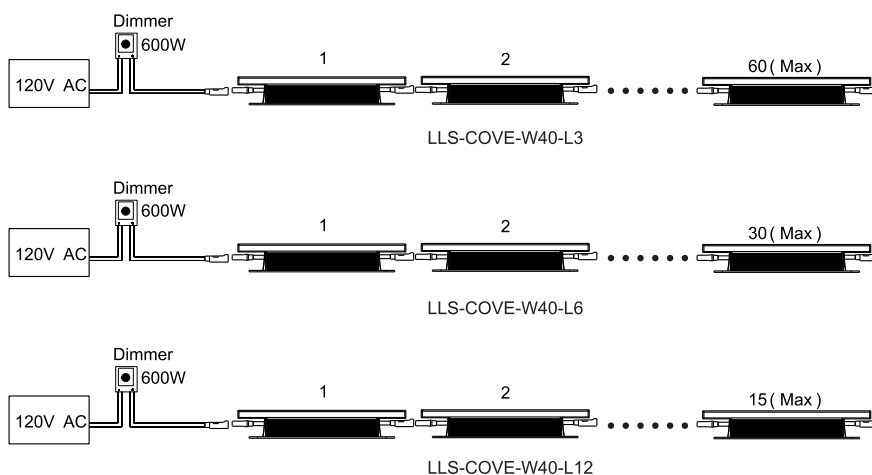
## E. Installation Drawing

- E-1. Use M4 screws to fix the base. The mounting size as below:
- E-2. Angle adjustment: Rotating lightbody directly.



## F. Connection

F-1. ELV/Traic Dimmer:



Dimmer=600W,120VAC

Model No.	Input Volt.	Connection Qty (Max)
LLS-COVE-W40-L3	120V AC	60PCS
LLS-COVE-W40-L6	120V AC	30PCS
LLS-COVE-W40-L12	120V AC	15PCS

# LED LINEAR LIGHT

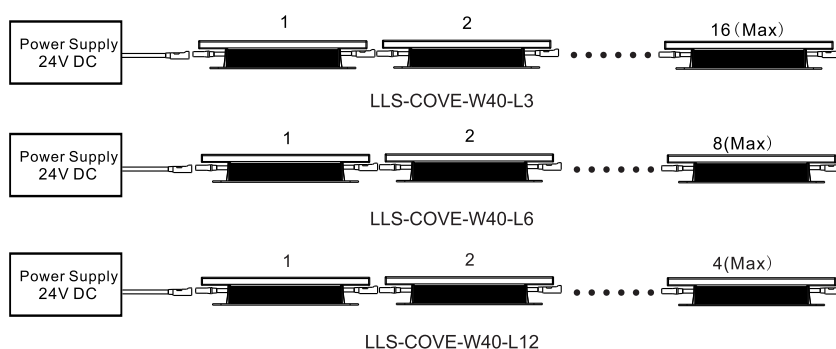
ITEM NO.: LLS-COVE-W40 Series

Dimmer=600W,240V/277V AC

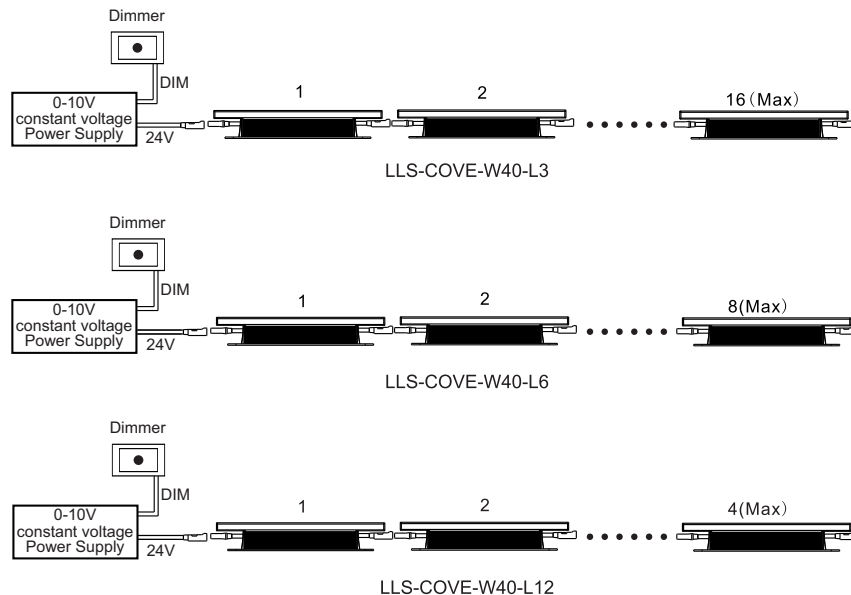
Model No.	Input Volt.	Connection Qty (Max)
LLS-COVE-W40-L3	240V/277V AC	60PCS
LLS-COVE-W40-L6	240V/277V AC	30PCS
LLS-COVE-W40-L12	240V/277V AC	15PCS

## F-2.Low voltage connection instruction :

### F-2-1.Steady color :



### F-2-2. 0-10V dimming :



### F-2-3.Steady color or 0-10V dimming :

Model No.	Input Volt.	Connection Qty (Max)
LLS-COVE-W40-L3	24V	16PCS
LLS-COVE-W40-L6	24V	8PCS
LLS-COVE-W40-L12	24V	4PCS

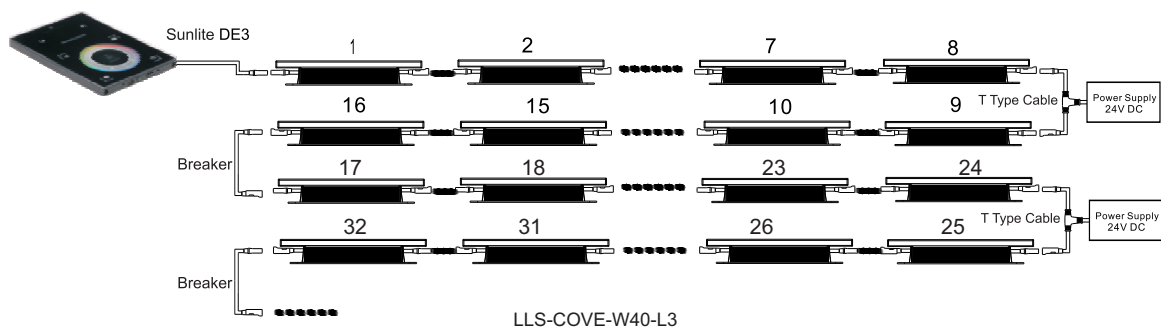
# LED LINEAR LIGHT

ITEM NO.: LLS-COVE-W40 Series

## F-3.DMX control connection instruction :

F-3-1.Signal max connection is 80m,every 80m or 40pcs fixtures need a signal amplifier.

F-3-2.Optional controller:MASTER PRO, Sunlite, DMX-192C, Madrix and other DMX controller.

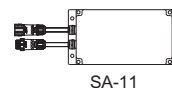
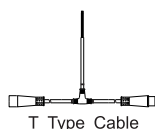
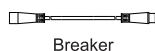


## F-3-3.DMX Control: ( 3 DMX channels for one fixture)

Model No.	Input Volt.	Power Connection Qty(Max*)	Signal Connection Qty(Max)
LLS-COVE-W40-L3	24V	16PCS	170PCS
LLS-COVE-W40-L6	24V	8PCS	170PCS
LLS-COVE-W40-L12	24V	4PCS	170PCS

**\*Suggest to use T-type cable and breaker for connection.**

Accessories for DMX Control ( optional )



Breaker: Used to isolate the electrical current and pass the signal.

T-type cable: Used to split one power input into two outputs.

SA-11: As the signal amplifier to enhance the signal when attenuation.

### Caution:

1. Do not plug them into power when the product is still in package;
2. Don't use anything to cover the fixture during application;
3. Don't use this product in close environment;
4. If this product appears to be damaged, do not attempt any repair, please contact your dealer.

### Warning:

- \* The products are only for indoor use !!!
- \* Please ensure the ground connection,so as to avoid the electric shock.
- \* Application in close environment is prohibited.

**Note:** The above instruction are subject to update or improved without notice.Pls turn to our staff for further details !  
Thanks for your long term support !



**Do not install the lamp in the lightning activity area.**