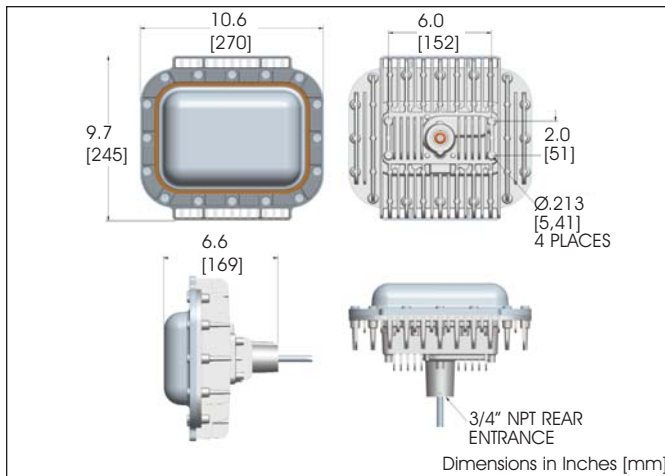




Patent Pending

DuroSite® LED Area Light



Certifications

- Certified to UL 1598/A
- Certified to C22.2
- Nema 4X (pending)
- IP66 (pending)

Features & Benefits

- 5 year full performance warranty
- Instant on/off operation
- Universal input (100-277 VAC), 50/60Hz
- Superior color rendition index compared to HPS, LPS, MV
- Mercury free
- Resistant to shock and vibration
- Temperature compensation technology for longer life
- L70 rated for >100,000 hours @ 25°C ambient
- Factory sealed

Ordering Codes:

Part Number	Optical Pattern	Color	Initial Fixture Lumens	Wattage	Lumens Per Watt	Replaces Up To
STW2C2N	180	Cool White	3,500	43	81	70W HID
STW3C2N	360	Cool White	3,500	43	81	70W HID
STW4C2N	180	Cool White	4,500	55	82	175W HID
STW5C2N	360	Cool White	4,500	55	82	175W HID
STW8C2N	180	Cool White	5,800	70	83	250W HID
STW9C2N	360	Cool White	5,800	70	83	250W HID

¹180° optical pattern versions are optimized for a 45° mounting angle

²Part numbers listed in the above table are cool white. For neutral white version replace the 5th character with N Ex: STW2C2N becomes STW2N2N

Application:

The DuroSite® LED area light represents the future of energy efficient facility illumination for industrial applications worldwide. The lighting fixture consumes at least 50% less energy than traditional HID light sources, while reducing maintenance and carbon emissions. This light incorporates both cutting edge LED technology along with proprietary optics to achieve area lighting comparable with other traditional light sources. Whether your application is in a work area or any other application, this fixture offers improved performance across the board.

Mechanical Information

Fixture Weight:	10lb (4.5 kg)
Shipping Weight:	12lb (5.44 kg)
Mounting:	(1) Threaded 3/4" NPT rear
Cabling:	10' (3.5m) SOOW Power Cord

Electrical specifications

Operating Voltage :	100-277VAC, 50/60 Hz
Power Consumption:	43W / 55W / 70W
Operating Temp:	-40°F to +149°F (-40°C to +65°C)

Noise Requirements/ EMC:

FCC Title 47, Subpart B, Section 15, class A device. RF Immunity; 10V/m, 80MHz-1GHz

Surge Protection:

1 kV line to line
2 kV line to ground

THD:

<15%

Power Factor:

> 0.9

Construction

Housing:	Powder coated aluminum
Finish:	Polyester / epoxy powder coat gray RAL 7040 for superior corrosion resistance
Lens:	Polycarbonate - UL1598A wet location

Photometric Information

CRI:	> 70
CCT:	5,700K (cool white) 4,300K (neutral white)
Optics:	180° forward throw 360° circular pattern

IES Files:

Available upon request

All values typical unless otherwise state

DuroSite® LED Area Light

Mounting Options

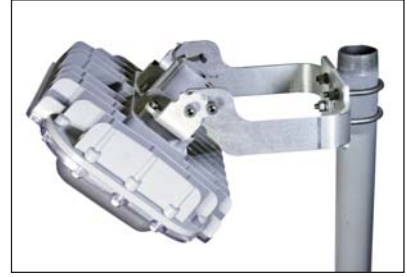
Conduit Mount



Swing Bracket



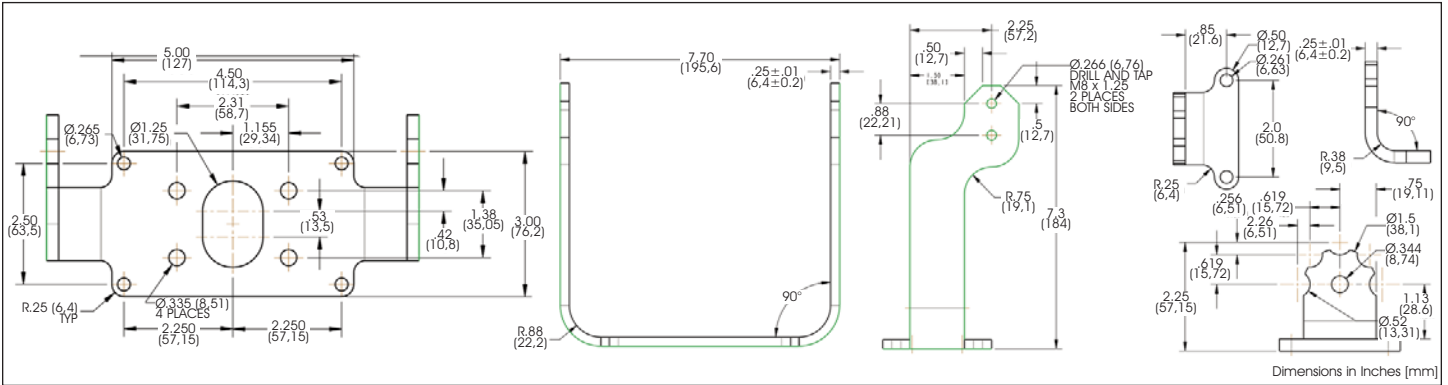
Swing Bracket with Stanchion Mount



Swing Bracket Dimensions

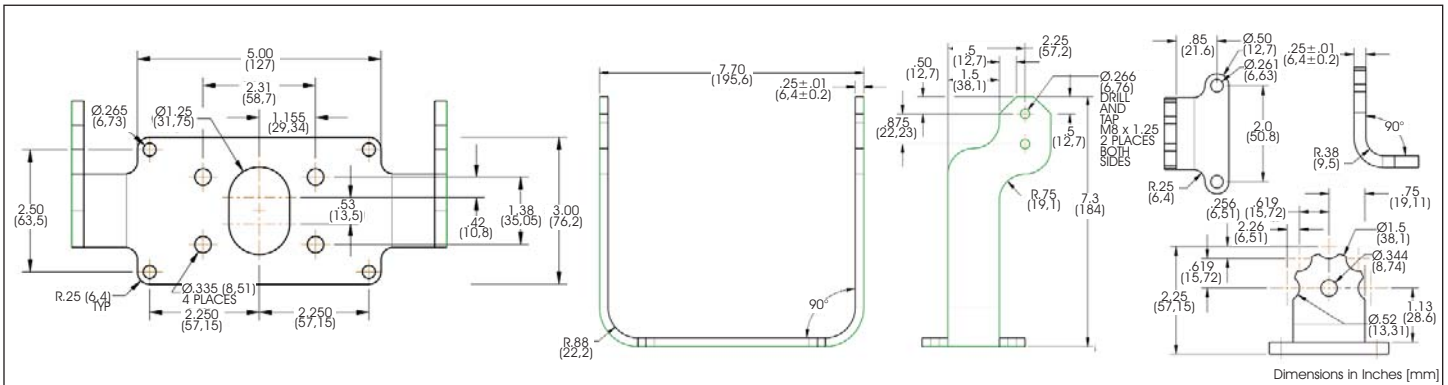
HZXW2

A standard duty Aluminum bracket, .25" thick 6061-T6 and powder coated.



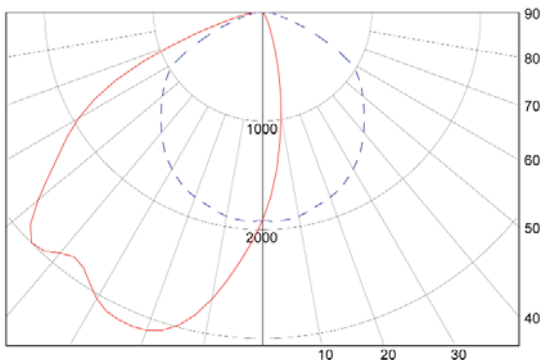
HZXW4

A standard duty Aluminum bracket, .25" thick 6061-T6 and powder coated. This bracket will mount to 1.5" conduit and comes with pipe mount clamps.

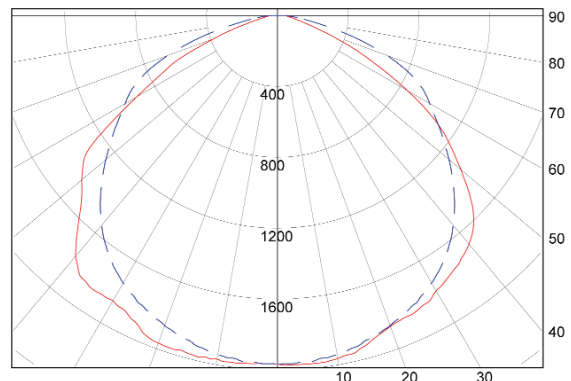


Polar Plots

180° Optical Pattern Mounted at 45°



360° Optical Pattern



Dialight reserves the right to make changes at any time in order to supply the best product possible. The most current version of this document will always be available at: www.dialight.com/Assets/Brochures_And_Catalogs/Illumination/MDTFSTWALX001.pdf