



# MASTER LEDtube EM/ Mains T8

## MASTER LEDtube 600mm HO 8W840 T8

The Philips MASTER LEDtube integrates a LED light source into a traditional fluorescent form factor. Its unique design creates a perfectly uniform visual appearance which cannot be distinguished from traditional fluorescent. For those that are looking for value for money within limited budget and re-lamping efforts for better light effect and lifetime.

### Warnings and Safety

- NOTES: The overall energy efficiency and light distribution of any installation that uses these lamps are determined by the design of the installation.

### Product data

General Information		LLMF At End Of Nominal Lifetime (Nom) 70 %	
Cap-Base	G13 ROT (Rotating) [ Medium Bi-Pin Fluorescent]	<b>Operating and Electrical</b>	
EU RoHS compliant	Yes	Input Frequency	50 to 60 Hz
Nominal Lifetime (Nom)	60000 h	Power (Nom)	8 W
Switching Cycle	200000X	Lamp Current (Max)	42 mA
<b>Light Technical</b>		Lamp Current (Min)	36 mA
Color Code	840 [ CCT of 4000K]	Starting Time (Nom)	0.5 s
Beam Angle (Nom)	160 °	Warm Up Time to 60% Light (Nom)	0.5 s
Luminous Flux (Nom)	1050 lm	Power Factor (Nom)	0.9
Color Designation	Cool White (CW)	Voltage (Nom)	220-240 V
Correlated Color Temperature (Nom)	4000 K	<b>Temperature</b>	
Luminous Efficacy (rated) (Nom)	131.00 lm/W	T-Ambient (Max)	35 °C
Color Consistency	<6	T-Ambient (Min)	-20 °C
Color Rendering Index (Nom)	83	T-Storage (Max)	65 °C

# MASTER LEDtube EM/Mains T8

T-Storage (Min)	-40 °C
T-Case Maximum (Nom)	50 °C

## Controls and Dimming

Dimmable	No
----------	----

## Mechanical and Housing

Bulb Finish	Frosted
Bulb Material	Plastic
Product Length	600 mm

## Approval and Application

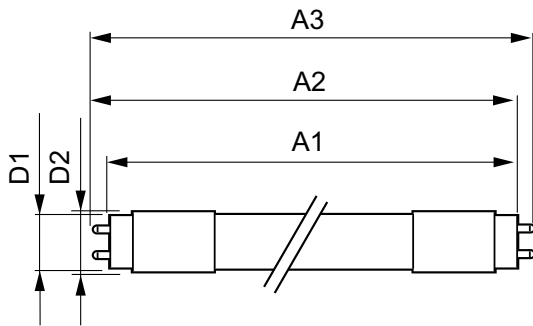
Energy Efficiency Label (EEL)	A++
Energy Saving Product	Yes
Approval Marks	RoHS compliance TUV CE marking KEMA Keur certificate

Energy Consumption kWh/1000 h	8 kWh
-------------------------------	-------

## Product Data

Full product code	871869669749800
Order product name	MASTER LEDtube 600mm HO 8W840 T8
EAN/UPC - Product	8718696697498
Order code	929001307102
Numerator - Quantity Per Pack	1
Numerator - Packs per outer box	10
Material Nr. (12NC)	929001307102
Net Weight (Piece)	0.150 kg

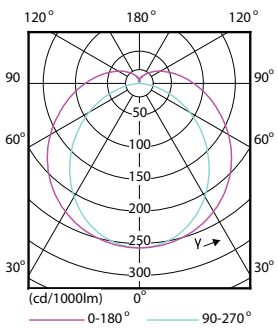
## Dimensional drawing



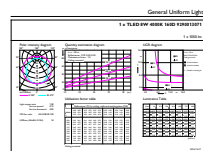
TLED 220-240V 8W-18W 1050lm 4000K G13

Product	D1	D2	A1	A2	A3
MASTER LEDtube 600mm HO 8W840 T8	25.78 mm	28 mm	588.5 mm	595.5 mm	602.5 mm

## Photometric data



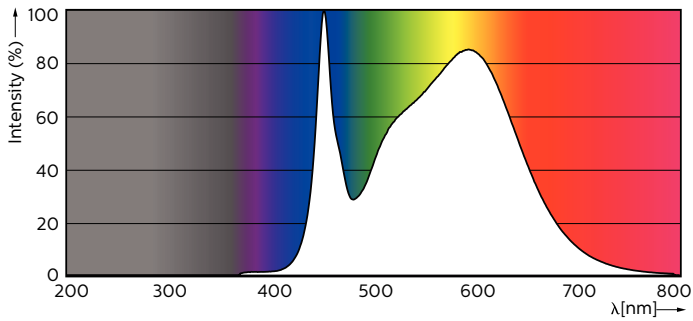
LEDtube 600mm 1200mm 1500mm UO T8



LEDtube 600mm HO 8W840 T8

# MASTER LEDtube EM/Mains T8

## Photometric data



LEDtube 600mm HO 8W840 T8

## Lifetime



LEDtube 600mm 1200mm 1500mm UO T8



LEDtube 600mm 1200mm 1500mm UO T8

