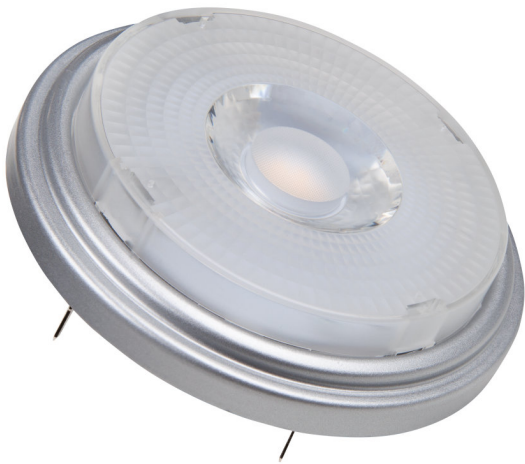


PRODUCT DATASHEET

PPRO AR111 50 40° 7.3 W/3000K G53

PARATHOM PRO AR111 | Low-voltage LED reflector lamps AR111 with retrofit pin base



AREAS OF APPLICATION

- Shops and exhibition rooms
- Domestic applications
- Commercial applications
- Accent lighting
- Outdoor use in outdoor luminaires only (minimum IP65)

PRODUCT BENEFITS

- Quick, simple and safe replacement without rewiring
- Design, dimensions, luminous flux comparable to an incandescent or halogen lamp
- Low maintenance costs thanks to long lifetime
- No UV and near-IR radiation in the light beam
- Stepless dimming
- Very high dimmer compatibility, see also www.ledvance.com/dim
- Compatible with many common conventional and electronic control gears (see also compatibility list)
- Instant 100 % light, no warm-up time

PRODUCT FEATURES

- LED alternative to low voltage halogen lamps
- Dimmable
- Base: G53
- Excellent color rendering ($R_a : 97$)



– Lifetime: up to 40,000 h

TECHNICAL DATA

Electrical data

Rated wattage	7.30 W
Nominal wattage	7.30 W
Nominal voltage	12 V
Claimed equiv. conventional lamp power	50 W
Max. lamp no. on circuit break. 10 A (B)	6
Max. lamp no. on circuit break. 16 A (B)	10
Operating frequency	50...60 Hz
Power factor λ	> 0.60

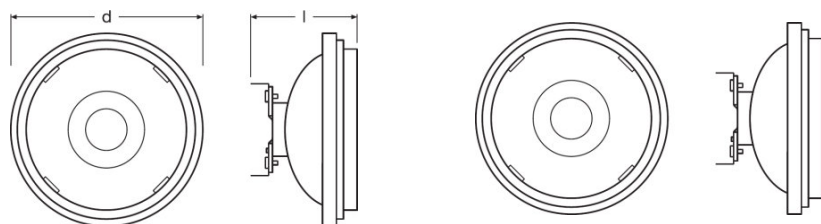
Photometrical data

Nominal luminous flux	450 lm
Rated luminous flux	450 lm
Lumen main.fact.at end of nom.life time	0.70
Light color (designation)	Warm White
Color temperature	3000 K
Luminous flux	450 lm
Color rendering index Ra	97
Standard deviation of color matching	≤ 4 sdcn
Rated color temperature	3000 K
Nominal useful luminous flux 90°	450 lm
Rated useful luminous flux 90°	450 lm
Rated peak intensity	1000 cd

Light technical data

Beam angle	40 °
Warm-up time (60 %)	< 0.10 s
Starting time	< 0.1 s
Nominal beam angle	40 °
Rated beam angle (half peak value)	40.00 °

Dimensions & weight



Overall length	62.0 mm
Diameter	111.0 mm
Outer bulb	AR111
Length	62.0 mm
Maximum diameter	111.0 mm

Temperatures & operating conditions

Ambient temperature range	-20...+40 °C
Maximum temperature at tc test point	86 °C

Lifespan

Nominal lamp life time	40000 h
Rated lamp life time	40000 h
Number of switching cycles	100000

Additional product data

Base (standard designation)	G53
Mercury content	0.0 mg
Mercury-free	Yes
Show WEEE picto	Yes
Product remark	All technical parameters apply to the entire lamp/Due to the complex production process for light-emitting diodes, the typical values shown for the technical LED parameters are purely statistical values that do not necessarily match the actual technical parameters of each individual product, which can vary from the typical value

Capabilities

Dimmable	Yes
-----------------	-----

Certificates & standards

Energy efficiency class	A
Energy consumption	8 kWh/1000h

Country-specific categorizations

Order reference	LPAR111 5040 7,
------------------------	-----------------

LOGISTICAL DATA

Product code	Packaging unit (Pieces/Unit)	Dimensions (length x width x height)	Gross weight	Volume
4058075448445	Folding carton box 1	113 mm x 66 mm x 113 mm	171.00 g	0.84 dm ³
4058075448452	Shipping carton box 6	238 mm x 208 mm x 123 mm	1191.00 g	6.09 dm ³

The mentioned product code describes the smallest quantity unit which can be ordered. One shipping unit can contain one or more single products. When placing an order, for the quantity please enter single or multiples of a shipping unit.

REFERENCES / LINKS

For dimming conformity see

▶ www.ledvance.com/dim

For Guarantee see

▶ www.ledvance.com/guarantee

For further products and actual information concerning LED lamps see

▶ www.ledvance.com/ledlamps

Further information see

▶ www.ledvance.com/low-voltage-ledlamps

DISCLAIMER

Subject to change without notice. Errors and omission excepted. Always make sure to use the most recent release.