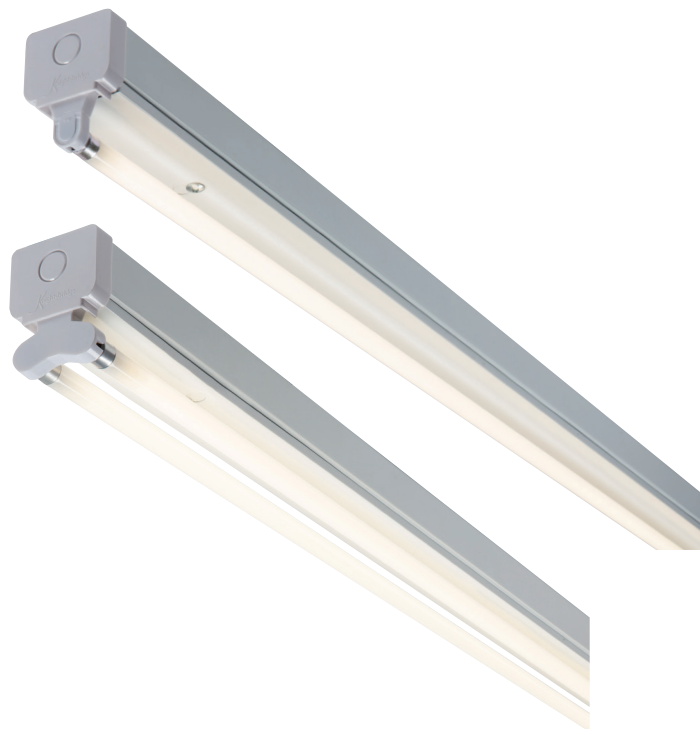


Datasheet

T5 BATTEN SERIES

230V T5 Batten



RS Stock No.:	851-3002	851-3006	851-3018	851-3021	851-3028	851-3037	851-3034	851-3046
Description:	IP20 T5 Batten Series							
Finishes:	White							
Weight (kg):	0.625	1.475	1.85	1.85	0.7	1.55	2	2
Wattage (W):	14	28	35	54	2 x 14	2 x 28	2 x 35	2 x 49
Total circuit Power (W):	15	30	38	49	31	61	75	106
Overall length (mm):	575 (l)	1175 (l)	1475 (l)	1475 (l)	574 (l)	1175 (l)	1475 (l)	1475 (l)
Input voltage:	230V 50Hz							
Lamp Type:	T5							
Construction:	Pressed Steel with Polycarbonate end caps							
Control gear:	High Frequency soft start ballast							
Class:	Class I							
IP rating:	IP20							
Warranty:	1 Year							
Photometric data:	No							
Dimmable:	No							
Instruction sheet:	Yes							
Origin of Manufacture:	China							
Quality assurance system:	ISO 9001							
Declaration of Conformity (held on file):	Yes							
Manufactured & accordance with:	EN60598							

