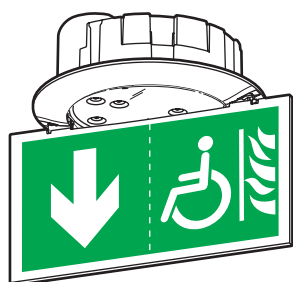
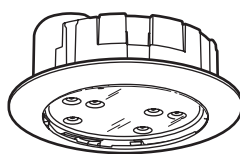


0 625 14/24/74



0 625 54



0 625 64

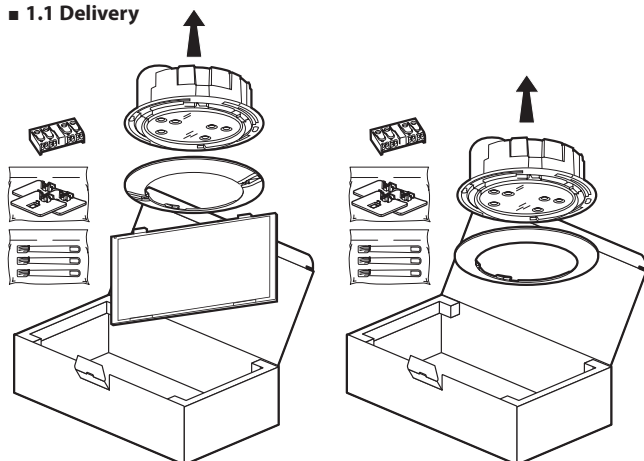
CONTENTS	Page
1. Description .....	1
2. Installation .....	2
3. Connection .....	4
4. Use .....	8
5. Maintenance .....	9
6. Compliance and approvals .....	11

## 1. DESCRIPTION

IP 40 - IK 04 self-contained emergency evacuation and background lighting units (BAES) and reinforced emergency lights (DBR)  
Class II:

	SATI/AutoDiag	Cons. (W)	Batteries	Standby power
<b>Evacuation BAES</b>	<b>0 625 24</b>	0.6 W	2 KRMT 15/51 Ni-Cd 0.8 Ah 2.4 V	45 lm - 1 hr
<b>BAES + BAEH</b>	<b>0 625 14</b>	0.9 W	2*2 KRMT 15/51 Ni-Cd 0.8 Ah 2.4 V	45 lm - 1 hr 8 lm - 5 hrs
<b>Evacuation BAES + DBR</b>	<b>0 625 54</b>	0.9 W	2 KRMT 23/43 Ni-Cd 1.5 Ah 2.4 V	45 lm - 1 hr
<b>BAEH</b>	<b>0 625 74</b>	0.6 W	2 KRMT 15/51 Ni-Cd 0.8 Ah 2.4 V	8 lm - 5 hrs
<b>Background BAES</b>	<b>0 625 64</b>	0.7 W	2*2 HRMT 23/43 Ni-Mh 2.2 Ah 2.4 V	320 lm - 1 hr

### 1.1 Delivery



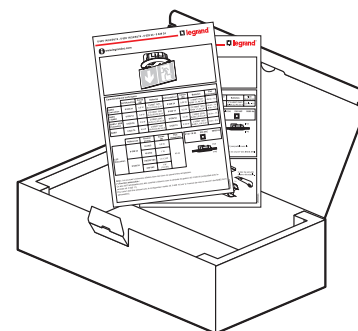
Sign labels supplied with the product.



Lighting unit  
Cat. Nos. 0 625 14/24/74

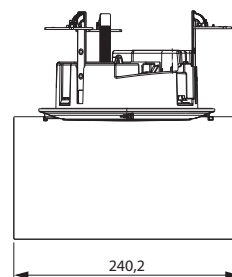
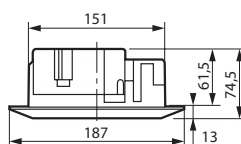


Lighting unit + reinforced emergency light  
Cat. No. 0 625 54



Instructions included inside the box

### 1.2 Dimensions



### 1.3 Technical characteristics

- Product for ceiling mounting.
- Self-contained emergency lighting unit with LEDs used for evacuation in public buildings and work premises (Cat. Nos. 0 625 14/24/54/74) or for background lighting (Cat. No. 0 625 64).
- Conforming to standards:
  - 0 625 24 conforming to NF C 71-800
  - 0 625 64 conforming to NF C 71-800, NF C 71-801 and UTE C 71-806
  - 0 625 74 conforming to NF C 71-805
  - 0 625 14 conforming to NF C 71-800, NF C 71-805 and UTE C 71-803
  - 0 625 54 conforming to NF C 71-800 and PE 110-633
- All these catalogue numbers also conform to the following standards: EN 60 598-1, EN 60 598-2-22, NF C 71-820 and NF 413
- Awarded the "NF AEAS performance SATI" and "NF environnement" quality marks.
- Class II:

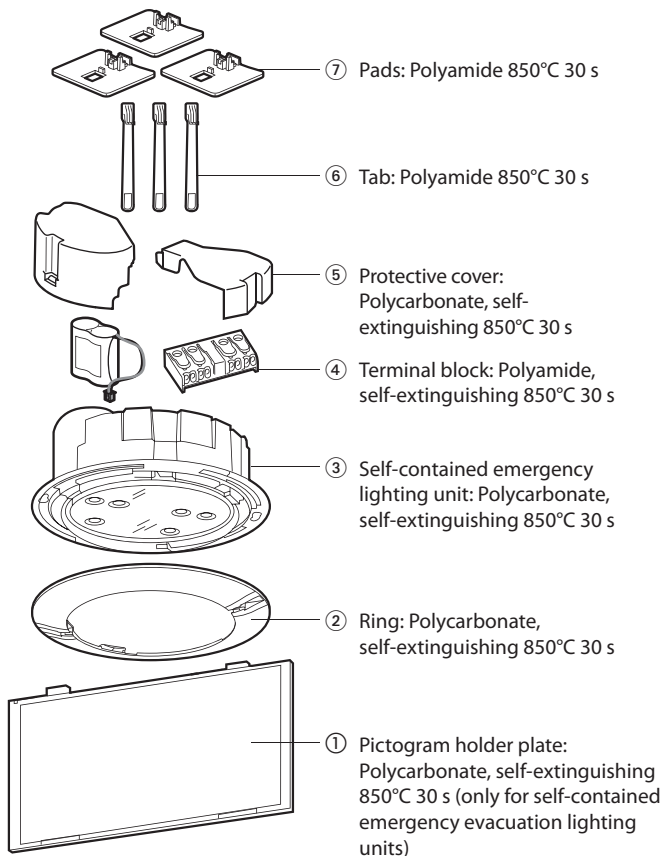
## 1. DESCRIPTION (CONTINUED)

### ■ 1.3 Technical characteristics (continued)

- Remote control for setting to rest state during intentional mains power breaks.
- Remote control input terminals protected against connection errors.
- 230 V +/- 10 % - 50/60 Hz power supply.
- Operating temperature 0°C to 40°C.

### ■ 1.4 Materials

Class II plastic casing: □



All plastic parts weighing more than 50 g are marked with their material type so that the materials can be recycled at the end of life of the product.

### ■ 1.5 Calorific value

Thermal load of the plastic components of the casing:  
 0 625 14/24/54/74: 18 MJ  
 0 625 64: 12 MJ

### ■ 1.6 Possible signs


Self-contained emergency evacuation lighting units are supplied with a set of sign labels (directional arrow and a person) suitable for most evacuation situations encountered in buildings.


With Cat. Nos. 0 625 14/24/74:



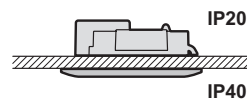
With Cat. No. 0 625 54:



 Evacuation label Cat. No. 0 626 88 for people with reduced mobility used to point out dedicated wheelchair exits (exits with ramps).

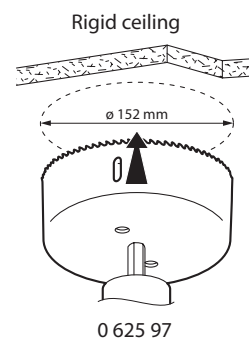
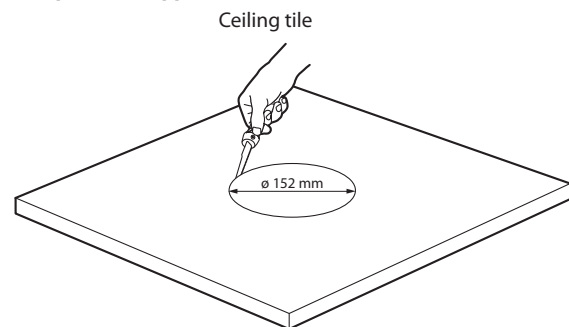
 Cat. No. 0 626 87: label showing a 45° right arrow. Removable and recyclable.

## 2. INSTALLATION



Affix a maintenance label Cat. No. 0 609 01 and write the commissioning date on it (see 6.1)

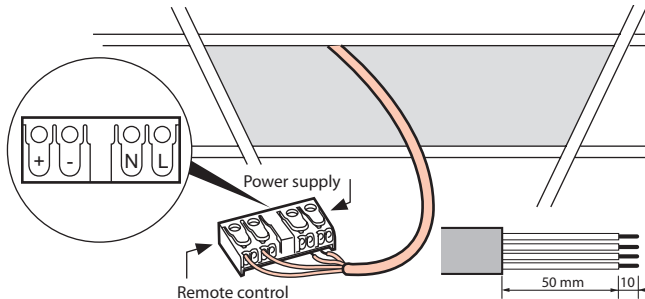
### ■ 2.1 Prepare the support



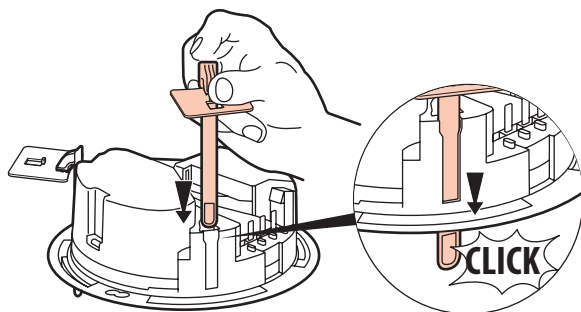
**2. INSTALLATION (CONTINUED)**

■ **2.2 Connecting the wires to the terminal block**

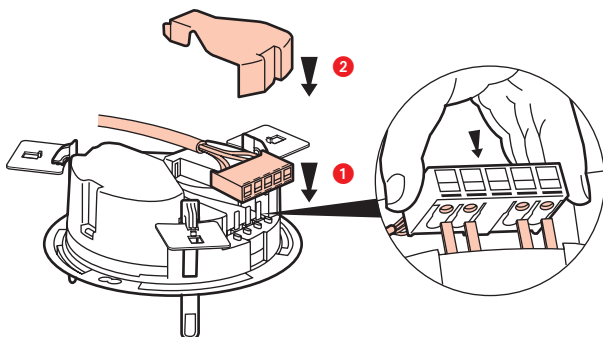
REMOTE CONTROL - Connection terminals: no direction of connection with Legrand remote controls  
Terminal capacity: 2 x 2.5 mm<sup>2</sup>.



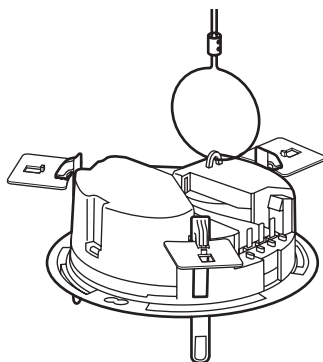
Insert the tabs in the unit



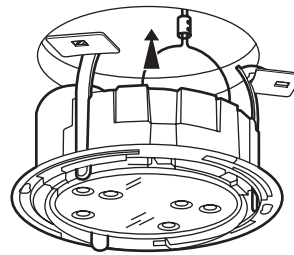
Connect the terminal block to the unit



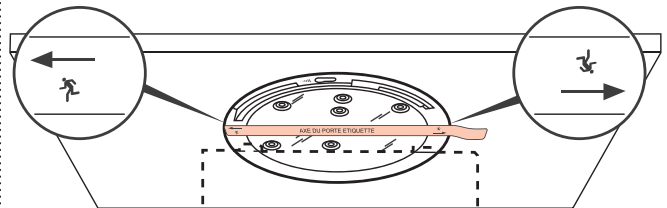
■ **2.3 Anchor the lighting unit to the building structure**



Flush-mount the unit in the support



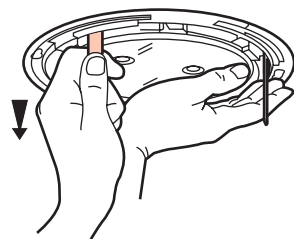
Swivel the unit  
(only for evacuation lighting units Cat. Nos. 0 625 14/24/54/74)



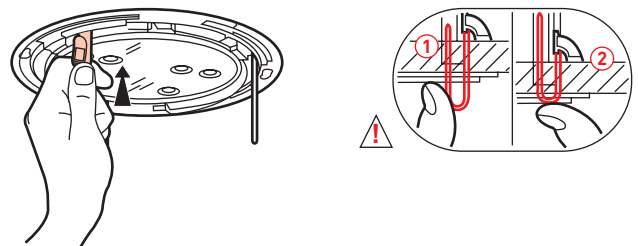
Position the unit according to the final label holder orientation.

The label makes it clear which position the pictogram holder should be in.

Flush-mount the unit in the support



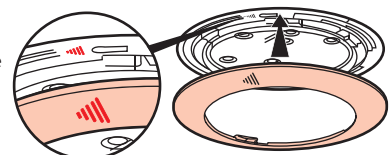
Fully push in the tabs



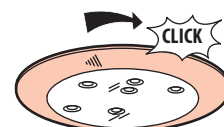
■ **2.4 Assembling the background lighting unit Cat. No. 0 625 64**

1 Position the ring on the unit.

Position the ring on the unit by lining up the 2 marks opposite one another.

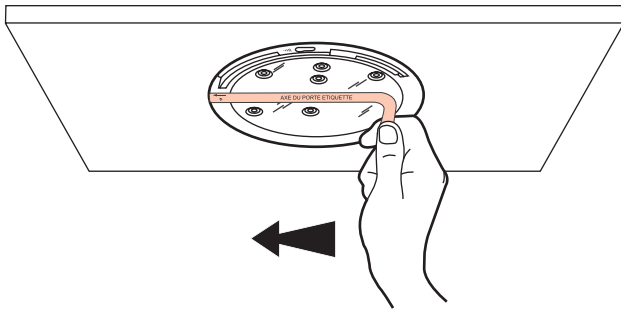


2 Lock with a 1/4 turn.



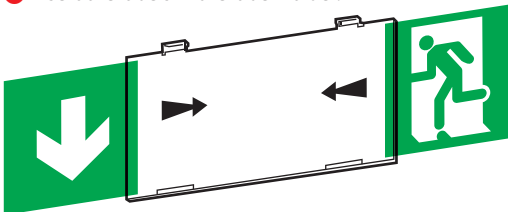
**2. INSTALLATION (CONTINUED)**

Remove the label from the unit (only for SELF-CONTAINED EMERGENCY EVACUATION LIGHTING UNIT Cat. Nos. 0 625 14/24/54/74)

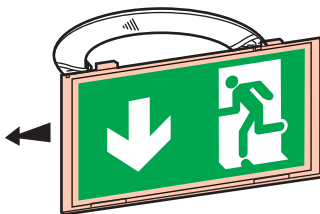


**■ 2.5 Assembling emergency lighting units  
Cat. Nos. 0 625 14/24/54/74**

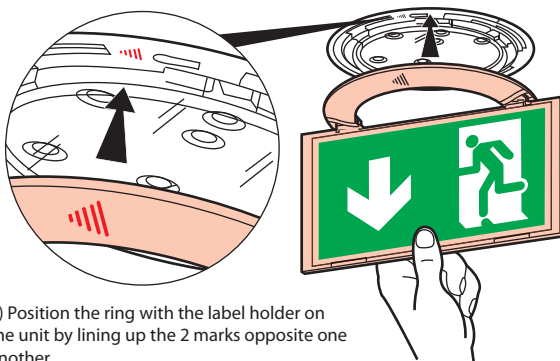
1) Insert the labels in the label holder.



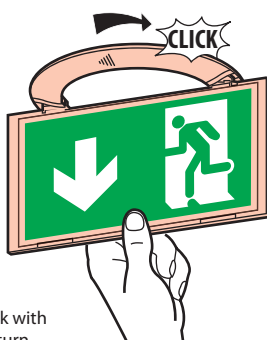
2) Insert the label holder in the cover plate.



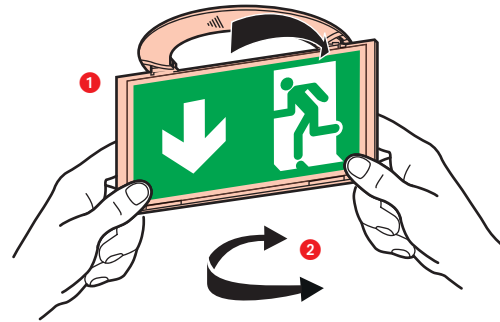
3) Fix the assembly on the unit.



1) Position the ring with the label holder on the unit by lining up the 2 marks opposite one another.



2) Lock with a 1/4 turn.



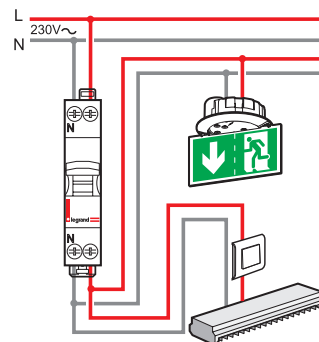
Once pushed in as far as it will go, the pictogram holder orientation can be adjusted by tilting it back slightly.

**3. CONNECTION**

**■ 3.1 Connecting the mains power to the self-contained units**

Art. EC 12 § 3 of the safety regulations.

The branch supplying a unit must be joined upstream of the protection device and downstream of the normal lighting control device for the room or exit route where the unit is installed.



The branch can be joined in the electrical cabinet, on the switch or in a junction box.

The power supply to the units is subject to the same rules as the luminaires (normal wiring).

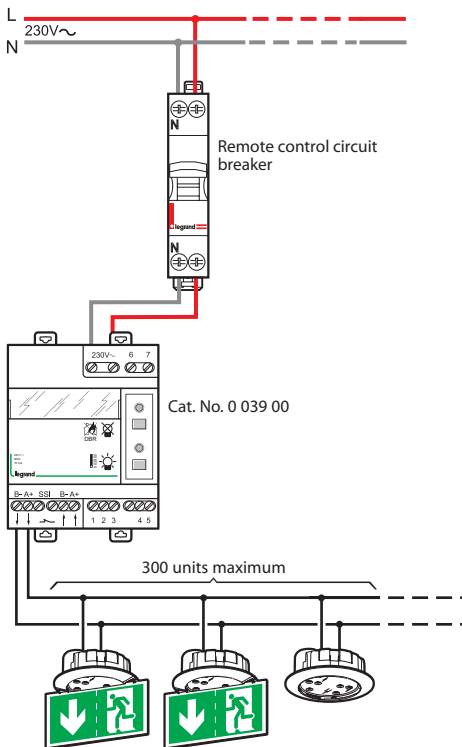
The polarity of the remote control may not be followed on this lighting unit if a Legrand remote control Cat. No. 0 039 00 or 0 039 01 is used. If another remote control is used, the polarity must be followed when wiring, and the switch-on or switch-off command must be maintained for at least 2 seconds.

⚠ Self-contained emergency lighting units + home lighting units and reinforced emergency lights must be always wired to a remote control 0 039 00.

**3. CONNECTION (CONTINUED)**

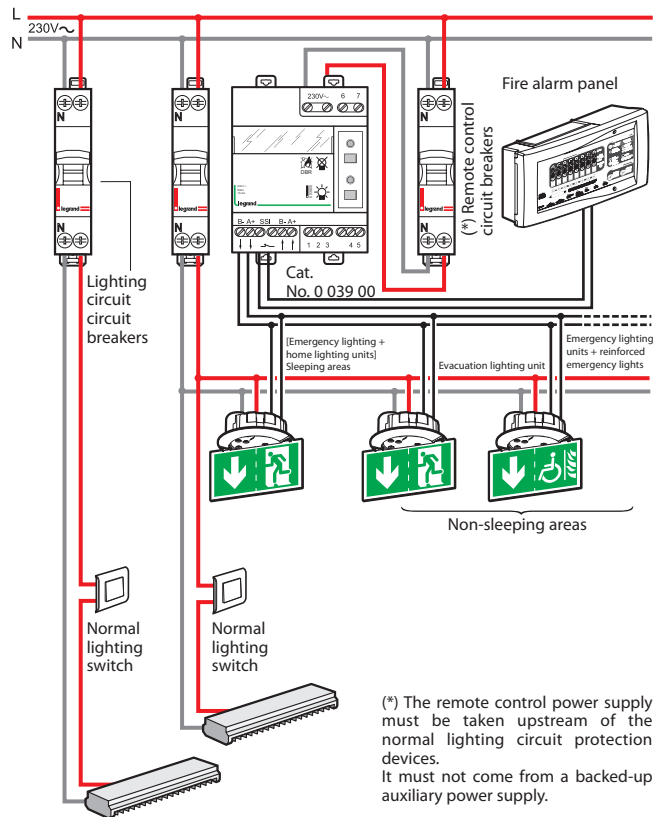
**3.2 Remote control for setting to rest state**

Operation with Evacuation and/or Background lighting units in buildings open to the public that have neither sleeping accommodation nor a safe waiting area.



**3.3 Connection for an installation in self-testing mode**

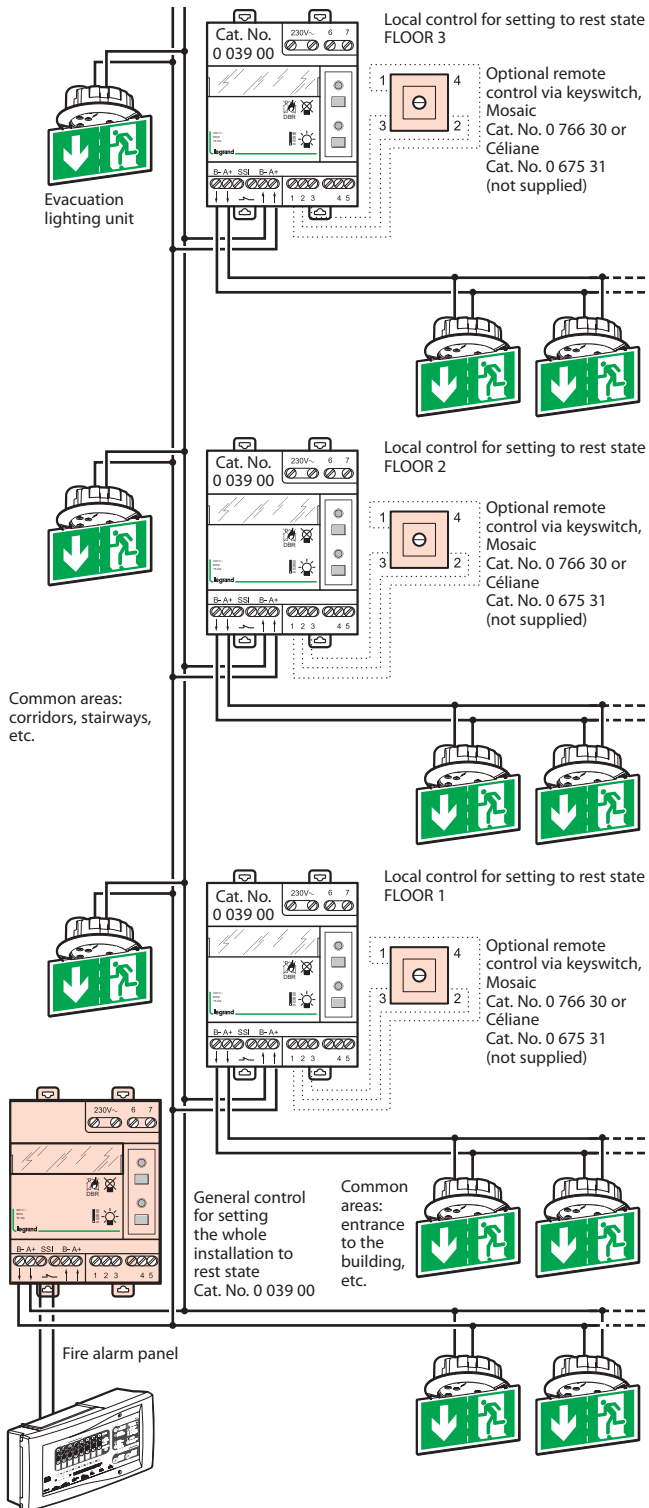
3.3.1 Operation with [emergency lighting units + home lighting units], [emergency lighting units + reinforced emergency lights] and self-contained emergency lighting units in buildings open to the public having sleeping accommodation (French regulations) and/or safe waiting areas.



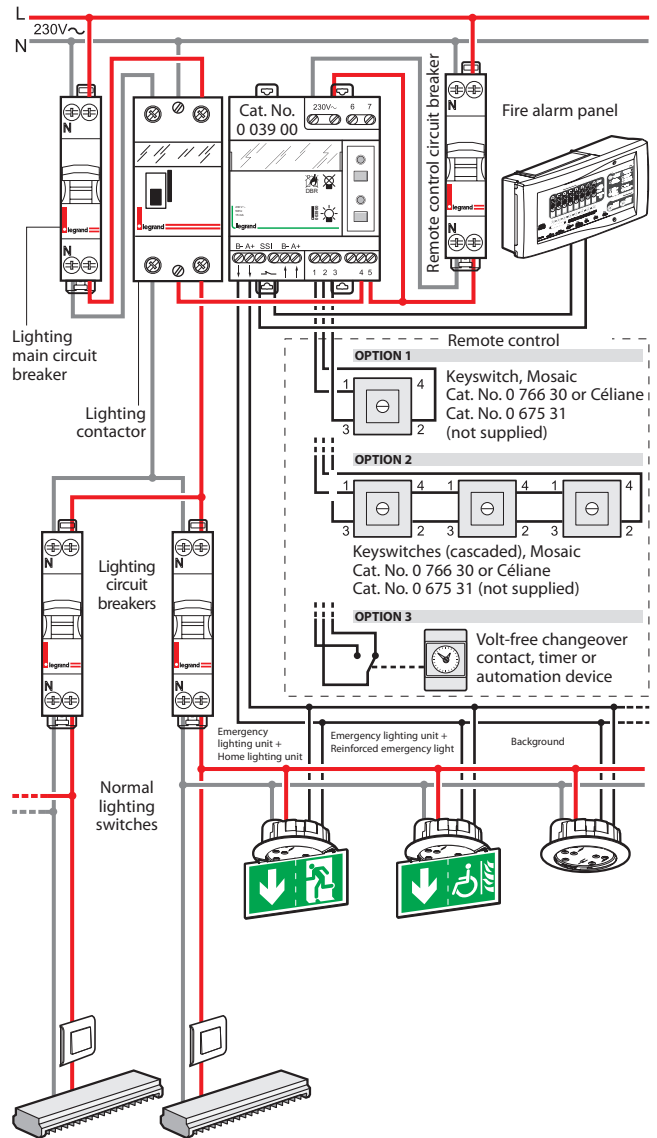
**Important:**  
In the event of fire alarm activation, remote control Cat. No. 0 039 00 memorises the alarm status for one hour to avoid accidentally setting the unit emergency lighting function to rest state [emergency lighting units + home lighting units], [emergency lighting units + reinforced emergency lights] if the main power supply fails again. The red LED signals the fire alarm status. If the fire alarm is reset too soon (<1 hour) (tests, false alarm, nuisance tripping), deactivate the remote control alarm status by pressing the button

**3. CONNECTION (CONTINUED)**

3.3.2 Setting an installation comprising several operating zones to rest state zone by zone

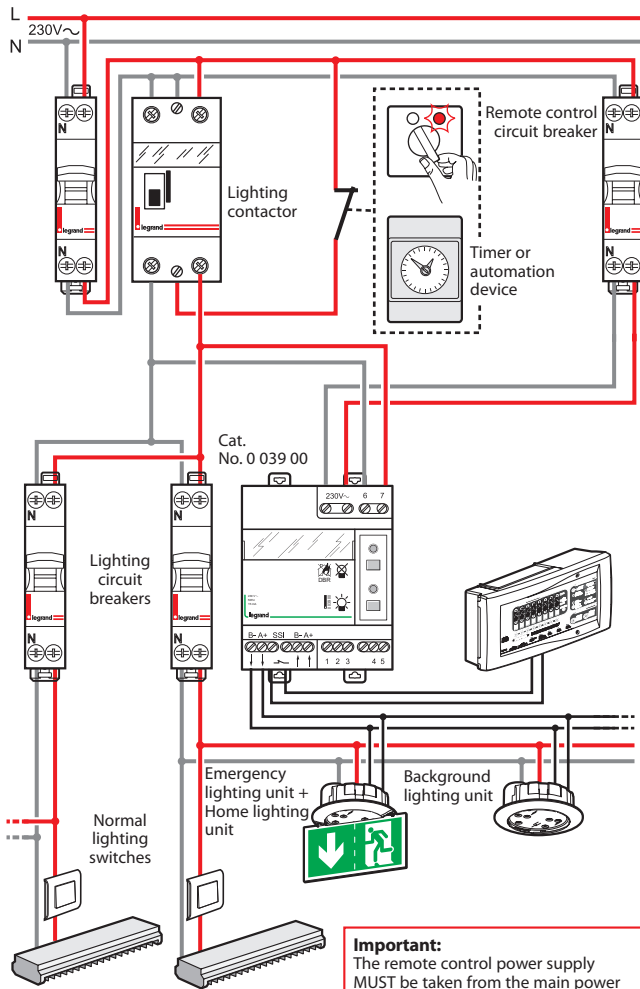


3.3 Switching off lighting and setting units to rest state remotely with keyswitch (Mosaic Cat. No. 0 766 30 not supplied) or by automation device



**3. CONNECTION (CONTINUED)**

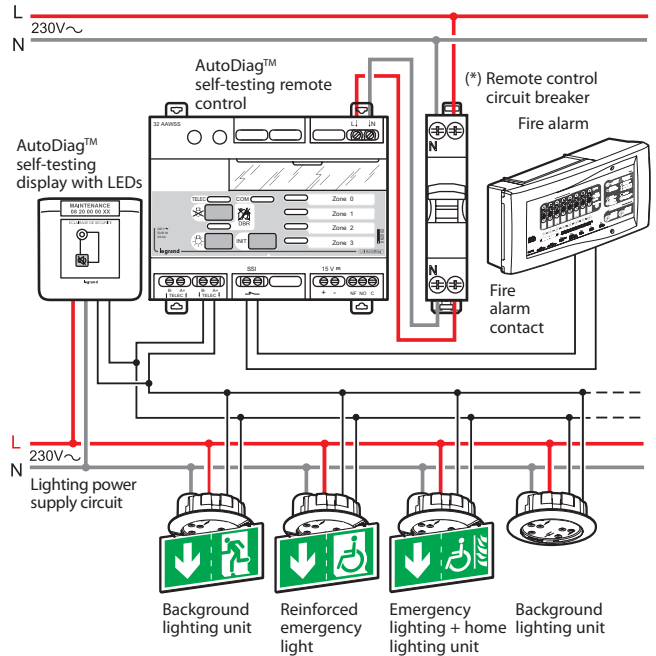
**■ 3.4 Setting units to rest state automatically after the lighting is switched off intentionally**



**Important:**  
The remote control power supply MUST be taken from the main power supply to the lighting circuits in order to avoid any risk of setting the units to rest state automatically if the power supply of these lighting circuits fails.

**■ 3.5 Connecting an AutoDiag™ installation**

With connection of FSS (required for self-contained emergency lighting + home lighting units and reinforced emergency lights).



(\*) The remote control power supply must be taken upstream of the normal lighting circuit protection devices. It must not come from a protected auxiliary power supply.

**4. USE**

**■ 4.1 Switch-on/Standby state**

The white emergency LED(s) come on at low intensity and the green unit status LED comes on.

Note: The green self-test indicator flashes for the first 28 hours.

**■ 4.2 Mains supply break/Emergency operation**


0 625 14/24/54/74: The green unit status LED goes off and the white emergency LEDs come on at higher intensity.

0 625 64: The white LED and the green unit status LED go off and all 4 emergency LEDs come on.

**■ 4.3 Setting to rest state via the remote control**

Cat. Nos. 0 039 00/01

**After the normal lighting is switched off intentionally:**

Pressing the  button sets the unit to rest state to prevent the battery discharging.

**Normal lighting switched back on:**

The unit automatically returns to standby.

**■ 4.4 Automatic checking of the unit status (self-testing system)**

This unit automatically checks its operating status.







**Once a week:**

Switches to emergency state and tests for 15 s, and tests switch-on and the light sources.

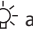

**Once every three months:**

Switches to emergency state for one hour and tests the battery standby power. Tests the light sources and the duration of the standby battery power.

**■ 4.5 Result of the automatic checks**

LEDs	Unit OK	Battery fault	Electronic fault
Green	 (steady or flashing)		
Yellow		 (steady)	 (rapid flashing)

The time of the tests is set at the time the unit is first switched on. The day of the test is chosen randomly in order to ensure that a minimum number of units are tested at the same time.

The time at which all the units are tested can be changed to the required time by simultaneously pressing the  and  buttons on the remote control.

This change of test time triggers a standby power test immediately or within 24 hours.

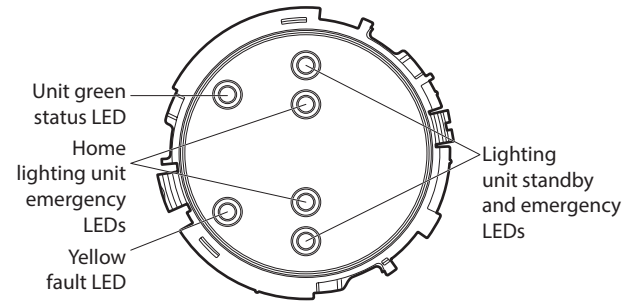
**■ 4.6 Stopping a test in progress**

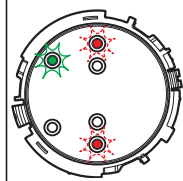
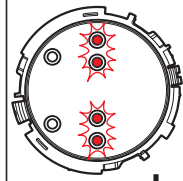
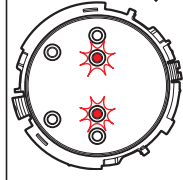
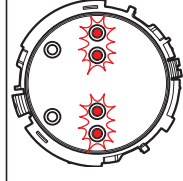
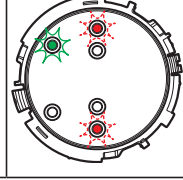
If a standby power test hinders operation, it can be stopped immediately. Press the OFF button on the remote control unit Cat. No. 0 039 00. The test is stopped and postponed until the following day.

**■ 4.7 Special cases**

When the unit has been switched off for more than 3 days, the tests are no longer carried out. The test cycle will resume after the unit is switched back on and the batteries have been recharged. The tests planned for the day the unit is switched back on are automatically postponed for 24 hours.

**■ 4.8 Operation of self-contained emergency lighting + home lighting unit Cat. No. 0 625 14 with a remote control module Cat. No. 0 039 00 connected to a fire alarm control panel**

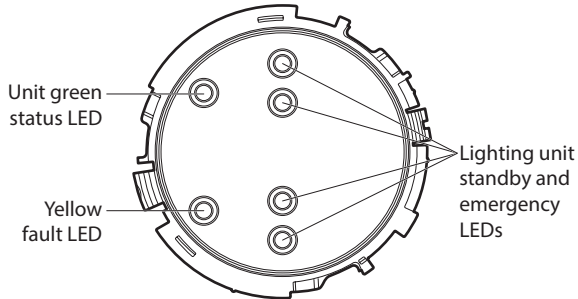


Mains power supply	Fire alarm	Unit status	Emergency function	Home function
Present	Absent		Standby	Standby
Absent	Absent		Backup	Backup
			Rest	Backup
Absent	Present		Backup	Backup
Present	Present or absent		Standby	Standby



**4. USE (CONTINUED)**

**■ 4.9 Operation of self-contained emergency lighting + reinforced emergency light Cat. No. 0 625 54 with a remote control module Cat. No. 0 039 00 connected to a fire alarm control panel**



Mains power supply	Fire alarm	Unit status	Emergency function
Present	Absent		Standby
Present	Present		Backup with flux dimming between 45 lumens and 120 lumens
Absent	Present or absent		Backup with flux dimming between 45 lumens and 120 lumens

**5. MAINTENANCE**

**■ 5.1 Routine maintenance**

**• Safety Regulations for Public Buildings (articles EL 18 and EC 13)**

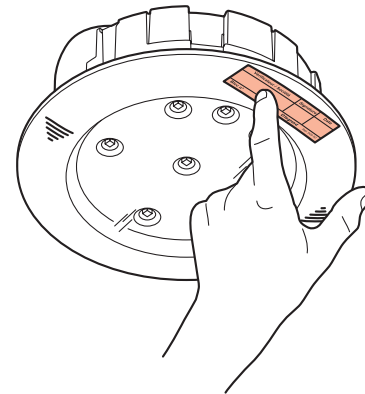
Routine maintenance of self-contained emergency lighting units is mandatory in public buildings.

It can be carried out in accordance with the provisions of standard NF C 71-830.

The user must ensure that the lighting units are regularly checked and serviced.

The user must ensure that the annual maintenance operations are carried out by a qualified person.

After every annual maintenance operation, the qualified person must affix a new maintenance label and fill it in.



This maintenance label (Cat. No. 0 609 01) must be affixed to each lighting unit in a position where it can be seen, and marked with the date on which the unit is returned to service.

**• Operation (article EC 14)**

The emergency lighting must be set to standby state during operating periods.

The emergency lighting must be set to rest or off state when the normal lighting installation is switched off intentionally.

The use of a hard-wired remote control Cat No. 0 039 00 and keyswitch in accordance with wiring diagram 3.2 enables the units to be set to rest state at the same time as the normal lighting is switched off when the rooms or areas are not in use.

The user must regularly check the following:

**Once a month:**

- That the unit switches to operating position if the normal power supply fails, and that all the lights come on (operation must be strictly limited to the time required to carry out the visual check). These checks can be carried out by checking that the green self-test indicator is on on all the units in the installation.

- The effectiveness of the remote command to switch to rest position and the automatic return to standby position when the normal power supply is re-established.

**Once every six months:**

- At least one hour's standby power. These checks can be carried out by checking that the green self-test indicator is on on all the units in the installation.

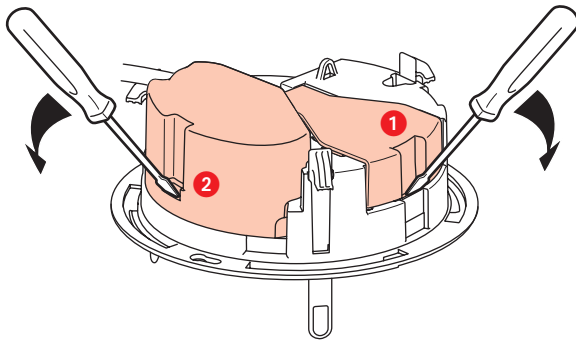
**5. MAINTENANCE (CONTINUED)**

■ **5.2 spare parts**  
• **Batteries**

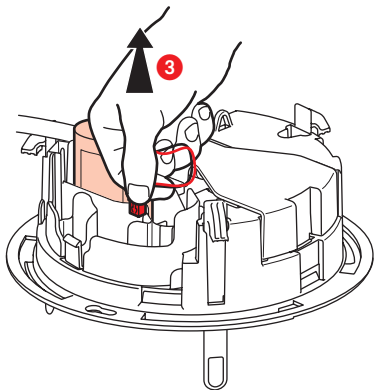
Unit Cat. No.	Battery Cat. No.	Type
0 625 24	0 610 87	Ni Cd 0.8 Ah – 2.4 V AA
0 625 74		
0 625 14	2 x 0 610 87	
0 625 54	0 610 90	Ni Cd 1.5 Ah - 2.4 V Cs
0 625 64	2 x 0 610 88	NiMH 2.2 Ah - 2.4 V Cs

■ **5.3 Replacing the batteries**

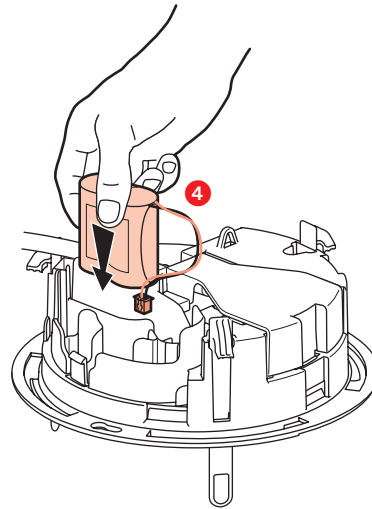
The batteries must be replaced when the self-contained unit can no longer provide its rated operating time.



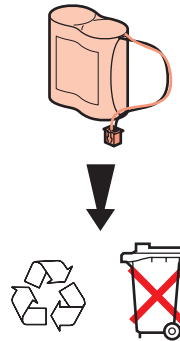
- 1 First remove the cover protecting the connector.
- 2 Remove the cover protecting the batteries with a screwdriver.



- 3 Disconnect the batteries from the unit and remove them.
- Legrand distribution partners take back used lighting units and batteries. When the batteries have been changed, replace the maintenance label, marking on it the date on which the unit was returned to service.



- 4 Replace with new batteries.



When the batteries have been replaced, mark the date on which the unit was returned to service on the new maintenance label.

---

## 6. COMPLIANCE AND APPROVALS

NF C 71 800: French standard "Performance of self-contained emergency evacuation lighting units in public buildings and work premises covered by regulations"

Compliance with this standard is mandatory for installing self-contained emergency evacuation lighting units in France.

NF C 71 820: French standard "Automatic test system for emergency lighting equipment"

NF C 71 801: French standard "Performance of self-contained emergency background lighting units"

NF C 71 805: French standard "Performance of self-contained emergency home lighting units"

UTE C 71 803: Practical guide "Self-contained emergency home lighting unit for sleeping accommodation"

UTE C 71 806: Rules applicable to the use of NiMh batteries in self-contained emergency lighting units

EN 60 598-2-22: European standard "Luminaires: specific rules. Luminaires for emergency lighting"

EN 60 598-1: European standard "Luminaires"

The "NF AEAS performance SATI" mark certifies compliance with these standards.

NF 413 NF ENVIRONNEMENT Emergency lighting units The "NF environnement" mark certifies compliance with this standard.

EN 50172: European standard "Emergency escape lighting systems"

EN 1838: European standard "Lighting applications – Emergency lighting"

### **Electromagnetic effects: EMC**

EN 61547: European standard "EMC immunity requirements"

### **Emission**

- EN 55015 (limits and methods of measurement of electrical lighting and similar equipment)

- EN 55022 (radiated interference) class B

### **Immunity**

- EN 61000-4-2 (electrostatic discharges) criterion B 4 kV (contact), 8 kV (air)

- EN 61000-4-3 (electromagnetic fields) criterion A 10 V/m

- EN 61000-4-4 (fast transients) criterion B 4 kV on network and 1 kV by coupling

- EN 61000-4-5 (shock waves) 2 kV in common mode and 1 kV in residual current mode criterion B

- EN 61000-4-6 (injected currents immunity) criterion A