

ENERGY EFFICIENT

THIN LINEAR

FEATURED PRODUCT



LED3WCW **NEW**



LED3WB **NEW**



LED3WG **NEW**



LED3WR **NEW**

ULTRA THIN LINEAR LED STRIP LIGHTS **NEW**

3 watt Linear strip lights

3528 high brightness SMD LED's. Connector (LEDFCON), 1m power lead (LED1000) & 2 x mounting clips (LEDFCLIP) supplied with fitting. 24v 24 watt power adaptor (not supplied with fitting – product code LEDADP24/36 see page 87). Dimmable only with LEDDIMMER (not supplied with fitting - see page 87). Lux level - 200 Lux at 500mm. L 300mm x W 33mm x D 8mm, 90° beam angle

Code	Description	Box QTY (Inner/Outer)	Price List Page No.
LED3WCW	Cool white - 6000k	1/40	30
LED3WWW	Warm white - 3000k	1/40	30
LED3WB	Blue	1/40	30
LED3WG	Green	1/40	30
LED3WR	Red	1/40	30



LED5WB **NEW**



LED5WG **NEW**



LED5WR **NEW**

5 watt linear strip lights **NEW**

3528 high brightness SMD LED's. Connector (LEDFCON), 1m power lead (LED1000) & 2 x mounting clips (LEDFCLIP) supplied with fitting. 24v 24 watt power adaptor (not supplied with fitting – product code LEDADP24/36 see page 87). Dimmable only with LEDDIMMER (not supplied with fitting - see page 87). Lux level - 300 Lux at 500mm. L 500mm x W 33mm x D 8mm, 90° beam angle

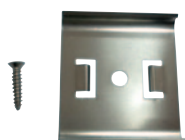
Code	Description	Box QTY (Inner/Outer)	Price List Page No.
LED5WCW	Cool white - 6000k	1/40	30
LED5WWW	Warm white - 3000k	1/40	30
LED5WB	Blue	1/40	30
LED5WG	Green	1/40	30
LED5WR	Red	1/40	30



All LED striplights are supplied complete with:



LEDFCON

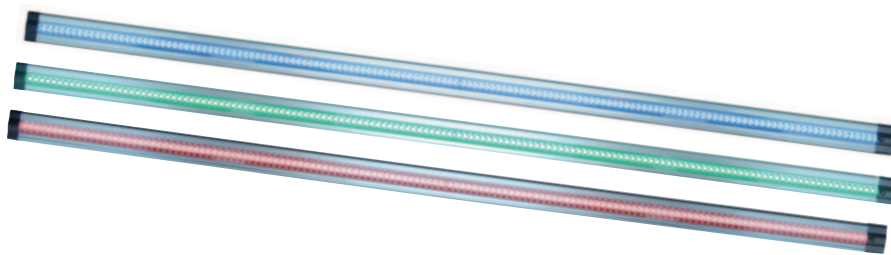


LEDFCLIP



LED1000

energy
efficient



11 watt linear strip lights

NEW

3528 high brightness SMD LED's. Connector (LEDICON), 1m power lead (LED1000) & 2 x mounting clips (LEDCLIP) supplied with fitting. 24v 24 watt power adaptor (not supplied with fitting – product code LEDADP24/36 see page 87). Dimmable only with LEDDIMMER (not supplied with fitting - see page 87). Lux level - 700 Lux at 500mm. L 1000mm x W 33mm x D 8mm, 90° beam angle

Code	Description	Box QTY (Inner/Outer)	Price List Page No.
LED11WCW	Cool white - 6000k	1/40	30
LED11WWW	Warm white - 3000k	1/40	30
LED11WB	Blue	1/40	30
LED11WG	Green	1/40	30
LED11WR	Red	1/40	30



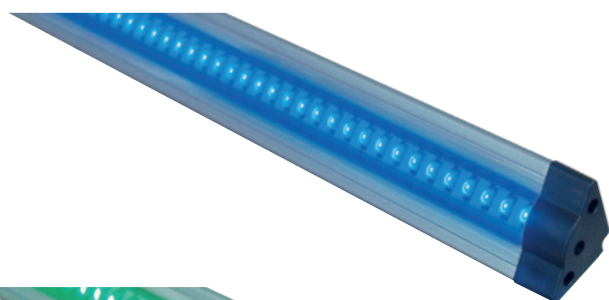
**LAMPS
& TUBES**
SEE PAGE 140

ENERGY EFFICIENT

TRIANGULAR



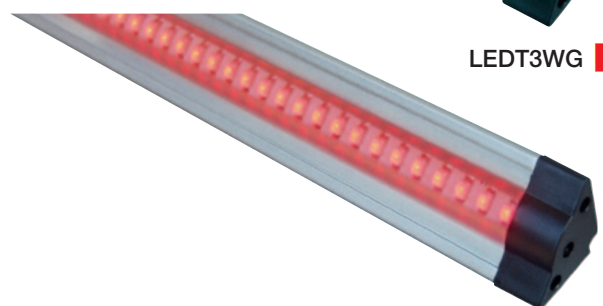
LEDT3WCW **NEW**



LEDT3WB **NEW**



LEDT3WG **NEW**



LEDT3WR **NEW**

All LED striplights to be used in conjunction with a power adaptor product code LEDADP24/36.



LEDADP24/36

ULTRA COMPACT TRIANGULAR LED STRIP LIGHTS **NEW**

3 watt triangular strip lights

3528 high brightness SMD LED's. Connector (LEDTCON), 1m power lead (LED1000) & 2 x mounting clips (LEDTCLIP) supplied. 24v 24 watt power adaptor (not supplied with fitting - product code LEDADP24/36 see page 87). Dimmable only with LEDDIMMER (not supplied with fitting- see page 87). Lux level - 200 Lux at 500mm.

L 300mm x W 33mm x H 20mm, 90° beam angle

Code	Description	Box QTY (Inner/Outer)	Price List Page No.
LEDT3WCW	Cool white - 6000k	1/40	30
LEDT3WWW	Warm white - 3000k	1/40	30
LEDT3WB	Blue	1/40	31
LEDT3WG	Green	1/40	31
LEDT3WR	Red	1/40	31

5 watt triangular strip lights **NEW**

Lux level - 300 Lux at 500mm.

L 500mm x W 33mm x H 20mm, 90° beam angle

Code	Description	Box QTY (Inner/Outer)	Price List Page No.
LEDT5WCW	Cool white - 6000k	1/40	30
LEDT5WWW	Warm white - 3000k	1/40	30
LEDT5WB	Blue	1/40	31
LEDT5WG	Green	1/40	31
LEDT5WR	Red	1/40	31

11 watt triangular strip lights **NEW**

Lux level - 700 Lux at 500mm.

L 1000mm x W 33mm x H 20mm, 90° beam angle

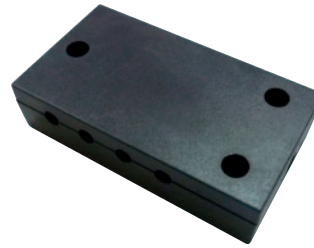
Code	Description	Box QTY (Inner/Outer)	Price List Page No.
LEDT11WCW	Cool white - 6000k	1/40	30
LEDT11WWW	Warm white - 3000k	1/40	30
LEDT11WB	Blue	1/40	31
LEDT11WG	Green	1/40	31
LEDT11WR	Red	1/40	31



LEDDIMMER **NEW**



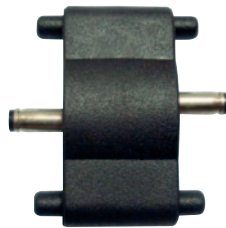
LEDADP24 / 36 **NEW**



LED8SPLIT **NEW**



LEDFCLIP **NEW**



LEDFCON **NEW**



LEDRACON **NEW**



LEDTCLIP **NEW**



LEDTCON **NEW**



LED100 / 250 / 1000 / 2500 **NEW**

Accessories



Code	Description	Box QTY (Inner/Outer)
LEDDIMMER	Electronic dimmer with memory Function	1/40
LEDADP24	24 watt 24v switching power adapter	1/10
LEDADP36	36 watt 24v switching power adapter	1/10
LED8SPLIT	PVC DC 8 way splitter	1/100
LEDFCLIP	Metal mounting clip for thin linear strip light	1/40
LEDFCON	PVC connector for additional thin linear strip lights	1/40
LEDRACON	PVC right angle connector for thin linear strip lights	1/100
LEDTCLIP	Metal mounting clip for triangular strip lights	1/40
LEDTCON	PVC connector for additional triangular linear strip lights	1/40
LED100	100mm power lead to connect additional linear strip lights	1/40
LED250	250mm power lead to connect additional linear strip lights	1/40
LED1000	1000mm power lead to connect additional linear strip lights	1/40
LED2500	2500mm power lead to connect additional linear strip lights	1/40