

Lamp Current (A): 3.2A
 Ignitor Voltage (Min.): 0.6KV
 Luminaire Rating: Enclosed
 Burning Position: Horizontal ±15°

HIT 400W/HOR/DU/4.5K

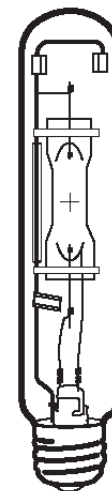
Product Number: 00321

Lamp Type: Dual Metal Halide

Control Gear: Mercury Ballast + Ignitor / HPS Gear

Performance Data

Light Output (Lumens @ 100 hours)	30000 / 37000
Lamp Lumens Per Watt	75 / 92
Rated Life (Hrs. @ 10 Hr. /Start)	15000
Correlated Colour Temperature (K)	4500 /4200
Chromaticity (CIE - X Y)	364, 371
Colour Rendering Index (CRI) or (Ra)	68
Typical Warm Up Time (Minutes)	3-5
Typical Hot Restart Time (Minutes)	5-10
Burning Position	Horizontal ±15°



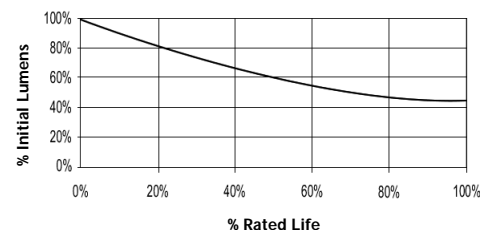
Physical Data / Requirements

Base Designation	E40
Bulb Designation	T46
Bulb Diameter (mm)	46
Max. Overall Length (mm)	285
Light Centre Length (mm)	175
Effective Arc Length (mm)	28
Max. Base Temperature (°C)	250
Max. Bulb Temperature (°C)	500
Luminaire Type	Enclosed
Socket Pulse Rating (KV)	4.5

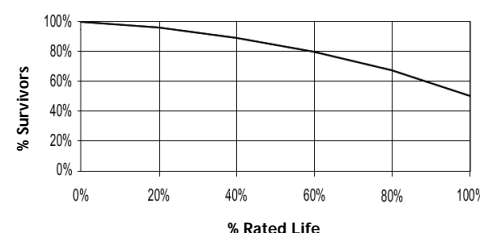
Lamp Electrical Data / Requirements

IEC Standard	-
Lamp Wattage (W)	400
Lamp Operating Voltage (V)	110
Lamp Operating Current (Amps)	3.2
Min. Open Circuit Voltage (RMS)	198
Min. Starting Pulse (Peak V)	600
Min. Pulse Width at 540V (microseconds)	260
Min. Pulse Rate Per ½ cycle	1
Pulse Position (Electrical Degrees)	60-90,, 240-270

Lumen Maintenance



Lamp Mortality



Revision: -

Notes:

The specification contains data about typical performance on 50Hz sine wave ballast at nominal power. Actual values may depend on ballast and applications. Complies with (CE), Low Voltage (CE), WEEE and RoHS Directives.

This lamp is also compatible with a 3.0-4.5kV ignitor

Electrical data shown is based on Mercury ballast option