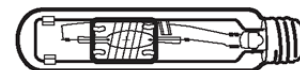


HIPT 250W/H75/LU/UVS/T52/4K
Product Number: 00249
Lamp Type: Open Rated Horizontal Tubular Lamps

Control Gear: HPS Ballast + Ignitor

Performance Data

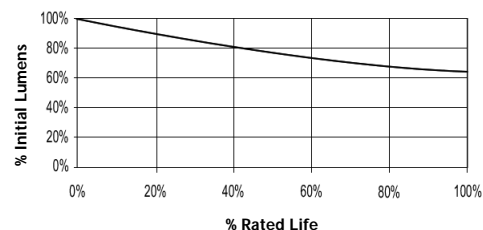
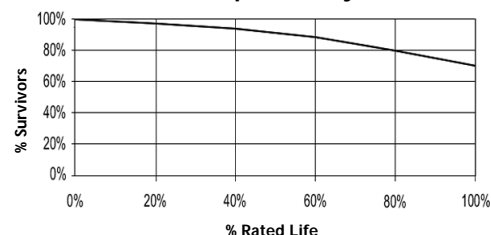
Light Output (Lumens @ 100 hours)	20000
Lamp Lumens Per Watt	80
Rated Life (Hrs. @ 10 Hr. /Start)	20000
Correlated Colour Temperature (K)	4000
Chromaticity (CIE - X Y)	385, 390
Colour Rendering Index (CRI) or (Ra)	65
Typical Warm Up Time (Minutes)	2-3
Typical Hot Restart Time (Minutes)	3-5
Burning Position	Horizontal±75°


Physical Data / Requirements

Base Designation	E40
Bulb Designation	T52
Bulb Diameter (mm)	52
Max. Overall Length (mm)	211
Light Centre Length (mm)	132
Effective Arc Length (mm)	30
Max. Base Temperature (°C)	250
Max. Bulb Temperature (°C)	500
Luminaire Type	Open/Enclosed
Socket Pulse Rating (KV)	4.5

Lamp Electrical Data / Requirements

IEC Standard	-
Lamp Wattage (W)	250
Lamp Operating Voltage (V)	95
Lamp Operating Current (Amps)	3.1
Min. Open Circuit Voltage (RMS)	198
Min. - Max. Starting Pulse (Peak V)	2800-4500
Min. Pulse Width at 2700V (microseconds)	1
Min. Pulse Rate Per ½ cycle	1
Pulse Position (Electrical Degrees)	60-90, 240-270

Lumen Maintenance

Lamp Mortality

Revision: 09/01/2008

Notes:

The specification contains data about typical performance on 50Hz sine wave ballast at nominal power. Actual values may depend on ballast and applications. Complies with (CE), Low Voltage (CE), WEEE and RoHS Directives.