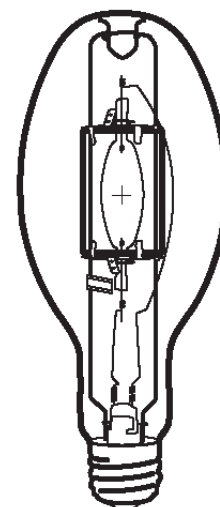


**HIPE 400W/V/LU/UVS/4K**
**Product Number: 10077**
**Lamp Type:** White-Lux Plus

**Control Gear:** HPS Ballast + Ignitor

**Performance Data**

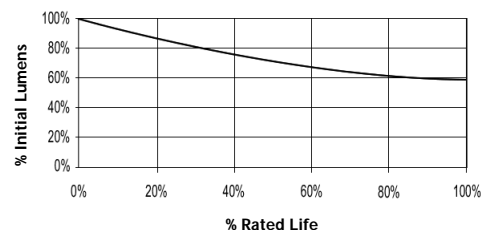
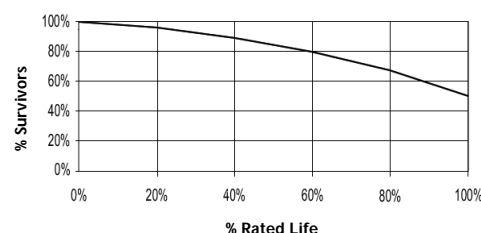
Light Output (Lumens @ 100 hours)	42000
Lamp Lumens Per Watt	95
Rated Life (Hrs. @ 10 Hr. /Start)	20000
Correlated Colour Temperature (K)	4000
Chromaticity (CIE - X Y)	385, 390
Colour Rendering Index (CRI) or (Ra)	65
Typical Warm Up Time (Minutes)	2-3
Typical Hot Restart Time (Minutes)	5-8
Burning Position	Vertical±15°


**Physical Data / Requirements**

Base Designation	E40
Bulb Designation	E120
Bulb Diameter (mm)	120
Max. Overall Length (mm)	296
Light Centre Length (mm)	182
Effective Arc Length (mm)	43.9
Max. Base Temperature (°C)	250
Max. Bulb Temperature (°C)	400
Luminaire Type	Open/Enclosed
Socket Pulse Rating (KV)	4.5

**Lamp Electrical Data / Requirements**

IEC Standard	-
Lamp Wattage (W)	440
Lamp Operating Voltage (V)	120
Lamp Operating Current (Amps)	4
Min. Open Circuit Voltage (RMS)	198
Min. - Max. Starting Pulse (Peak V)	2800-4500
Min. Pulse Width at 2500V (microseconds)	1
Min. Pulse Rate Per ½ cycle	1
Pulse Position (Electrical Degrees)	60-90, 240-270

**Lumen Maintenance**

**Lamp Mortality**

**Revision:** 28/02/2006

**Notes:**

The specification contains data about typical performance on 50Hz sine wave ballast at nominal power. Actual values may depend on ballast and applications. Complies with (CE), Low Voltage (CE), WEEE and RoHS Directives.