


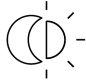





# sensIQ S

EVO Anthracite  
 EAN 4007841 056650  
 Article number 056650



		2000 W					Teach		5 years
<small>infrared sensor 3 x 100°</small>	<small>3 zones scalable 2-20m</small>	<small>2000 W max. (LED-ready)</small>	<small>IP54</small>	<small>2 - 2000 lux daylight operation</small>	<small>5 sec - 15 min</small>	<small>ideal 2 - 5 m</small>	<small>Teach mode</small>	<small>energy saving</small>	<small>manufacturer's warranty steinel-professional.de/garantie</small>

## Function description

The evolution of perfection. The sensIQ S is just as perfect as its larger role model. For indoors and outdoors, ideal for building entrances, loading bays, for mounting heights of up to 5 m, quadruple sensor system for optimum surveillance over 3x100° coverage angle, 20 m reach (tangential), reach setting to the accuracy of a metre in 3 independent directions. Remote control and corner wall mount bracket included.

## Technical specifications

Dimensions (L x W x H)	128 x 114 x 74 mm	LED lamps > 2 W < 8 W	300 W
With motion detector	Yes	LED lamps > 8 W	600 W
Manufacturer's Warranty	5 years	Capacitive load in µF	176 µF
Settings via	Remote control, Potentiometers, Smart Remote	Power supply, detail	500 VA max., 120 V
With remote control	Yes	Technology, sensors	passive infrared, Light sensor
Version	Anthracite	Mounting height	2,00 – 5,00 m
PU1, EAN	4007841056650	Mounting height max.	5,00 m
Type	Motion detectors	Optimum mounting height	2 m
Application, place	Indoors, Outdoors	Detection angle	300 °
Application, room	multi-storey / underground car park, outdoors, warehouse, front door, all round the building, courtyard & driveway, Indoors	Angle of aperture	180 °
Colour	Anthracite	Sneak-by guard	Yes
Colour, RAL	7016	Capability of masking out individual segments	Yes
Includes corner wall mount	Yes	Electronic scalability	No
Installation site	wall, corner	Mechanical scalability	Yes
		Reach, radial	r = 4 m (42 m <sup>2</sup> )
		Reach, tangential	r = 20 m (1047 m <sup>2</sup> )

# sensIQ S

EVO Anthracite  
 EAN 4007841 056650  
 Article number 056650



## Technical specifications

Installation	Surface wiring, Wall, corner
IP-rating	IP54
Ambient temperature	-20 – 50 °C
Material	Plastic
Mains power supply	100 – 240 V / 50 – 60 Hz
Switching output 1, resistive	2000 W
Switching output 1, number of LEDs / fluorescent lamps	50 pcs.
Fluorescent lamps, electronic ballast	1500 W
Fluorescent lamps, uncorrected	1000 VA
Fluorescent lamps, series-corrected	700 VA
Fluorescent lamps, parallel-corrected	1000 VA
Switching output 1, low-voltage halogen lamps	1000 VA
LED lamps < 2 W	100 W

Switching zones	1360 switching zones
Functions	Normal / test mode, Manual ON / ON-OFF
Twilight setting	2 – 1000 lx
Time setting	5 s – 15 Min.
Basic light level function	No
Main light adjustable	No
Twilight setting TEACH	Yes
Constant-lighting control	No
Interconnection	Yes
Type of interconnection	Master/master
Interconnection via	Cable

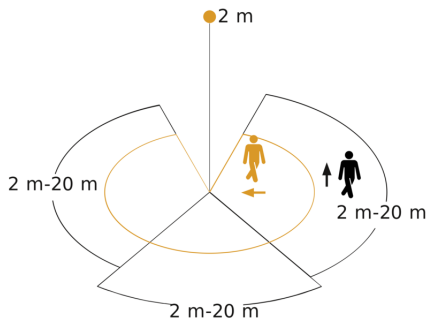
## Accessories

EAN 4007841 007638	Remote control RC9
EAN 4007841 009151	Remote control Smart Remote

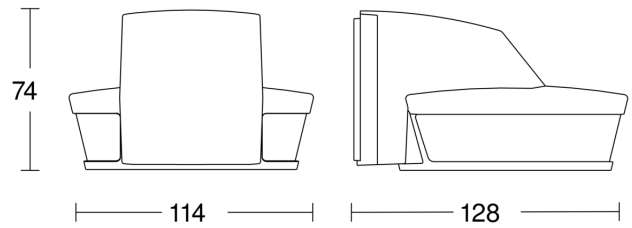
# sensIQ S

EVO Anthracite  
 EAN 4007841 056650  
 Article number 056650

## Detection Zone

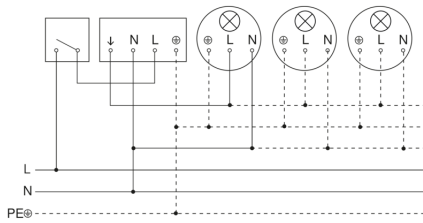


## Dimension Drawing

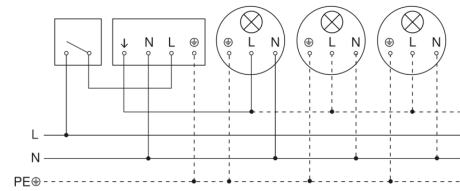


Possible mounting height: 2,00 m - 5,00 m  
 Orange: radial  
 Black: tangential  
 3 scalable zones

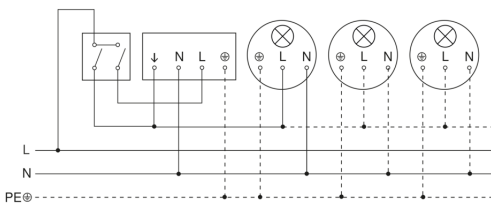
## Light without neutral conductor



## Light with neutral conductor



## Connection using two-circuit switch for manual and automatic operation



## Connection of 4-fold push-button coupler to DALI2 APC

