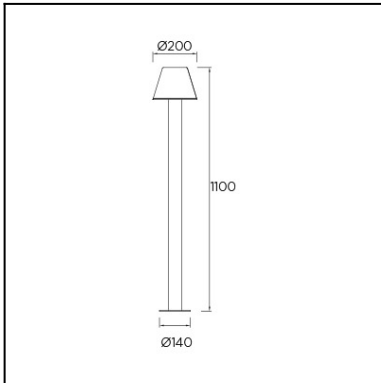


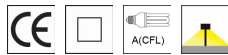


The photograph may not match the reference exactly. Please read the product description to identify the finish.



TECHNICAL CHARACTERISTICS

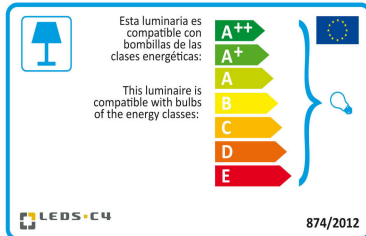
Type:	Beacon
Adjustable:	Adjustable $\pm 15^\circ$ on the vertical axis
IP Protection degrees:	IP54
Light source 1:	1 x E27 MAX 18W
Voltage / Frequency:	220-240V/50-60Hz
Warranty (Years):	2
Units per box:	4
Net Weight (Kg):	1.135
EAN:	8435381424671



MATERIALS / FINISHES

Structure material:	Polypropylene	Diffuser material:	Polycarbonate
Structure finish:	Black	Diffuser finish:	Matt opal

[Download photometric file .ldt / .ies](#)

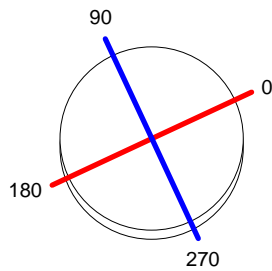


[Click on image to download energy label](#)

Luminaire		Measur.		Lamp			
Code	55-9848-05-M1	Code	55-9848-05-M1	Code	GENIE ESAVER 18W/827		
Name	Baliza SMILE 1x18W E27 CFL	Name	Baliza SMILE 1x18W E27 CFL	Number	1		
Line	- LEDS-C4	Date	17-09-2015	Position	Universal		
Luminaire Flux	68.78 lm	Luminaire Power	18.00 W	Efficacy	3.82 lm/W	Efficiency	6.25%
Lamps Flux	1100.00 lm	Maximum value	28.51 cd	Position	C=75.00 G=35.00	CG Double Symmetrical	
Round Luminaire		Diam.	200 mm	Height	140 mm		
Round Luminous Area		Diam.	200 mm	Height	0 mm		
Horizontal Luminous Area	0.031416 m2			Emitting area on Plane 180°	0.000000 m2		
Emitting area on Plane 0°	0.000000 m2			Emitting area on Plane 270°	0.000000 m2		
Emitting area on Plane 90°	0.000000 m2			Glare area at 76°	0.007600 m2		
Coordinate system	CG			Symmetry Type	Double Symmetrical		
Date	17-09-2015			Maximum Gamma Angle	180		
Measurement Distance	6.44			Measurement Flux	962.00 lm		
Operator	Asselum T2			Source voltage	230.00 V		
Temperature	25.00 °C			Source current	Prc		
Humidity	48.00 %			Photocell			
Notes							

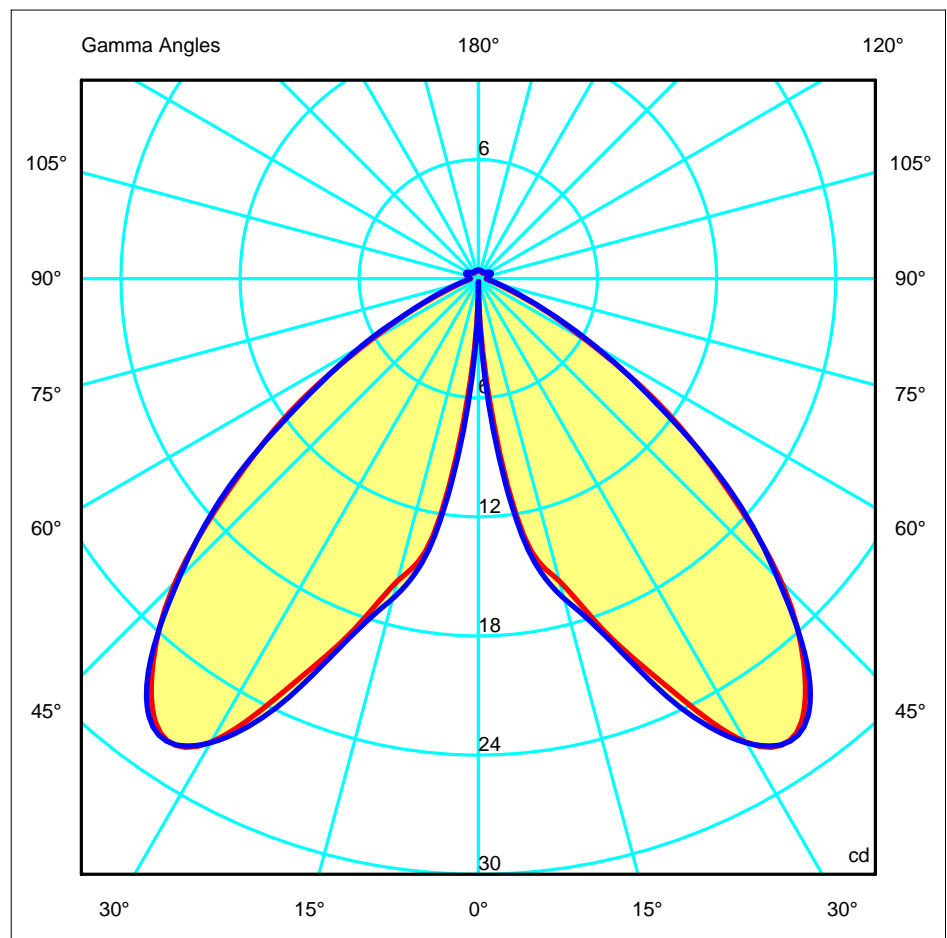
Luminaire Lamps						
Line	Code	Name	Flux [lm]	Pow. [W]	Q.ty	
PHILIPS 2005 ILCOS FBT,G,C,FSQ	GENIE ESAVER 18W/827	GENIE ESAVER 18W/827 E27	1100.00	18.00	1	
C.I.E.	55 91 98 95 6	D DIN 5040	A41			
F UTE	0.06 D	B NBN	BZ 4 / 1 / BZ 3			

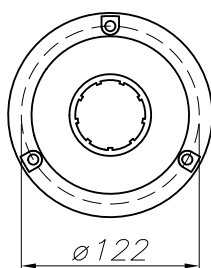
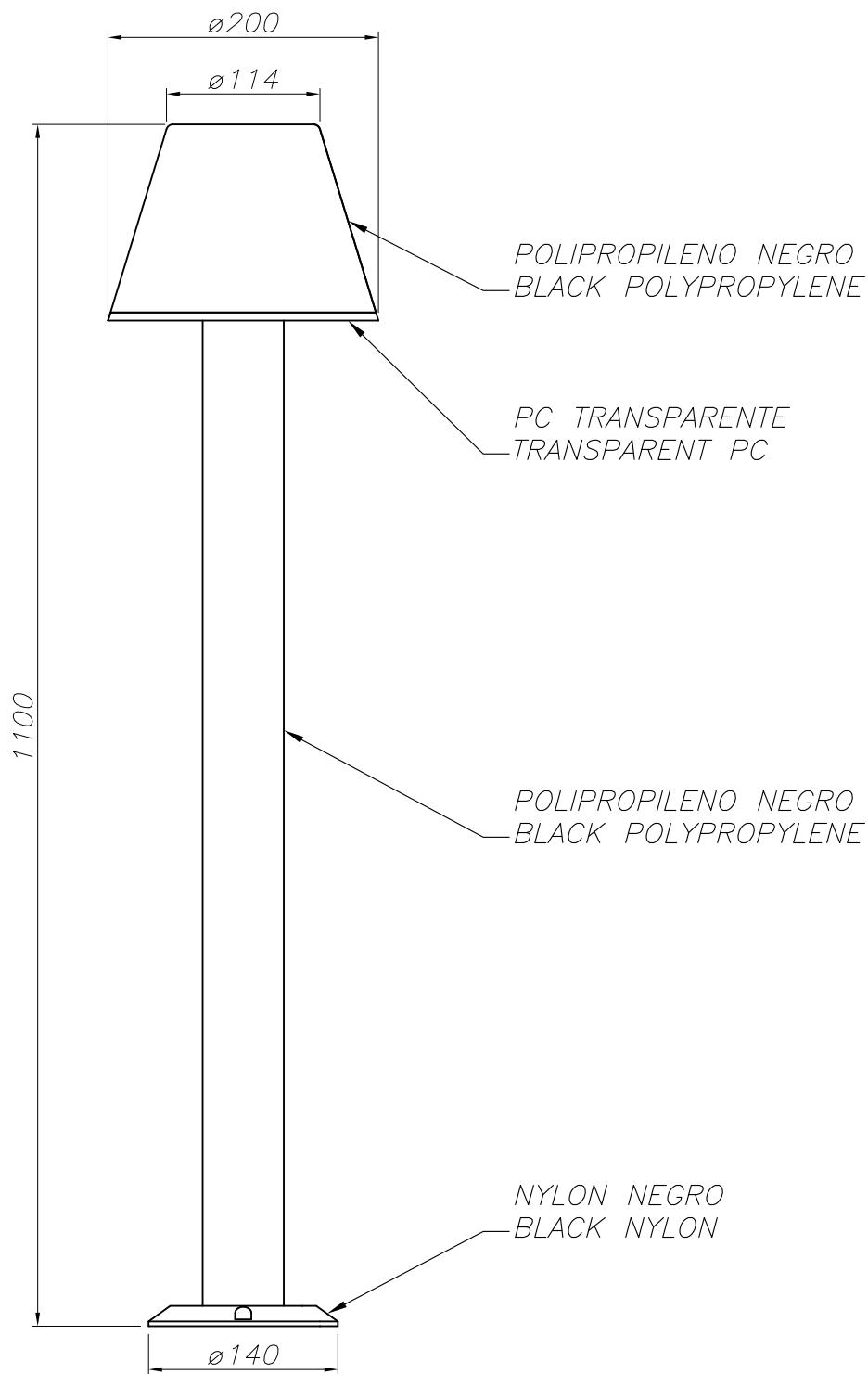
Diam=200mm



C Halfplanes
 180.0 — 0.0
 270.0 — 90.0

ULOR 0.29 %
 DLOR 5.96 %
 RN 4.66 %





PLANTILLA DE INSTALACIÓN
INSTALLATION TEMPLATE

