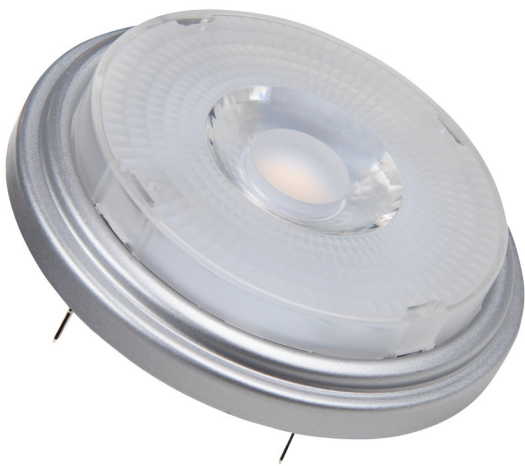


# PRODUCT DATASHEET

## PPRO AR111 50 24° 7.3 W/3000K G53

PARATHOM PRO AR111 | Low-voltage LED reflector lamps AR111 with retrofit pin base



---

### AREAS OF APPLICATION

- Shops and exhibition rooms
- Domestic applications
- Commercial applications
- Accent lighting
- Outdoor use in outdoor luminaires only (minimum IP65)

---

### PRODUCT BENEFITS

- Quick, simple and safe replacement without rewiring
- Design, dimensions, luminous flux comparable to an incandescent or halogen lamp
- Low maintenance costs thanks to long lifetime
- No UV and near-IR radiation in the light beam
- Stepless dimming
- Very high dimmer compatibility, see also [www.ledvance.com/dim](http://www.ledvance.com/dim)
- Compatible with many common conventional and electronic control gears (see also compatibility list)
- Instant 100 % light, no warm-up time

---

### PRODUCT FEATURES

- LED alternative to low voltage halogen lamps
- Dimmable
- Base: G53
- Excellent color rendering ( $R_a : 97$ )



– Lifetime: up to 40,000 h

## TECHNICAL DATA

### Electrical data

Rated wattage	7.30 W
Nominal wattage	7.30 W
Nominal voltage	12 V
Claimed equiv. conventional lamp power	50 W
Max. lamp no. on circuit break. 10 A (B)	6
Max. lamp no. on circuit break. 16 A (B)	10
Operating frequency	50...60 Hz
Power factor $\lambda$	0.60

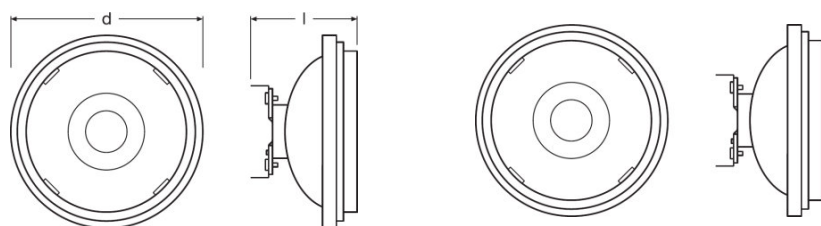
### Photometrical data

Nominal luminous flux	450 lm
Rated luminous flux	450 lm
Lumen main.fact.at end of nom.life time	0.70
Light color (designation)	Warm White
Color temperature	3000 K
Luminous flux	450 lm
Color rendering index Ra	97
Standard deviation of color matching	$\leq 4$ sdcn
Rated color temperature	3000 K
Nominal useful luminous flux 90°	450 lm
Rated useful luminous flux 90°	450 lm
Rated peak intensity	1600 cd

### Light technical data

Beam angle	24 °
Warm-up time (60 %)	< 0.10 s
Starting time	< 0.1 s
Nominal beam angle	24 °
Rated beam angle (half peak value)	24.00 °

Dimensions & weight



<b>Overall length</b>	62.0 mm
<b>Diameter</b>	111.0 mm
<b>Outer bulb</b>	AR111
<b>Length</b>	62.0 mm
<b>Maximum diameter</b>	111.0 mm

Temperatures & operating conditions

<b>Ambient temperature range</b>	-20...+40 °C
<b>Maximum temperature at tc test point</b>	86 °C

Lifespan

<b>Nominal lamp life time</b>	40000 h
<b>Rated lamp life time</b>	40000 h
<b>Number of switching cycles</b>	100000

Additional product data

<b>Base (standard designation)</b>	G53
<b>Mercury content</b>	0.0 mg
<b>Mercury-free</b>	Yes
<b>Show WEEE picto</b>	Yes
<b>Product remark</b>	All technical parameters apply to the entire lamp/Due to the complex production process for light-emitting diodes, the typical values shown for the technical LED parameters are purely statistical values that do not necessarily match the actual technical parameters of each individual product, which can vary from the typical value

Capabilities

<b>Dimmable</b>	Yes
-----------------	-----

Certificates & standards


<b>Energy efficiency class</b>	A
<b>Energy consumption</b>	8 kWh/1000h

## Country-specific categorizations

<b>Order reference</b>	LPAR111 5024 7,
------------------------	-----------------

## LOGISTICAL DATA

Product code	Packaging unit (Pieces/Unit)	Dimensions (length x width x height)	Gross weight	Volume
4058075448483	Folding carton box 1	113 mm x 66 mm x 113 mm	186.00 g	0.84 dm <sup>3</sup>
4058075448490	Shipping carton box 6	238 mm x 208 mm x 123 mm	1290.00 g	6.09 dm <sup>3</sup>

The mentioned product code describes the smallest quantity unit which can be ordered. One shipping unit can contain one or more single products. When placing an order, for the quantity please enter single or multiples of a shipping unit.

## REFERENCES / LINKS

For dimming conformity see

▶ [www.ledvance.com/dim](http://www.ledvance.com/dim)

For Guarantee see

▶ [www.ledvance.com/guarantee](http://www.ledvance.com/guarantee)

For further products and actual information concerning LED lamps see

▶ [www.ledvance.com/ledlamps](http://www.ledvance.com/ledlamps)

Further information see

▶ [www.ledvance.com/low-voltage-ledlamps](http://www.ledvance.com/low-voltage-ledlamps)

## DISCLAIMER

Subject to change without notice. Errors and omission excepted. Always make sure to use the most recent release.