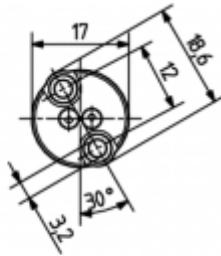
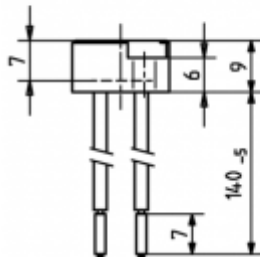


# Lampholders for low voltage halogen lamps

25.104.3521

G4 / Connector GZ4



colour	pkg.	wt.	part no.
anthracite	500	8 g	25.104.3521.90

Connection: Rear cable entry

Wires: Cu, tin-plated, 0.75 mm<sup>2</sup>, with ferrule,  
Insulation: Silicone (max. 180° C), Free cable  
entry: 14.0 mm

Housing: Ceramic / PPS  
Contacts: Ni

- The method of wiring must be such that no stress or bending motions will be transferred to the contacts, thus reducing the contact / pressure on the lamp pins.
- Other versions on request.

T 240	10 A 50 V
-------	--------------