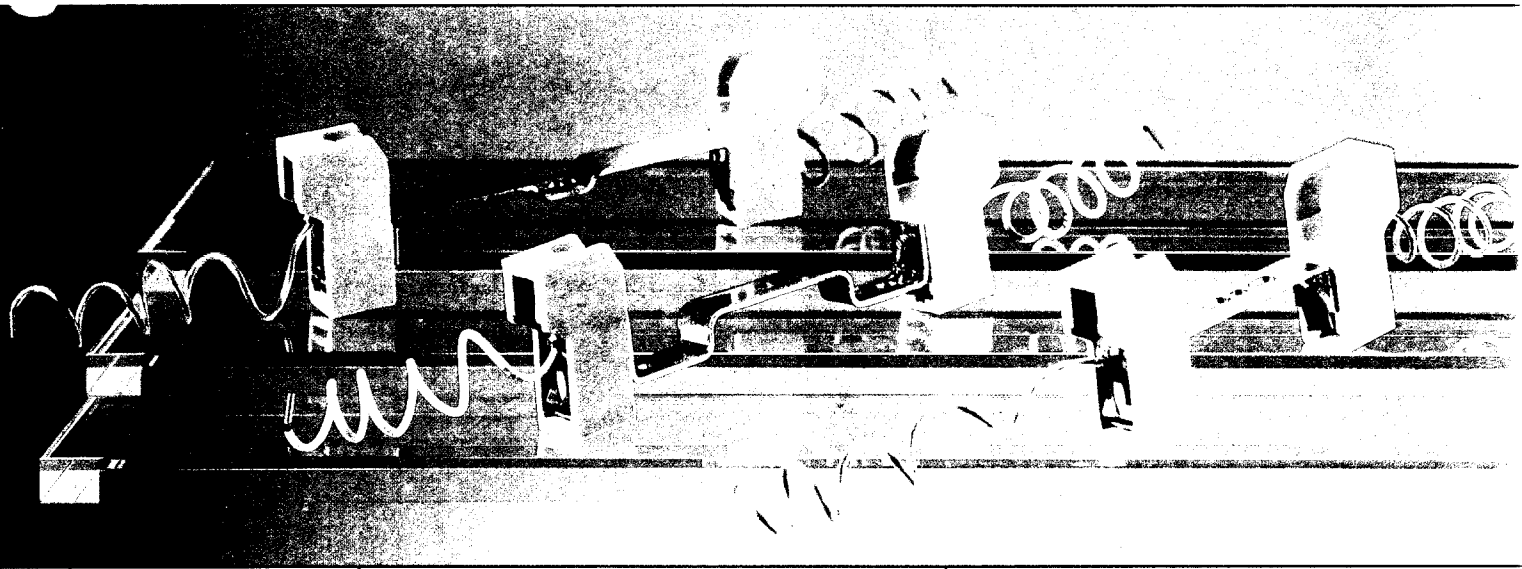


# Halogen twin lampholders R 7 s



## 25.803

These products have been designed according to the appropriate national and international specifications. The choice of product and correct technical embodiment is the responsibility of the user. More precise information available on request. We reserve the right to modify products.

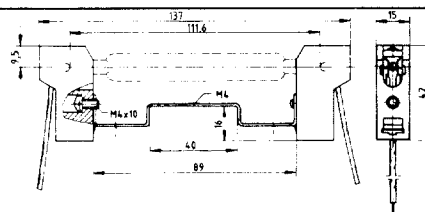
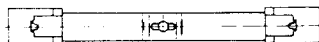
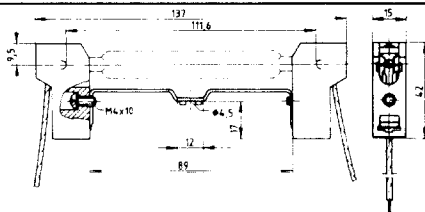
**Rating 6 A; 250 V**

**Housing steatite  
Contact pin copper with brazed silver cap**

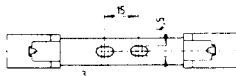
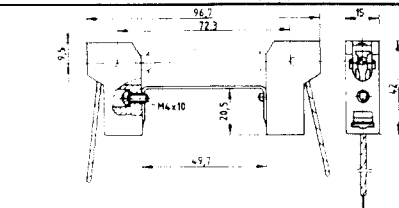
**To ensure the correct spacing between contacts, the lampholders must be fixed.**

Wires: nickel plated copper 0,75 mm<sup>2</sup>, insulation PTFE 250°C or FEP 200°C, with terminals free cable length 220 mm

The wires used with the tab terminal types must be suitable for the application.



**Screw fixing** pkg. wt. partno..  
contact centre 114.2 mm  
**cable insulation PTFE** length approx. 220 mm 125 63g **25.803.3821.00**  
**cable insulation FEP** length approx. 220 mm 125 63g **25.803.3812.00**



**Screw fixing**  
contact centre 114.2 mm  
**cable insulation PTFE** length approx. 220 mm 125 63g **25.803.3814.00**  
**RS 171-001**

**Screw fixing**  
contact centre 74.9 mm  
**cable insulation PTFE** length approx. 220 mm 125 56g **25.803.3609.00**  
**cable insulation FEP** length approx. 220 mm 125 56g **25.803.3603.00**