



UVB - UVD

The UV drain valves and breathers are normally used in the chemical and petrochemical plants, off-shore platforms, refineries and any other industry where hazardous atmospheres (gas and combustible dust) are potentially present.

The drain valves and breathers are specially recommended for tropical environment where the phenomenon of water condensation mixed with chemical agents is the first cause of corrosion of electrical components inside the enclosures.



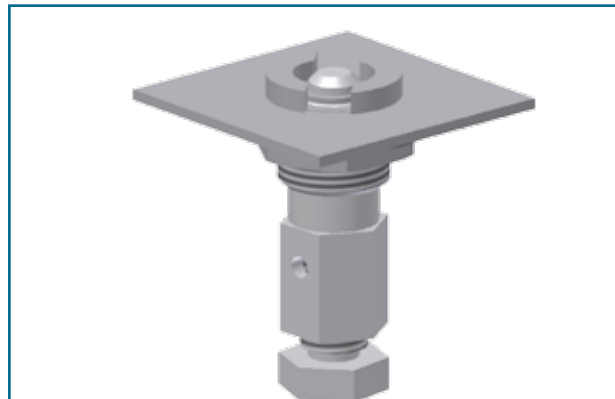
Function

The UV drain valves and breathers are normally installed on Ex d and Ex e enclosures. Both models UVB and UVD can be used as a combination drain and breather. The UVB model is equipped with internal o-ring to allow an IP66 protection to the enclosure when not in use.

Construction

The material used to manufacture drain valves and breathers UV series have been studied to allow the maximum protection against the highly corrosive agents present in these industries:

- bushing and shaft, as components directly involved into the explosion proof protection, are made of stainless steel AISI 316
- internal o-ring of silicone
- external gasket of silicone
- adaptor for thin wall enclosures (≤ 8 mm.) and locknut of stainless steel AISI 316



The UVB - UVD has a double marking Ex d and Ex e to be suitable for every kind of installation.

Since Ex e enclosures are normally build with thin walls, Supermec designed a special adaptor to allow the full discharging of water within a range of 0.8 to 8 mm. wall thickness. An external gasket allows an IP66 protection when the drain valve is not in use.

Protection

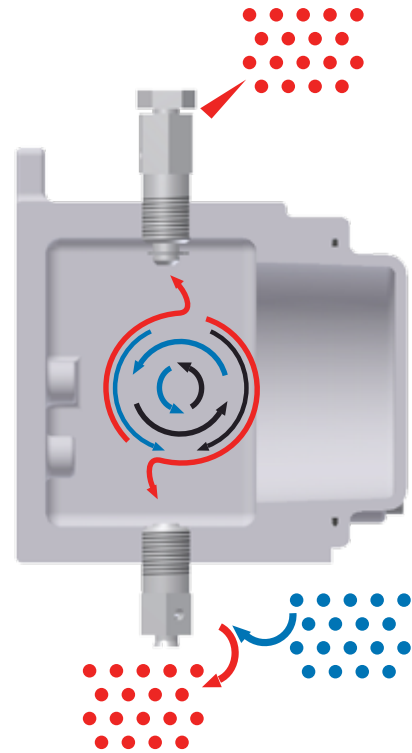
certificate number:	IMQ 11 ATEX 029 U	TC RU C-IT.AA87.B.00509		
marking:	II 2GD	Ex d IIC Gb	Ex e IIC Gb	Ex tb IIIC Db
ambient temperature:	-60°C +60°C			
degree of protection:	IP66 / IP6X			
conformity:	Directive ATEX 2014/34/EU		TP TC 012/2011	
standards:	IEC-EN60079-0	IEC-EN60079-1	IEC-EN60079-7	IEC-EN60079-31
	ГОСТ 31610.0	ГОСТ IEC 60079-1	ГОСТ P МЭК 60079-7	ГОСТ P МЭК 60079-31
category:	suitable for Zone 1 - 21 (gas) and Zone 2 - 22 (dust)			



Methods of installation

The installation of drain valve on bottom and breather on top side of enclosure is granting the most complete solution against water condensation since the continuous ventilation minimizes the phenomena.

The internal pressure is pushed outside through the breather (chimney effect) limiting the possible entry of rain from the top.



The sole installation of valve at the bottom with the combined function of drain and breather is giving, anyway, a good result and since the water penetration is practically impossible due to installation point, the IP66 protection is guaranteed also with the UVD model (always open).





UVB - UVBM

Lockable drain valve and breather unit with internal o-ring for IP66 protection when closed. Recommended use as breather on top side for outdoor installations.

Code	Colour	Ø
UVB	●	3/8" NPT
UVBM	●	M 16



UVD - UVDM

Drain valve and breather "always open" with IP65 protection when installed on the bottom side. Recommended use as breather on top side for indoor installations.

Code	Colour	Ø
UVD	●	3/8" NPT
UVDM	●	M 16



UVBME - UVDM E

Drain valve based on UVBM and UVDM models complete with adaptor kit to be installed on Ex e enclosures with wall thickness range from 0.8 to 8 mm. Provided with external gasket to maintain the IP rating of enclosure.

Code	Colour	Ø
UVBME	●	M 20
UVDM E	●	M 20



UVXE

Adaptor Kit for UV with metric thread to install on Ex e enclosures with wall thickness range from 0.8 to 8 mm.

Code	Colour	Ø
UVXE	●	M 20

