

# Electronic Superimposed Ignitors for HI Lamps up to 3500 W

Standard version

For metal halide lamps (HI)

Phasing of the ignition voltage:

60–90 °el and 240–270 °el

Max. permitted casing temperature: 105 °C

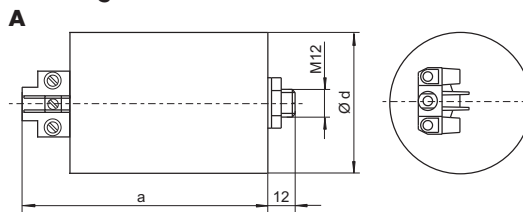
Screw terminals: 0.75–2.5 mm<sup>2</sup>

Fastening: male nipple with pre-assembled washer and nut

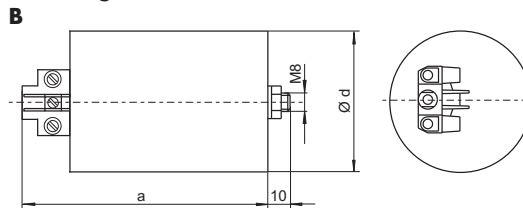
For luminaires of protection class I and II



Al casing



Al casing



Ignitor		Casing												
Type	Ref. No.	Voltage AC 50–60 Hz V	Max. lamp current A	Internal loss W	Inherent heating K	Ignition voltage kV	Load capacity pF	Switch-off time sec./Hz	Draw- ing	d Ø	a	b	c	Weight g
<b>Aluminium casing (Al)</b>														
Z 2000 S	<b>140432</b>	220–240	20	< 6	< 30	4–5	20–100	—	A	65	96	—	—	640
Z 2000 S/400 V	<b>140497</b>	380–415	12	< 5	< 32	4–5	20–2000	—	B	50	98	—	—	340
Z 3500 S/400 V	<b>140499</b>	380–415	20	< 7	< 35	4–5	20–100	—	B	65	96	—	—	650