





# BACKWOODS ADVENTURE MODS



## ABOUT US

The Backwoods Adventure Mods family is an American made overland accessory manufacturer based out of Springdale, Arkansas. We design and manufacture our own bumpers, rear swingouts, ladders, roof racks, storage boxes, and more for the van and midsize 4x4 market. At Backwoods, we use the industry's latest technology, robotics, tooling, and other equipment to ensure a consistent and efficient product every time.

We're different on purpose. Most manufacturers either use steel or aluminum only on their products. We recognize and see the value in offering a truly hybrid product. We use steel for strength in all the right places, but incorporate aluminum wherever possible in order to save weight and prevent rust. We know the offroad market demands both a strong and lightweight solution, and we're here to answer the call.



# MERCEDES SPRINTER FRONT BUMPERS



**MERCEDES SPRINTER  
WINCH READY**



**MERCEDES SPRINTER  
BULL BAR WITH WINCH**



## FEATURES

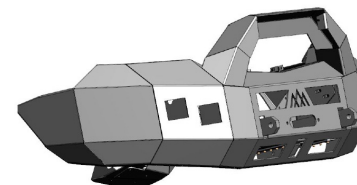
Exceeds Mercedes Airflow Requirements

Constructed of 1/4" and 3/16" 5052 Aluminum

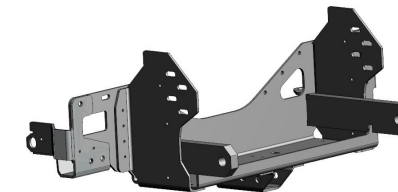
Integrated Steel Shackle Mounts, Winch Mount, and 2" Receiver

Equipped to Fit WARN 12,000 lb Winch and Pathfinder LED Lighting

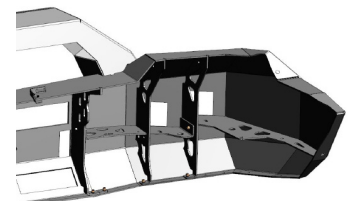
Black Textured Powder-Coat is Included



Optional DEF tank skid plate protects against rocks and trail debris.



Steel sub-structure creates the mounting interface along with frame strengthening brackets, winch mount, 1" thick shackle mounts, and a 2" receiver.



Integrated, interlocking gusset system adds strength while saving weight.

Nomad Series bumpers come winch ready, with or without LED bull bar for Mercedes Sprinter and Ford Transit Vans. Lights, winches and accessories sold separately.

*Results may vary when moving the ABA sensor from the OEM location. Drive with care until you have verified that the system functions correctly. Adjustments may be necessary. We cannot guarantee our product is compatible with this system unless properly calibrated by a Mercedes dealer.*



# MERCEDES SPRINTER REAR BUMPERS



## FEATURES - NON SWING OUT

- Constructed of 1/4" and 3/16" 5052 Aluminum
- Equipped to Fit RIGID D-Pro Flush Mount Pods
- Black Textured Powder-Coat is Included

*Note: The non swing out rear bumper works with all parking sensors and lane change assist. We cannot fully guarantee that all sensors will work unless they are properly recalibrated by Mercedes.*

## FEATURES - SWING OUT

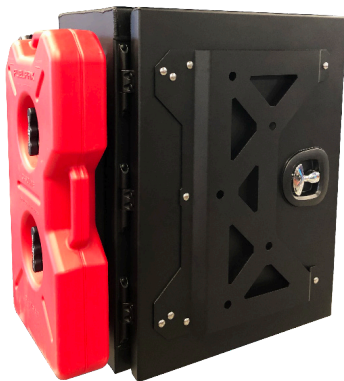
- Modular Bolting Allows You to Customize with Your Choice of Accessories: Cabinet Box, Set of Drop Down Toolboxes, Tire Carrier, and Upper Rack
- Base of Bumper Constructed of 7 Gauge Carbon Steel
- Swing Out Doors with Internal Ribbing Constructed of 1/4" 5052 Aluminum
- UHMW Wear Pad
- Equipped to fit Pathfinder LED Lighting
- Black Textured Powder-Coat is Included

*Note: The swing out rear bumper does not work with parking sensors, but you will retain lane change assist. We cannot fully guarantee that all sensors will work unless they are properly recalibrated by Mercedes.*





SWING OUT BUMPER - NO ACCESSORIES



**CABINET BOX**

The cabinet box is made from 1/8" aluminum and holds the EU 2000 series Honda generator with an adjustable interior shelf. The side plate is designed to mount your Rotopax.



**SET OF TOOLBOXES**

These stackable toolboxes are each 14" x 16" x 28" with drop down doors and made from 1/8" aluminum.

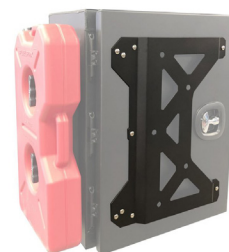


**TIRE CARRIER**

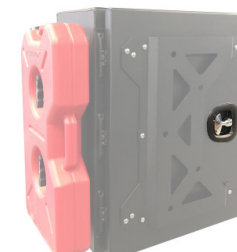
The tire carrier is made to carry up to a 35" tire and built from 3/16" aluminum.



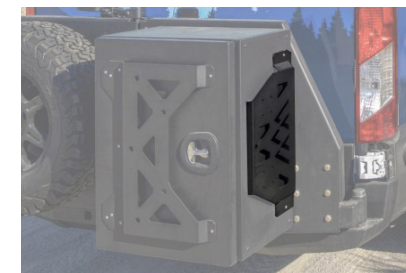
SWING OUT BUMPER - W/ ACCESSORIES



FRONT ACCESSORY PANEL



CABINET BOX LATCH



SIDE ACCESSORY PANEL

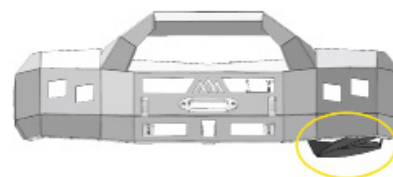


Complete your perfect rear setup with Rotopax fuel containers, available from Backwoods.

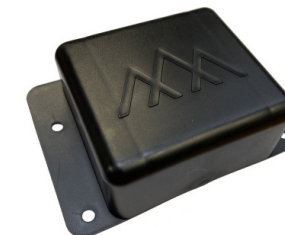


**UPPER RACK**

Upper rack is manufactured to hold not only your license plate, but it also accepts roof rack type accessories, such as bike and ski racks. It is made from 3/16" aluminum.



SPRINTER DEF SKID PLATE



SPRINTER ABA SENSOR HOUSING



CABINET BOX SHELF



# FORD TRANSIT FRONT BUMPERS



**FORD TRANSIT  
WINCH READY**



**FORD TRANSIT BULL  
BAR WITH WINCH**



## FEATURES

Bull bar and no bull bar options

Constructed of ¼" and ¾" 5052 Aluminum

Integrated Steel Shackle Mounts, Winch Mount, and 2" Receiver

Equipped to Fit WARN 12,000 lb Winch and Pathfinder LED Lighting

Black Textured Powder-Coat is Included



*Results may vary when moving the ACC sensor from the OEM location. Drive with care until you have verified that the system functions correctly. Adjustments may be necessary. We cannot guarantee our product is compatible with this system unless properly calibrated by a Ford dealer.*



# FORD TRANSIT REAR BUMPER



## REAR BUMPER FEATURES

- Constructed of ¼" and ⅜" 5052 aluminum
- Equipped to fit Pathfinder flush mount pods
- Allows full use of rear doors
- Compatible with parking sensors and blind spot monitors
- Compatible with OEM hitch
- Maintains ground clearance and departure angle
- Fits 2015-current Ford Transits
- Black textured powdercoat included

*Note: The non swing out bumper works with all parking sensors and lane change assist. We cannot fully guarantee that all sensors will work unless they are properly recalibrated by Ford.*



# MERCEDES SPRINTER ROOF RACK XL/SLIM - CUSTOM



## NOMAD ROOF RACK - SPRINTER

The toughest Mercedes Sprinter roof rack on the road is ready for adventure. Our rack provides vast space for storage, solar, and more. The Backwoods Sprinter roof rack has flexible configurations and mounts directly to the factory rails to provide a low-profile, more secure installation. With the sturdiest deck on the market and configurations to accommodate a 50" single-row light bar, two 50" light bars, or 5" x 7" quads, the Backwoods Roof Rack is the perfect addition to your Sprinter. Its three- or four-piece, modular design means it can be shipped to your door and installed without the need to lift into place.

## NOMAD LADDER - SPRINTER & REVEL

Our Sprinter ladders are compatible with 2014+ High Roof Sprinters in 144, 170, and 170 EXT configurations. We also have ladder options for Revel models, for our new DRIFTR series roof racks, and for vans without a roof rack.



# DRIFTR ROOF RACKS

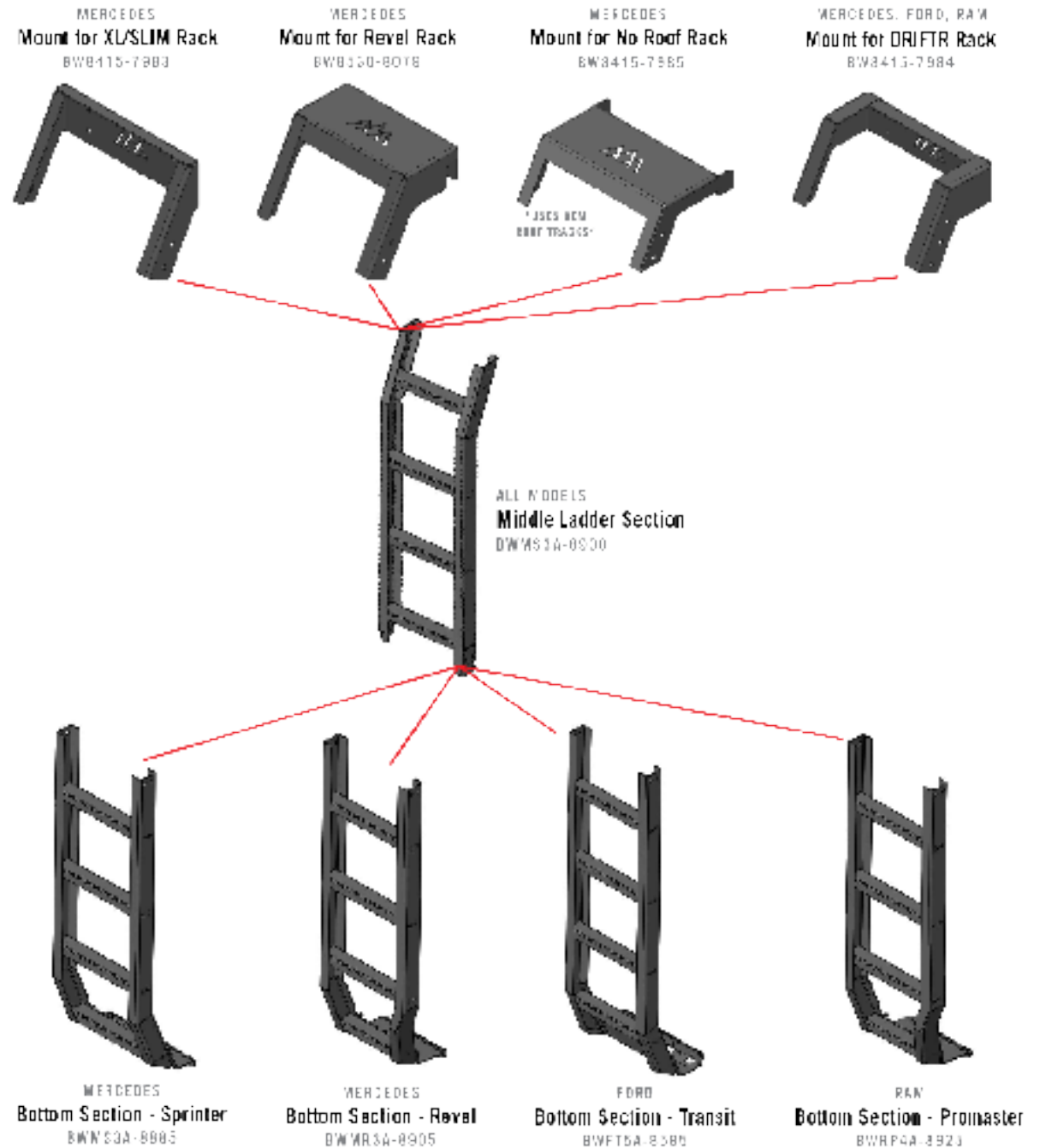


# ALL VAN LADDER CONFIGURATIONS



## DRIFTR SERIES OVERVIEW

Introducing our brand new product series we call “DRIFTR.” This is a new style roof rack specially made for Sprinters, Transits, Promasters, and 4Runners. In contrast to our more heavy duty style Nomad series roof racks, these are much more modular, light weight, and slim, making for super easy installation, customization, and shipping. If you’re wanting something heavy duty and strong enough to have multiple people stand on at once, then our Nomad Series HD or SLIM roof rack is for you.





# TACOMA FRONT BUMPERS & SKID PLATES

**H-LITE**  
SERIES MK



## FRONT BUMPERS

- 2 piece design - 26lb Aluminum outer shell + 54lb Steel winch cradle
- Full bumper weight - 80lbs (without bull bar) 85lbs (with bull bar)
- Large cutouts for winch access and winch spooling visibility
- 2 D-ring shackle mounts, & 2 square light cutouts to fit most aftermarket fog lights
- Flat top platform to add lightbars or other lighting options
- Extreme high clearance design for max approach angle & better fitment for larger tires
- Steel (optional) frame support brackets, durable powder coat finish included

## SKID PLATE SYSTEM

- Aluminum skid plate system (engine, transmission, transfer case, w/optional connector)
- Raw finish, with black powder coated steel crossmember



# TACOMA REAR BUMPERS - TACOMA

**Hi-LITE**  
SERIES MK



## HIGH CLEARANCE REAR BUMPER

- One piece steel bumper
- Increased departure angle
- Steel side wing bracing
- Recessed trailer plug
- 2" elevated receiver hitch
- Flush mounted light cutouts
- Tag lights included
- 3/4" steel recovery points
- Does not work with sensors
- Powder coat included
- 140lb total weight

## HIGH CLEARANCE SWING OUT

- One piece steel bumper
- Aluminum swing out doors
- Locking T-handle door stops
- Optional Tire carrier
- HD single locking latch
- Rear camera relocation bracket
- Increased departure angle
- Steel side wing bracing
- Recessed trailer plug
- 2" elevated receiver hitch
- Flush mounted light cutouts
- Tag lights included
- 3/4" steel recovery points
- Does not work with sensors
- Powder coat included
- 190lb total weight

## OVERLAND REAR BUMPER

- Simple bolt on installation
- Aluminum bumper
- Steel frame mounts
- Retains factory hitch
- Trailer plug harness cutout
- Tag lights included
- 6" single row light cutouts
- Does not work with sensors
- Powder coat included
- 30lb total weight





# 4RUNNER FRONT & REAR BUMPERS

**H-LITE**  
SERIES AX



## FRONT BUMPERS

- Available with/without bull bar
- Bull bar bumper 87lbs
- Non bull bar bumper 82lbs
- Very high clearance design
- Increased approach angle
- 2 piece hybrid design
- Aluminum outer shell (rust free)
- Steel inner for winch/recovery
- Large cutouts for winch access
- 2 recovery points
- 2 fog pod light pockets
- Flat top for accessory lights
- Easy, one man installation
- Includes powder coated finish

## REAR SWING OUT

- One piece steel bumper
- Aluminum swing out doors
- Locking T-handle door stops
- Optional tire carrier
- HD single locking latch
- Increased departure angle
- Recessed trailer plug
- 2" elevated receiver hitch
- Flush mounted light cutouts
- 3/4" steel recovery points
- Does not work with sensors
- Powder coat included
- 175lb total weight

## ACCESSORIES

- Washer tank reservoir guard
- Bumper frame support brackets
- Aluminum skid plate (coming soon)
- Mounts directly with our front bumper for a seamless flow
- DRIFTR roof rack (coming soon)







# TOYOTA PRODUCT GUIDE

## HI-LITE SERIES - BUMPERS & ACCESSORIES

SERIES	YEAR	MAKE	MODEL	DESCRIPTION	PART NUMBER
HI-LITE	16-21	TOYOTA	TACOMA	FRONT BUMPER	BWTY3T-103XXBBB
HI-LITE	16-21	TOYOTA	TACOMA	FRONT BUMPER - BULL BAR	BWTY3T-103FGBBB
HI-LITE	16-21	TOYOTA	TACOMA	FRONT BUMPER SUPPORT BRACKETS	BWTT3A-8725
HI-LITE	16-21	TOYOTA	TACOMA	OVERLAND REAR BUMPER	BWTY3T-203ZZAAB
HI-LITE	16-21	TOYOTA	TACOMA	HIGH CLEARANCE REAR	BWTY3T-209035B
HI-LITE	16-21	TOYOTA	TACOMA	HIGH CLEARANCE REAR - SWING OUT	BWTY3T-203ZZVVB
HI-LITE	16-21	TOYOTA	TACOMA	SWING OUT TIRE CARRIER	BW8255-7300
HI-LITE	16-21	TOYOTA	TACOMA	FULL SKID PLATE SYSTEM	BWTT3A-8710-NP
HI-LITE	16-21	TOYOTA	TACOMA	CONNECTOR SKID PLATE	BWTT3A-9130-NP

HI-LITE	14-21	TOYOTA	4RUNNER	FRONT BUMPER	BWT4R5-103XXBBB
HI-LITE	14-21	TOYOTA	4RUNNER	FRONT BUMPER - BULL BAR	BWT4R5-103FGBBB
HI-LITE	14-21	TOYOTA	4RUNNER	REAR BUMPER - SWING OUT	*COMING SOON*
HI-LITE	14-21	TOYOTA	4RUNNER	SWING OUT TIRE CARRIER	BW8255-7300
HI-LITE	14-21	TOYOTA	4RUNNER	FRAME SUPPORT BRACKETS	*COMING SOON*
HI-LITE	14-21	TOYOTA	4RUNNER	WASHER BOTTLE RESERVOIR COVER	*COMING SOON*
HI-LITE	14-21	TOYOTA	4RUNNER	ENGINE SKID PLATE	BWT4R5-8915

## DRIFTR SERIES - ROOF RACKS

SERIES	YEAR	MAKE	MODEL	DESCRIPTION	PART NUMBER
DRIFTR	14-21	TOYOTA	4RUNNER	ROOF RACK	BWT4R-8910-DRFT



# VAN PRODUCT GUIDE

## NOMAD SERIES - BUMPERS

SERIES	YEAR	MAKE	MODEL	DESCRIPTION	PART NUMBER
NOMAD	14-18	MERCEDES	SPRINTER	FRONT BUMPER - WINCH	BWMEMS-103XXFFB
NOMAD	14-18	MERCEDES	SPRINTER	FRONT BUMPER - BULL BAR - WINCH	BWMEMS-103XXIIB
NOMAD	2019+	MERCEDES	SPRINTER	FRONT BUMPER - WINCH	BWMS3S-103UUFFB
NOMAD	2019+	MERCEDES	SPRINTER	FRONT BUMPER - BULL BAR - WINCH	BWMS3S-103UUIIB
NOMAD	14-18	MERCEDES	SPRINTER	REAR BUMPER	BWMEMS-203ZZSSB
NOMAD	14-18	MERCEDES	SPRINTER	REAR BUMPER - SWING OUT	BWMEMS-203ZZVVB
NOMAD	2019+	MERCEDES	SPRINTER	REAR BUMPER	BWMS3S-203ZZSSB
NOMAD	2019+	MERCEDES	SPRINTER	REAR BUMPER - SWING OUT	BWMS3S-203ZZVVB

NOMAD	15-19	FORD	TRANSIT	FRONT BUMPER - WINCH	BWFDTR-103XXCCB
NOMAD	15-19	FORD	TRANSIT	FRONT BUMPER - BULL BAR - WINCH	BWFDTR-103XLLB
NOMAD	2020+	FORD	TRANSIT	FRONT BUMPER - WINCH	BWFT6F-103UUFFB
NOMAD	2020+	FORD	TRANSIT	FRONT BUMPER - BULL BAR - WINCH	BWFT6F-103XXIIB
NOMAD	15-19	FORD	TRANSIT	REAR BUMPER	BWFDTR-203ZZSSB
NOMAD	15-20	FORD	TRANSIT	REAR BUMPER - SWING OUT	BWFDTR-203ZZVVB

NOMAD	14+	RAM	PROMASTER	FRONT BUMPER - WINCH	BWRPRO-108UUDDB
-------	-----	-----	-----------	----------------------	-----------------

## LADDERS

PRODUCT	YEAR	MAKE	MODEL	DESCRIPTION	PART NUMBER
LADDER-TOP	2014+	MERCEDES	SPRINTER	XL/SLIM ROOF RACKS	BW8415-7983
LADDER-TOP	2014+	MERCEDES	REVEL	MOUNTS TO REVEL RACK	BW8530-8079
LADDER-TOP	2014+	MERCEDES	SPRINTER	OEM TRACKS/ NO RACK	BW8415-7985
LADDER-TOP	2014+	MER/FRD/RAM	SPT/TR/PM	MOUNTS TO DRIFTR RACK	BW8415-7984
LADDER-MIDDLE	2014+	MER/FRD/RAM	SPT/TR/PM	MIDDLE - ALL MODELS	BWMS3A-8900
LADDER-BOTTOM	2014+	MERCEDES	SPRINTER	BOTTOM MOUNT - SPRINTER	BWMS3A-8885
LADDER-BOTTOM	2014+	MERCEDES	REVEL	BOTTOM MOUNT - REVEL	BWMR3A-8905
LADDER-BOTTOM	2014+	FORD	TRANSIT	BOTTOM MOUNT - TRANSIT	BWFT5A-8585
LADDER-BOTTOM	2014+	RAM	PROMASTER	BOTTOM MOUNT - PROMASTER	BWRP4A-8925
FULL LADDER	2014+	MER/FRD/RAM	SPT/TR/PM	ALL DRIFTR/SLIM/XL LADDERS	-
FULL LADDER	2014+	MERCEDES	REVEL	LADDER	-
FULL LADDER	2014+	MERCEDES	SPRINTER	NO ROOF RACK LADDER	-

## NOMAD SERIES - ROOF RACKS

PRODUCT	YEAR	MAKE	MODEL	DESCRIPTION	PART NUMBER
ROOF RACK - XL	2014+	MERCEDES	SPRINTER	XL - 144	BWS-0144-XL
ROOF RACK - XL	2014+	MERCEDES	SPRINTER	XL - 170	BWS-0170-XL
ROOF RACK - XL	2014+	MERCEDES	SPRINTER	XL - 170 EXT	BWS-E170-XL
ROOF RACK - SLIM	2014+	MERCEDES	SPRINTER	SLIM - 144	BWS-0144-SLIM
ROOF RACK - SLIM	2014+	MERCEDES	SPRINTER	SLIM - 170	BWS-0170-SLIM
ROOF RACK - SLIM	2014+	MERCEDES	SPRINTER	SLIM - 170 EXT	BWS-E170-SLIM

## DRIFTR SERIES - ROOF RACKS

PRODUCT	YEAR	MAKE	MODEL	DESCRIPTION	PART NUMBER
ROOF RACK	2014+	MERCEDES	SPRINTER	XL - 144	BWS-0144-DRFT
ROOF RACK	2014+	MERCEDES	SPRINTER	XL - 170	BWS-0170-DRFT
ROOF RACK	2014+	MERCEDES	SPRINTER	XL - 170 EXT	BWS-E170-DRFT
ROOF RACK	2015+	FORD	TRANSIT	148	BWT-0148-DRFT
ROOF RACK	2015+	FORD	TRANSIT	148 EXT	BWT-E148-DRFT
ROOF RACK	2013+	RAM	PROMASTER	159 LENGTH	BWP-0159-DRFT
ROOF RACK	2013+	RAM	PROMASTER	159 EXT	BWP-E159-DRFT

## SWING OUT & MISC. ACCESSORIES

YEAR	MAKE	MODEL	DESCRIPTION	PART NUMBER
-	-	-	30x15x24 ALUMINUM CABINET BOX	5000-3010
-	-	-	16x14x28 ALUM. DROP DOWN TOOLBOX	5000-3000
-	-	-	TIRE CARRIER (SPRINTERS & 2WD TRANSITS)	BW8255-7000
-	-	-	TIRE CARRIER (AWD TRANSITS & 350 DUALY)	BW8255-7010
-	-	-	TIRE CARRIER (SPRINTER DUALY)	BW8255-7020
-	-	-	CABINET UPPER RACK	BW8190-7300
-	-	-	TOOLBOX UPPER RACK	BW8190-7310
14-18	MERCEDES	SPRINTER	DEF SKID PLATE	BWMEMS-103SKID
2019+	MERCEDES	SPRINTER	ABA BRACKET	BW8075-0000
-	-	-	CABINET BOX ACCESSORY PANEL - FRONT	5000-3010-DRPNL
-	-	-	CABINET BOX ACCESSORY PANEL - SIDE	5000-3010-SDPNL
-	-	-	CABINET BOX - SHELF	5000-3010-SHELF
-	-	-	CABINET BOX - LATCH	5500-0000





4180 W. Sunset Ave. Springdale, AR 72762  
backwoodsadventuremods.com

  
**BACKWOODS**  
ADVENTURE MODS

@backwoodsadventuremods (479) 365-6700  
info@backwoodsadventuremods.com

