

Roof Rack Installation Instructions

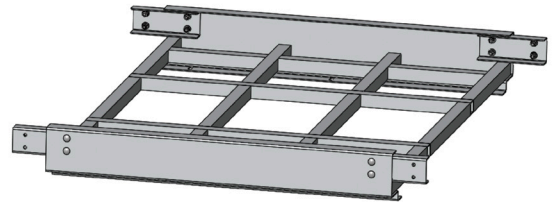
Note: Van must be upfitted with roof rails

Hardware included:

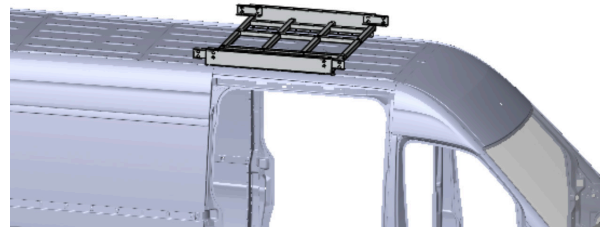
Tools needed:

Note: If you have access to an overhead hoist or crane, you can fully assemble the rack on the ground and raise to the roof as a complete unit. However, the instructions below are written so that a DIY team can perform the installation without a hoist.

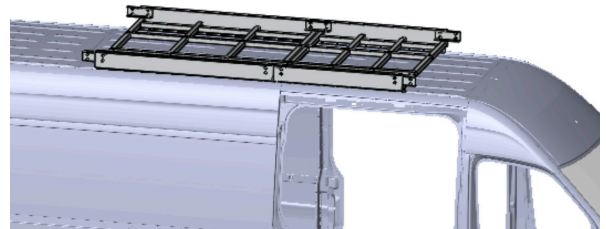
1) Install the roof rack one section at a time, beginning with the center section (for a 170" wheelbase van, this will be the 2nd section, or the one that attaches to the back of the front section). Attach the connector brackets as pictured to the front and back of the rack section using the 3/8" carriage bolts.



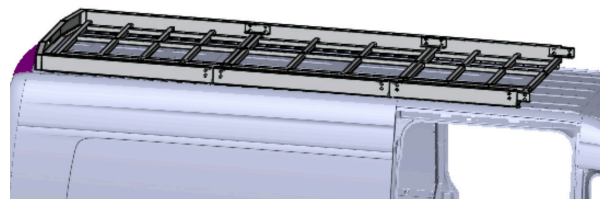
2) Raise the center section (first section behind the front section) up on to the roof. Take care not to scratch your van! The rack is designed to sit directly on to the roof rails. Slide the track bolts into the rail and place them under the mounting holes of the roof rack. Adjust the position of this section so that the front of the section is roughly 20" behind the forward roof seam. Install the flat washers, lock washers, and nuts on the track bolts but do not tighten yet.



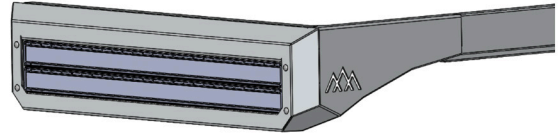
3) ***170" wheelbase only*** Install the 3rd section: While still on the ground, install the rear connector brackets using more of the 3/8" hardware. Raise this section onto the roof. Install the track bolts, then connect this section to the section from step 2.



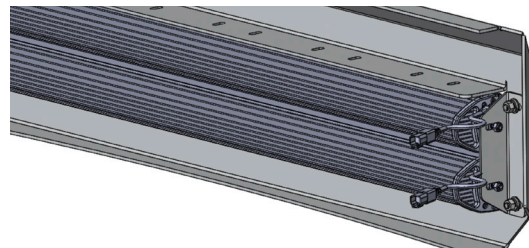
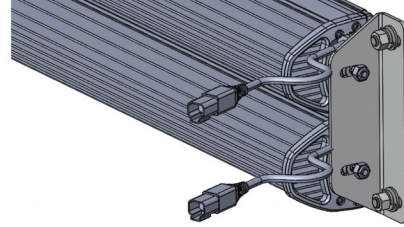
4) Raise the rear section onto the roof and similarly install the track bolts and connector bolts.



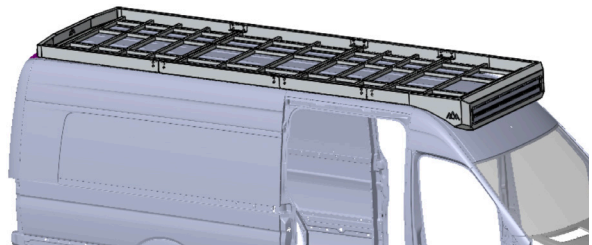
5) The front section will require the most care, since it's not fully supported from underneath. Several helpers are recommended to keep from accidentally scratching the van with the front section during installation. It may help to lay a blanket on the forward section of the roof, or the "forehead" of the van.



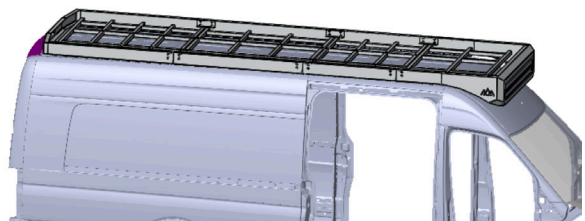
If your front section has the LED light option, it's easier to install the lights on the ground. Install the lights with the supplied brackets and hardware.



As with the other sections of the rack, raise the front section to the roof and secure it to the rails with the track bolts, and attach it to the center section with the 3/8" hardware.



6) At this point, you may need to shift the entire rack forward or rearward for optimal fitment against the roof and around any vent fans. Once in the desired location, tighten the connector hardware, and finally, the rail/track hardware.



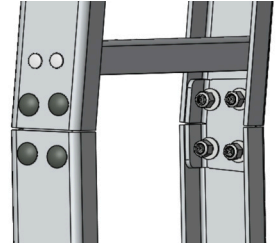
Ladder Installation Instructions

Hardware included:

Tools needed: 9/16" socket wrench, 7/16" socket wrench, 7/16" wrench, marker or paint pen, 1/4" drill bit, 3/8" drill bit

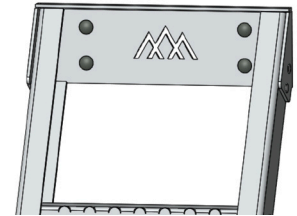
1) Choose the location for the ladder. Typically just in front of the rear tire on the driver's side.

2) Using (8) of the 3/8" carriage bolts with flat washers, lock washers, and nuts, attach the upper half of the ladder to the lower half with the small connector brackets. No need to fully tighten the hardware at this point. You may need to make some adjustments during the installation.



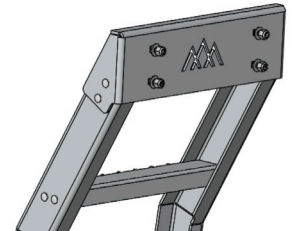
3) Loosely install the lower bracket to the lower half of the ladder using the (4) 1/4" hex bolts with flat washers, lock washers, and nuts.

4) With a helper, hold the ladder against the side of the van to mark the location of the holes. Align the upper bracket with the roof rack and make sure that the holes won't have any obstruction within the side of the roof rack once drilled. Align the lower holes in the lower bracket with the pinch weld. Make sure that the ladder is straight and is in a location that looks good on your van. Once you have the ladder where you want it, mark the location of the holes to drill with a marker or paint pen.



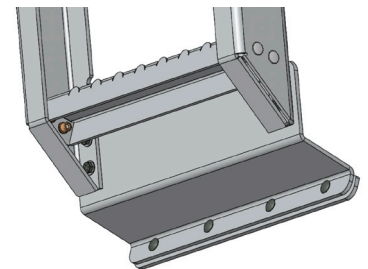
5) Use a 3/8" drill bit and drill the 4 holes in the roof rack for the upper bracket.

6) Use a 1/4" drill bit and drill the 4 holes in the pinch weld for the lower bracket.



7) Using (4) of the same 3/8" hardware sets, loosely install the ladder at the top to the roof rack.

8) Using the (4) 1/4" carriage bolts, install the ladder at the bottom to the pinch weld. On the back side of the pinch weld, install the backing plate over the carriage bolts, then install the flat washers, lock washers, and nuts.



9) At this point, tighten the hardware from step 2.

10) Tighten the upper hardware at the roof rack from step 7.

11) Tighten the hardware from step 3 to secure the ladder to the lower bracket.

12) Tighten the hardware from step 8 to secure the ladder to the pinch weld.

