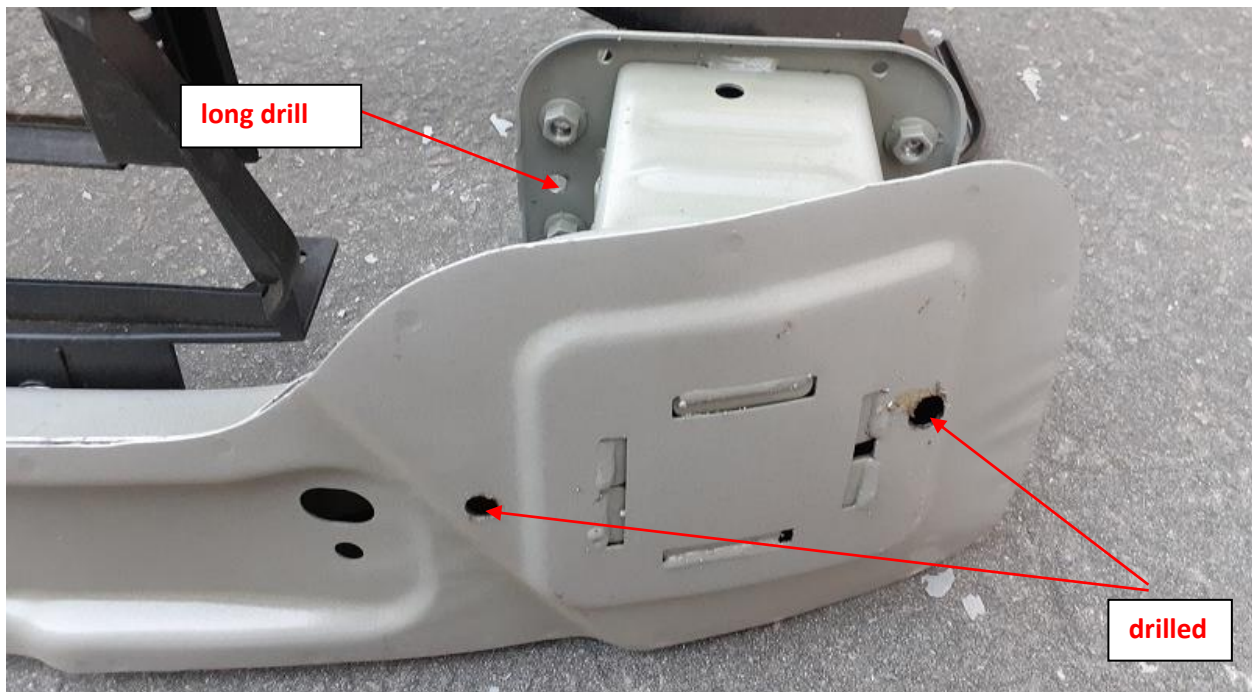


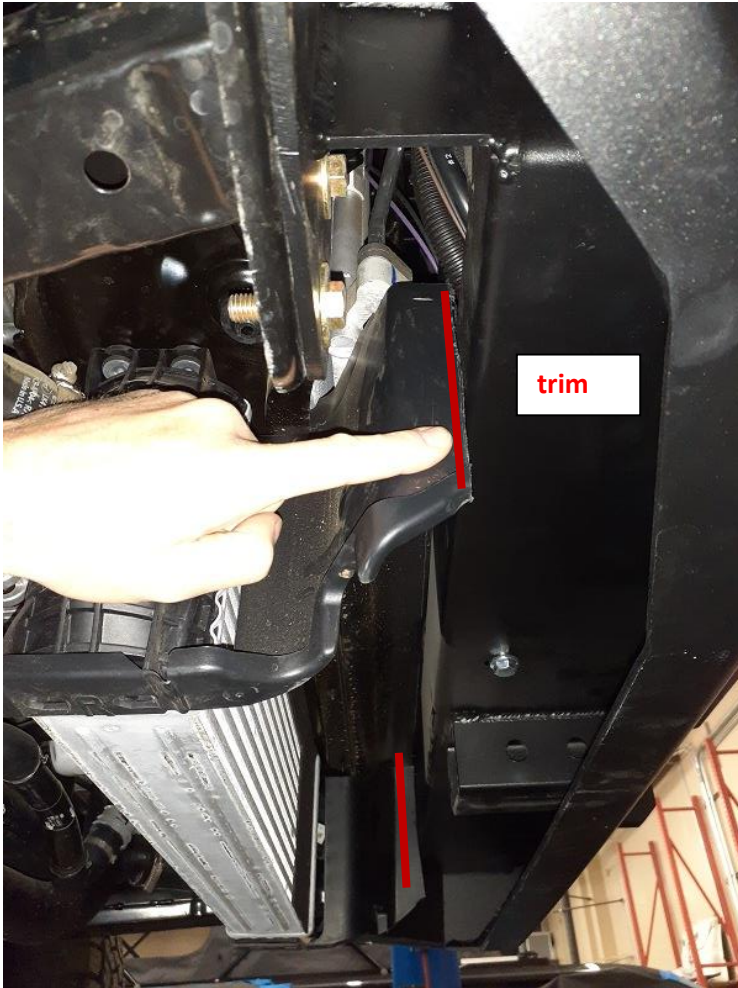
2020 Ford Transit Backwoods Bumpers ModVans Install - Update I

1 – Front Bumper

Overall the install was fairly easy and straight forward. I had experience with one Aluminess bumper in the past, so I was familiar with removing the OEM front crash bar. I drilled through the crash bar to drill the spot weld instead of hammering a chisel to break apart the spot welds. A little bit too brutal for my taste...



I had to trim the radiator plastic shroud about ½" so the winch carrier would sit without interference.



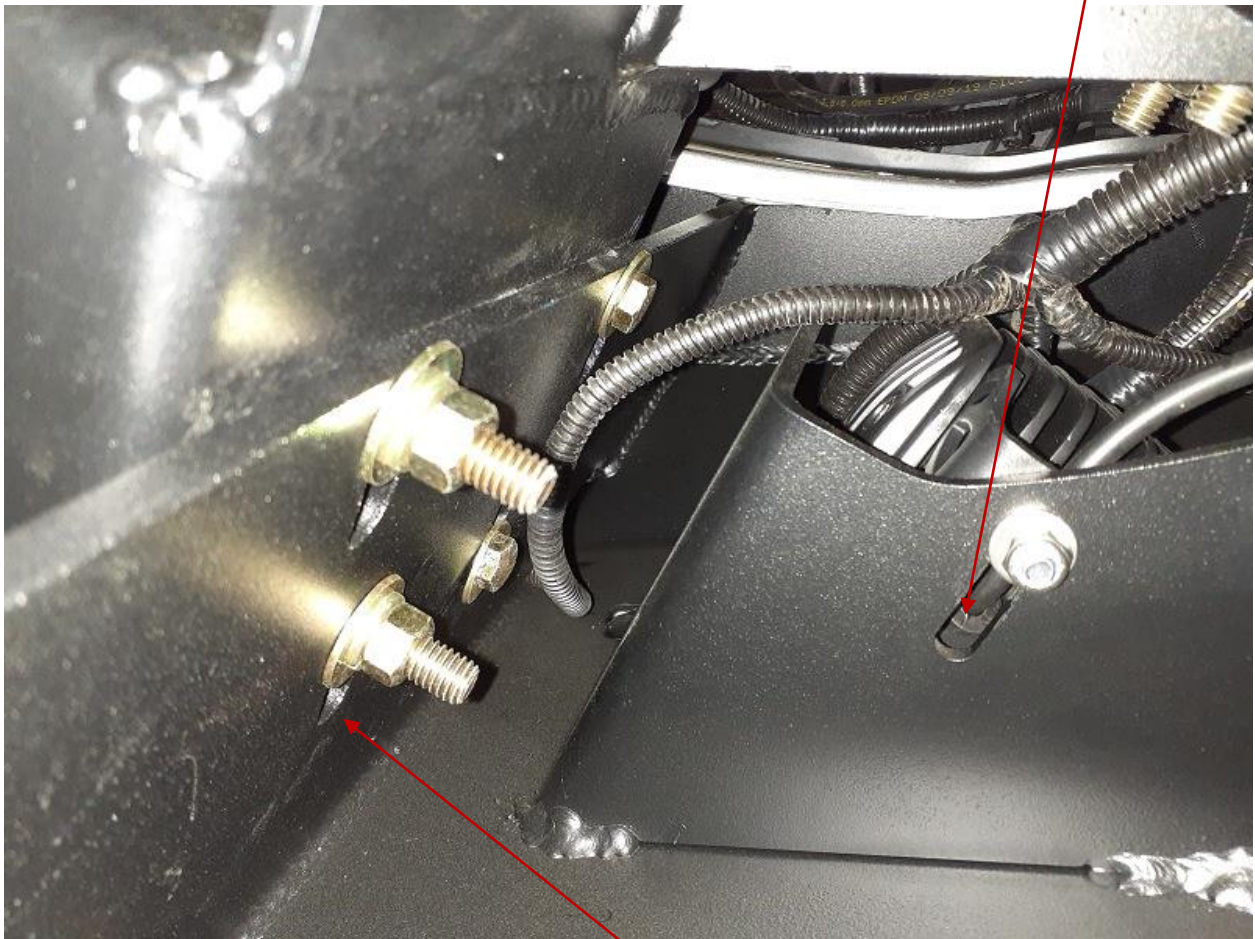
I first installed the winch carrier without the shims behind and noticed that everything would need to move further forward to fit the body lines better. I found the shims in the box, removed the winch carrier and reinstalled everything with shims. I traced a centerline on the mounting plates and lined it up with a OEM notch. I used a level to mount the winch carrier level and as centered as possible on the van. Mounting it level turned out to not be exactly symmetrical on the front frame (maybe slight tolerances errors from Ford...?). Next I installed the winch but did not torque it down yet. I ran the power cables around the radiator on passenger side. The positive cable was just long enough to reach a power stud on the auxiliary relay box. I shortened the ground cable to be bolted directly to the chassis under the passenger headlight.

Next, I presented the bumper face. It had to be brought all the way up, maxing out the slots adjustments but it fit well with the body lines. All hardware was reasonably accessible. I torqued to about 100ft-lbs (no specifications??)



Easy to reach

Fog light slot maxed out



Slots maxed out forward. Looking at passenger side winch carrier to bumper face mounting



Slots maxed out upward. Looking inside the winch tray at driver side winch carrier to bumper face mounting. (light bar wiring plug)

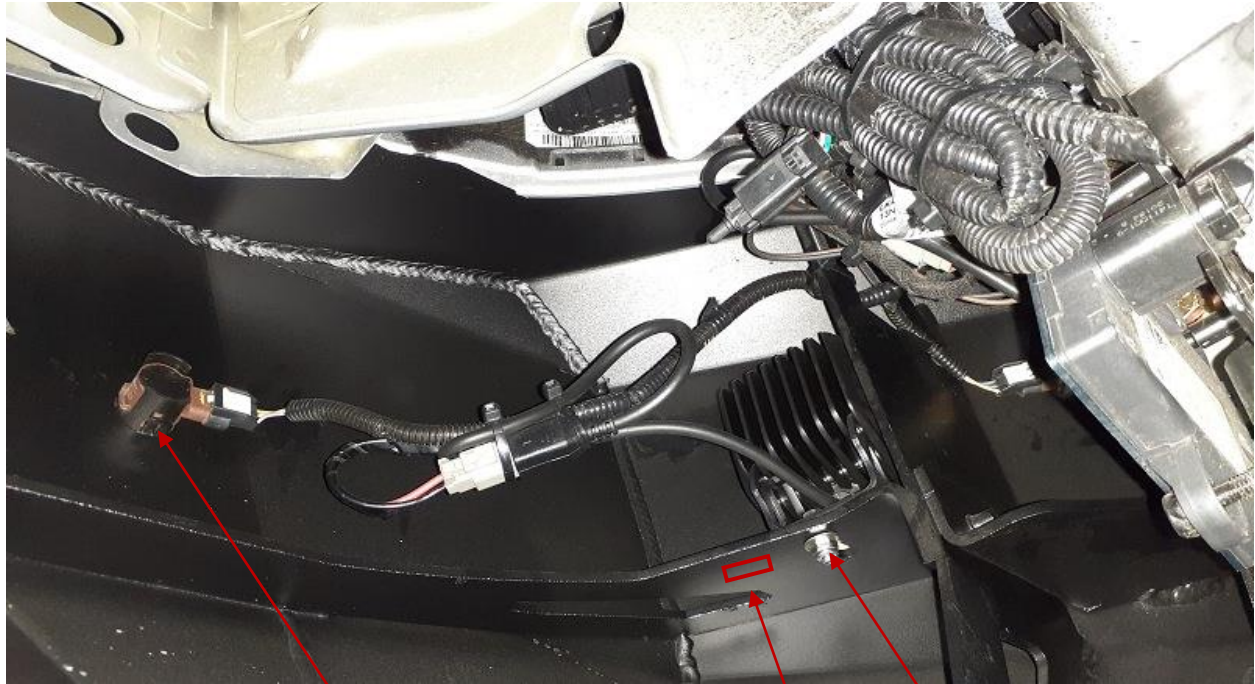
I installed the LED light bar with its own brackets and it was a total nightmare, didn't fit, scratched the bumper.... Ugh... grinding, prying, More Ugh... After talking to Evan on the phone, I will remount it with the provided brackets.

The sensor brackets popped right in, nice job with laser cutting. The bumper needs a skid plate for the windshield washer fluid reservoir, it hangs out too low under the bumper. We are working on it but I don't want the skid plate to be attached to both the bumper and the frame in case it doesn't flex the same. And I don't want the skid plate to block the install of the front lower bolts... TBD



Reservoir hangs low

The cube lights fit but the slots are maxed out. It'd be nice to add a few zip tie slots here and there to tidy up the wiring.



Nice fit on sensor brackets !

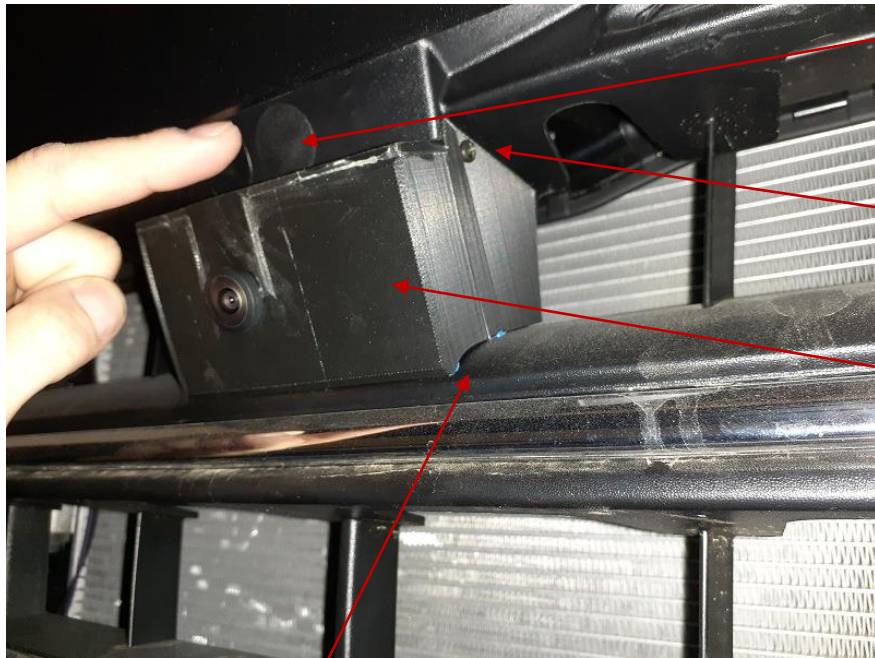
Small slot holes for zip ties ?

Slots maxed out rearward. Looking at driver side fog light

The front camera had to be relocated. It is tricky to remove it from its OEM housing and requires removing one bracket with 2 Torx screws. The screws are very hard to reach and the whole operation is blind. That step needs to be done while the front end is apart and before installing bumper components. There is actually a fair amount of space between the radiator and the grille for your whole forearm, but you need a very small stubby ratchet. The new 3D printed housing mounts under the grille logo with 2 screws from underneath and 2 screws on the side. The housing is 2 parts and glued together (without glue on the camera itself). It is our first prototype design. It seemed to work, and we get a clear picture of the front of the van. It could definitely be refined/modified...



Front camera bracket – 2 torx. Good luck!!



OEM camera location

2 screws on the side

3D printed front camera housing

2 screws from underneath, inside



Overall we removed 3 OEM parts in the front that I call “the crash bar”, “the lower crash bar” and the “lower plastic skid plate (full width of van)”. The particular van that we used for this install is not equipped with the variable louvers in the front. You can see the mounts in the pictures but not the louvers themselves. If the louvers are present, there is a module to control them that would need a relocation bracket.



The 3 OEM parts



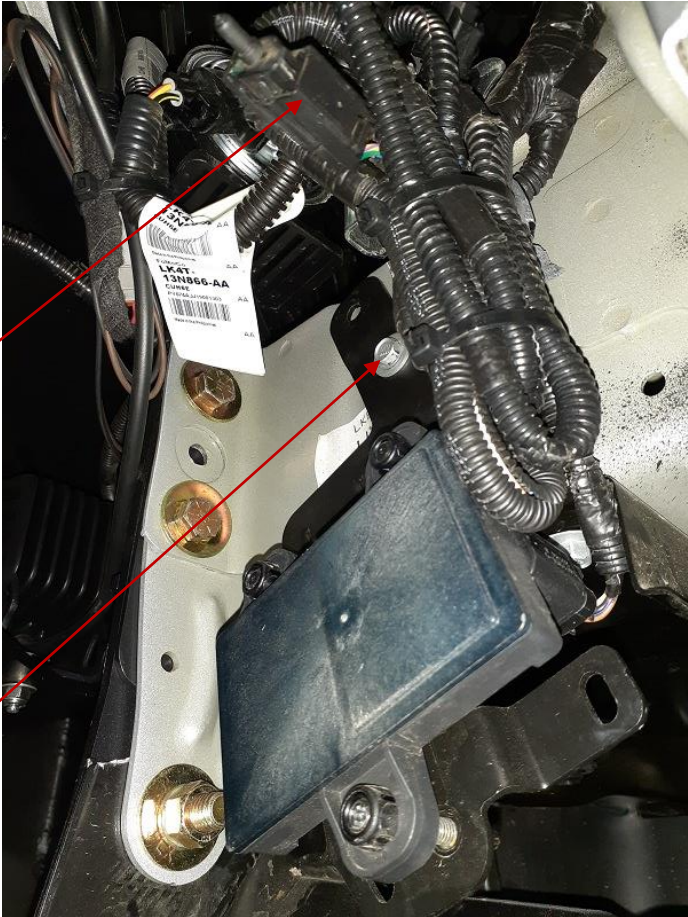
Louvers mounts but not installed on this van

Louver module would be here I think

Our van is equipped with another module that needed relocation. I installed it forward of the driver wheel well in an OEM tapped hole. The outside temperature sensor is also part of that wiring harness. As of now it is all zip tied together in that general location.

Temperature sensor is part of the wiring harness and all bundled up zip tied here.

Relocated the front module on that OEM tapped hole. Not a great option to be honest. I trimmed the brackets to fit in that area.





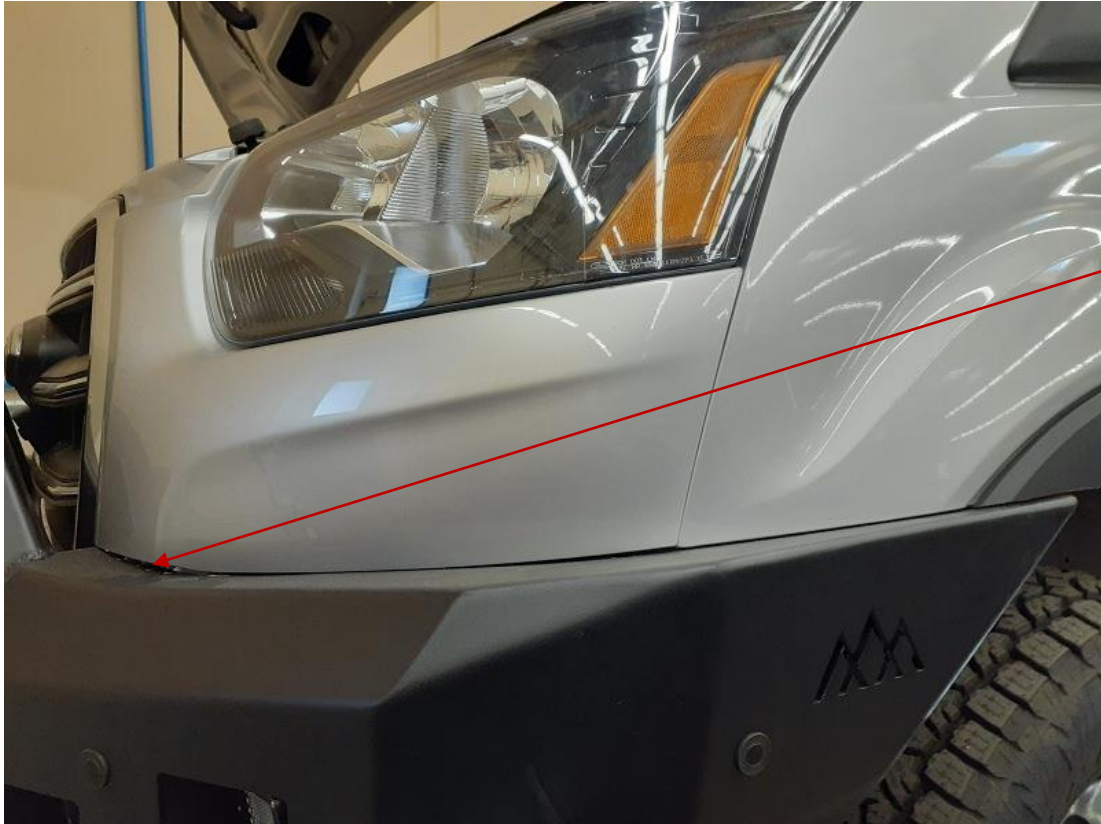
General area for front module, forward of driver wheel well

We are very pleased with the overall fit of the front bumper.



Nice fit!





Here is the only "larger" gap between bumper and body, on both driver and passenger side. The body line might not be a simple straight curve...



Nice fit around the grille area

Ugh...!!!