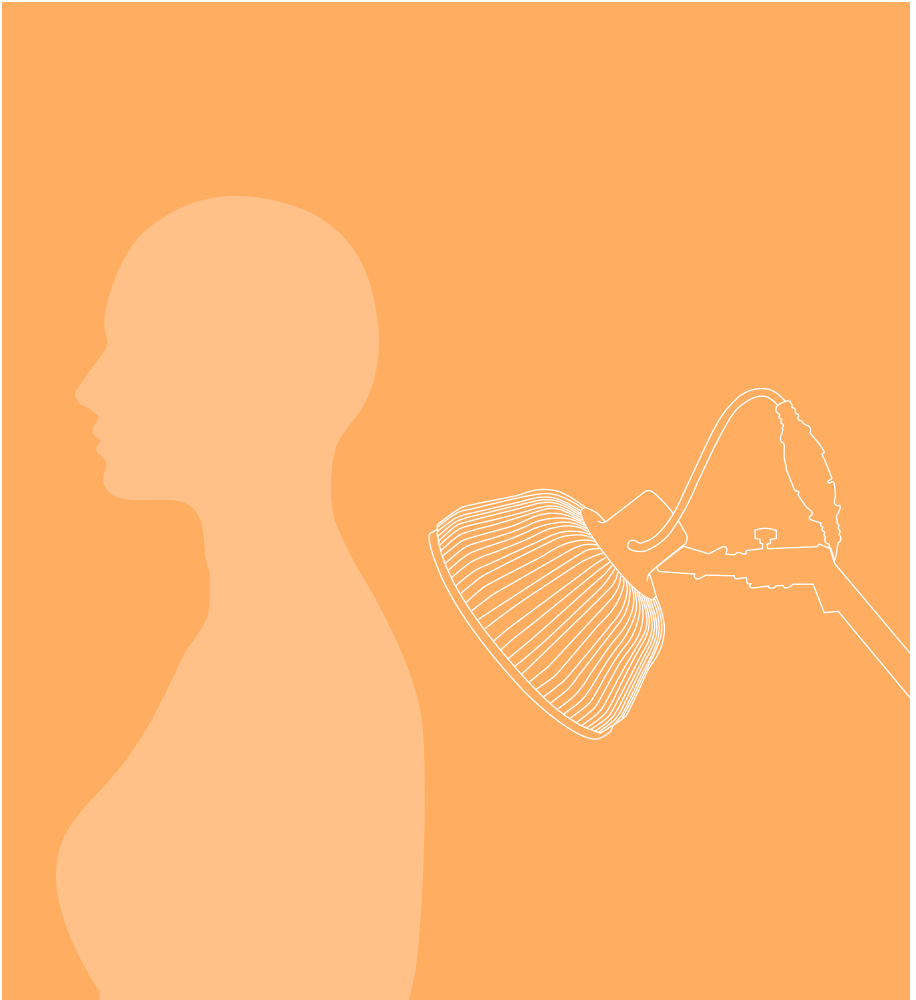


BASHAN



TDP Far Infrared Mineral Lamp User Manual

Model: TDP-I66F

INTRODUCTION

The TDP (Teding Diancibo Pu) Mineral Lamp is a relatively new therapeutic device that treats ailments by emitting far infrared light. This method is being increasingly used by physical therapists, chiropractors, acupuncturist, and other healthcare professionals to help their patients with chronic illness.

It is non-invasive, safe and easy to use. The far infrared light or mid-IR wavelengths it emits can loosen the fibrous tissues connecting the muscles and organs. Blood can thus circulate more freely in the smallest of vessels in the body by way of microcirculation and promote healing.

Not only blood delivers fresh oxygen, nutrients, and healing enzymes into the body cells, it also works to carry away toxins, dead cells, debris, and other waste. In this way, the device stimulates the body to heal itself in a process similar to the healing energy that radiates from the hands of a massage therapist.



HOW THE TDP LAMP WORKS

The mineral plate in the lamp head comprises an iron plate that is about 1 millimeter in thickness. It contains 33 trace elements in unique mineral forms. The iron content of the plate helps the heat spread uniformly across the panel.

The key component of the TDP Lamp is the mineral plate that is heated to 870 °F or 466 °C. This device can emit far infrared radiation that ranges from 2 to 25 micrometers. The minerals in the mineral plate are ionized. The heat, radiation, and electromagnetic waves of the lamp carry these ions into the human body. Each time you suffer stress, anxiety, illnesses, injuries, or fatigue, your body needs minerals to rebuild and rejuvenate itself. By using the channel of heat waves that are similar to the natural energy of your body, the TDP lamp also called a Miracle Lamp can deliver the essential minerals that your body needs for health, healing, and wellness.



WHAT YOU CAN GET FROM THE TDP LAMP

- Temporarily increase local blood circulation
- Temporarily relieve pain and stiffness associated with minor muscle and joint

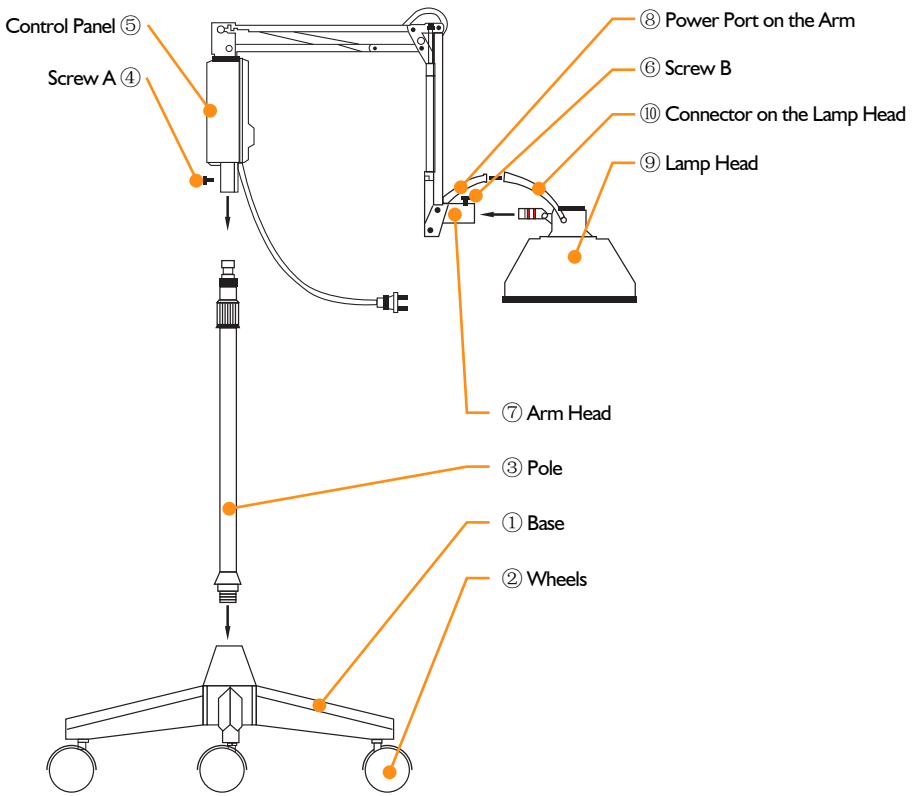
SPECIFICATION

Model:	TDP-166F
Dimension:	565*387*255 mm / 22.2*15.2*10 inch
Weight:	9.5 kg / 20.9 lb
Radiant Plate Diameter:	16.6 cm / 6.5 inch
Power Input Rating	110V, 60Hz, 250W
Electric Shock Protection Classification	Class II
Water Proof Class	IP22
Spectrum Range	5 - 25 microns
Temperature Range of Skin Surface Applied	40°C - 45°C / 104°F - 113°F
Warming Up Time	15 - 20 minutes
Operating Time	Maximum 60 minutes
Total Working Hours for Heating Lamp	1000 hours

TDP LAMP COMPONENTS



ASSEMBLY INSTRUCTIONS



Step 1: Place the base① on the floor, screw the wheels② into the base①.

Step 2: Insert the pole③ into the base①.

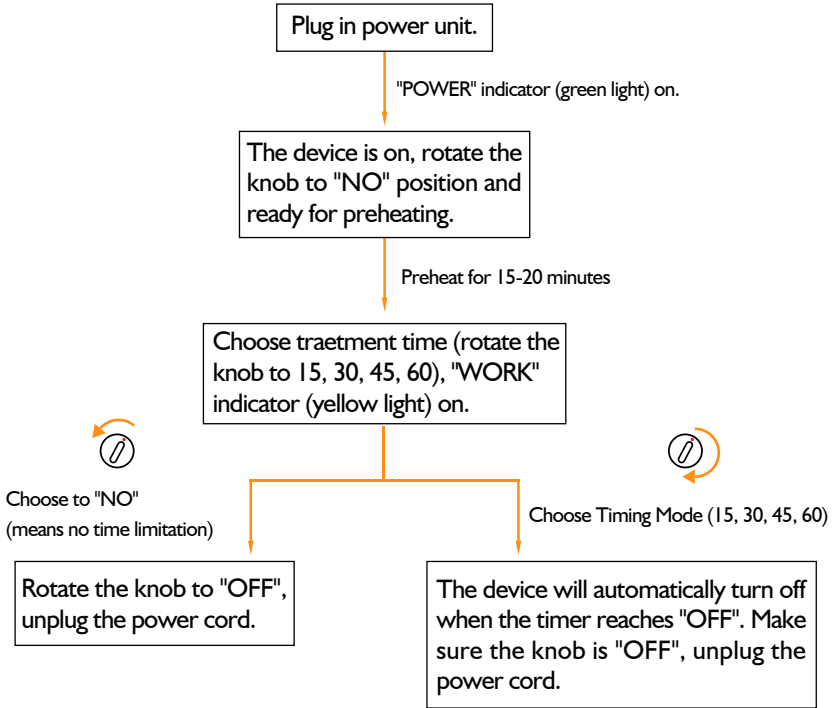
Step 3: Loosen the screw A④ under the control panel⑤, insert the control panel⑤ into the pole, tighten the screw A④.

Step 4: Loosen the screw B⑥ on the spring arm, insert the lamp head⑨ into the arm head⑦, tighten the screw B⑥.

Step 5: Connect the connector on the lamp head⑩ to the power port⑧ on the arm.

NOTE: The lamp CANNOT operate if it is not correctly installed. It will automatically turn off if it is tilted. Reinstall the lamp and make sure that the lamp is perpendicular to the ground before turning it on again.

OPERATION PROCEDURE



OPERATION ENVIRONMENT REQUIREMENTS

OPERATION ENVIRONMENT REQUIREMENTS	
Temperature	5°C - 40°C / 41°F - 104°F
Relative Humidity	≤80% RH
Barometric Pressure	70kPa - 106kPa

TRANSPORTATION AND STORAGE ENVIRONMENT REQUIREMENTS	
Temperature	-20°C - 50°C / -4°F - 122°F
Relative Humidity	≤95% RH
Barometric Pressure	70kPa - 106kPa

CAUTIONS

- Infants, children or adults who have difficulties express cannot be given this treatment.
- This device must not be used on patients with acute illness, open wound, fever, cardiovascular disease, varicose veins, skin abnormalities, or tendency to bleed.
- This device should never be used on the head for patients who have hypertension.
- This device should never be used directly to eyes.
- People who cannot sense temperature sensitively are not encouraged to use this device.
- People who have implants like pacemaker, silicone or metal cannot take this treatment. It could cause internal burns.
- Pregnant people cannot use this device.

FAQ

How long is a proper treatment time?

It is recommended for a minimum of 40 minutes per treatment session on the targeted area. The treatment time for a given session may vary depending on the condition being treated. The maximum treatment time for one session is suggested to be **NO MORE THAN** one hour, **NO MORE THAN** two sessions one day. Contact us or your physician for advice before use.

How far is a proper distance between the skin and lamp head?

The surface of human skin should remain around 40°C or 104°F. The distance between the treated surface and heating head is suggested to be 8 - 12 inches to prevent possible burns. The distance can be adjusted when you feel too hot or not warm enough.

The device doesn't work after installation.

The lamp **CANNOT** operate if it is not correctly installed. It automatically turns off when it is titled. Reinstall the lamp and make sure that the lamp is perpendicular to the ground before turning it on.

The lamp head doesn't turn red when it's on, is it broken?

This product is designed to protect your eyes from lights, it won't illuminate when is on. You can tell from the lights on the control panel if the lamp works. The green light indicates that the lamp is power on, and the yellow light indicates the lamp is working.

Can I use this lamp on the face?

This device can be used on the face but make sure wear an eye mask or keep your eyes close during treatment. Keep the lamp not too close to prevent possible burns. It is suggested to use it on face **NO MORE THAN 30 minutes**.

Why does the lamp take so long to heat up?

The component of connecting the heating plate in the lamp head is nickel-chromium wire. It determines the heating time of the lamp and needs 15 to 20 minutes to heat up. The mineral plate inside the lamp head can emit far infrared radiation when it is heated to 870°F or 466°C. It makes the device work better.

I don't like the sound of ticking clock when I choose timing mode.

This device has a "NO" mode (means no time limitation) and a timing mode. You could choose "NO" mode if you don't like the sound of a ticking clock. Make sure rotate the knob to "OFF" and unplug the power cord after use.

Is there a lifetime for the lamp or the mineral plate?

This product can operate over an extended period of time. And the mineral plate needs to be replaced after 1,000 hours of use.

Where can we get replacement for mineral plate when 1,000 hours are up?

It is suggested to replace the lamp head directly after 1,000 hours of use. Go to link <https://www.amazon.com/dp/B07SGBZQHY> for TDP lamp head for TDP-166F or contact us at support@fricare.com to get support.

WARRANTY

We stand by the quality of our choice for TDP Lamp from BASHAN by offering a twelve-month warranty.

A special treat awaits those who share their honest experience with us.

To help us do better, follow the steps below:

1. Scan the QR code or go to the link:

<https://www.amazon.com/review/create-review/?asin=B07D73M7YZ&>



2. Share and rate your experience with TDP Mineral Lamp

3. Email us at support@fricare.com with your sharing and order number

The top 10 sharing can get a replacement for TDP lamp head while supplies last.

