

A blue line-art icon of a stethoscope, showing the earpieces at the top, the chest piece on the right, and the tubing connecting them.

BEST
STETH  **SCOPE**
GUIDE

FriCARE Dual Head Stethoscope
Instructions & Lifetime Warranty

Why I Can't Hear Sound?

Did you check the opening indicator dot on the stem of the chestpiece?

Is the stethoscope put in your ears correctly?

Did you locate the correct heart's position?

Check the Dual Head Chestpiece

FriCARE dual head chestpiece enables you to switch the active sound channel from the diaphragm side to the bell side or vice versa, which is flexible to listen to high and low frequency sound for auscultating adult patients.

The BLACK indicator dot (Fig.1) has been placed on the stem to facilitate the identification of the active sound channel. If the diaphragm is open, the bell will be closed, preventing sound from coming in through the bell, and vice versa.

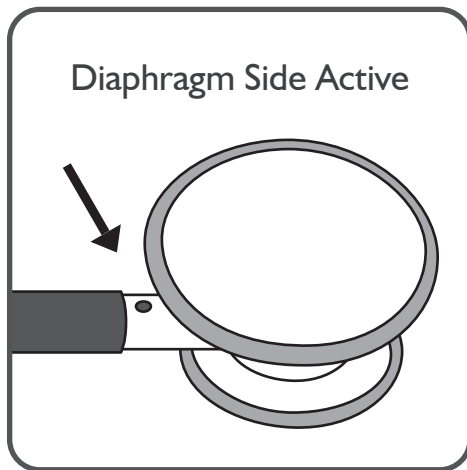


Fig.1

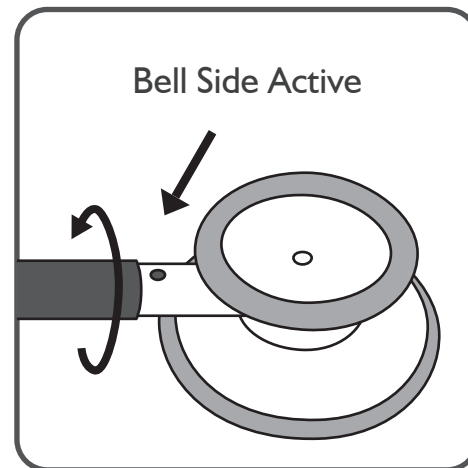


Fig.2

The stem can be rotated in either clockwise or counterclockwise directions. Rotate the stem can achieve the change of diaphragm and bell easily.

If the Indicator dot is oriented on the same side as the diaphragm, the diaphragm is active for auscultation. To switch to the bell side of the chestpiece, Index (rotate) the chestpiece 180° as shown in Fig.2 until the chestpiece “clicks” into place and the indicator dot is aligned with the bell side.

Put the Stethoscope In your Ears Correctly

The stethoscope needs to point in the same direction as your ear canals. To properly use eartips, holding your stethoscope in front of you, ensure that the eartips are pointing forward and away from you before inserting them. (Fig.3)

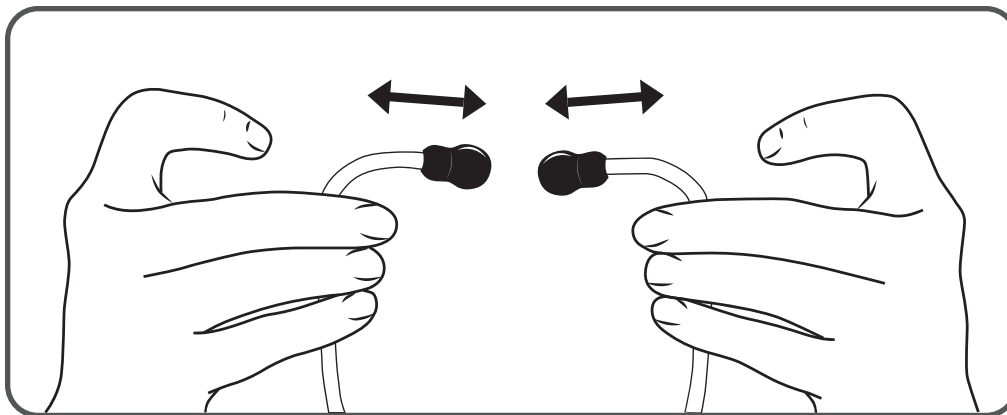


Fig.3

Put your two ear pieces, and it should point out like your nose. If it's pointed toward you, that means it is the wrong direction. (Fig.4) If this is reversed, it will affect the sound quality of the patient. And this ensures that the eartubes will align with your ear canals for comfort and maximum sound transmission.

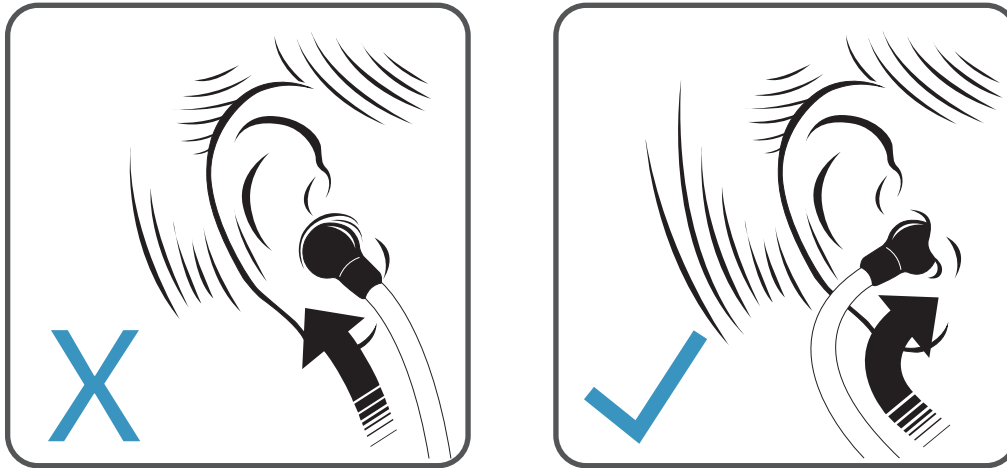


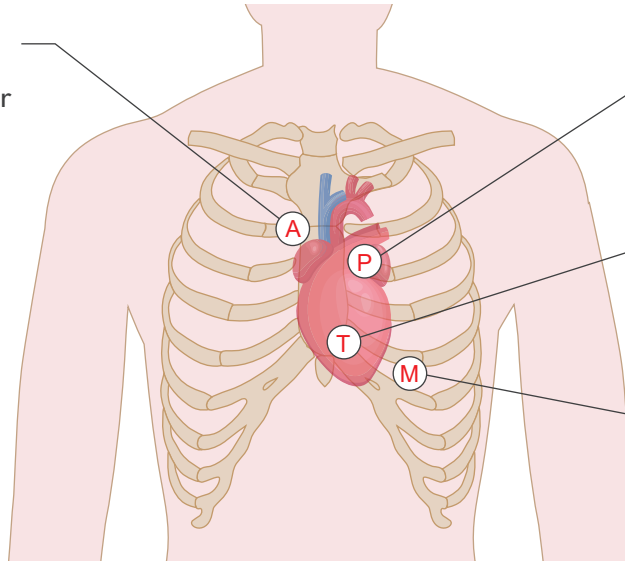
Fig.4

Locate the Heart's Position

Where to place the stethoscope

Aortic area:

Systolic murmur



Pulmonic area:

Systolic ejection murmur

Tricuspid area:

Holosystolic murmur
Diastolic murmur

Mitral area(apex):

Holosystolic murmur
Systolic murmur
Diastolic murmur

Sometimes a patient's heart is under a lot of fat or tissue or is surrounded by fluid. With some patients, you just have to keep moving the stethoscope around the heart area until you find the right positioning for it.

Adjusting the Binaural Tension

To adjust the spring tension of the binaural headset for a more comfortable fit, securely grasp both of the metal binaural tubes and either extend the tubes fully apart to reduce the tension or squeeze them together until they fully overlap to increase the tension. (Fig.5 & Fig.6).

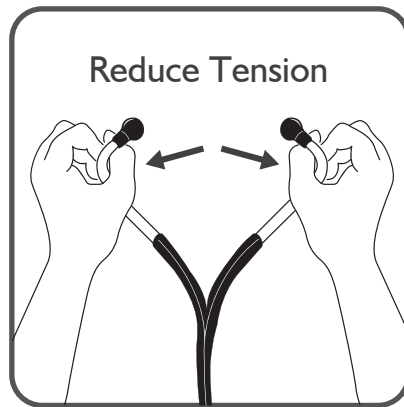


Fig.5

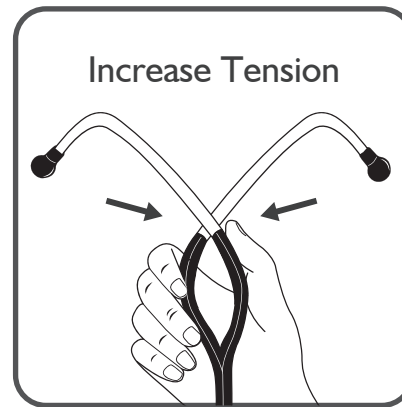


Fig.6

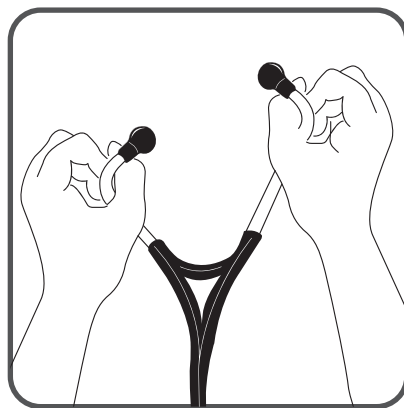


Fig.7

To make the two eartubes align in the same level, hold each eartube and stretch them up and down with opposite direction. (Fig.7) Check the eartubes after the adjustment. Repeat it as necessary.

Care and Maintenance

Remove any dust that might be obstructing sound. Obstructions in the form of lint (when carried in pockets) or dirt buildup can be eliminated with proper cleaning and maintenance.

Avoid exposing stethoscope to extreme heat, cold, direct sunlight, solvents or oils.

Do NOT immerse stethoscope in any liquid or subject to steam sterilization.

Do NOT autoclave stethoscope.

Wipe with 60% - 70% isopropyl alcohol solution.

Check the video if you are not sure about the instructions mention above:

<https://www.fricare.com/pages/stethoscope-instruction-video>

Get Your lifetime Warranty

We stand by the quality of our product by offering a basic 5 year warranty.

Register and activate your lifetime warranty with the order ID:

<https://www.fricare.com/pages/warranty>



The lifetime warranty covers the entire stethoscope (including tubing) against defects in materials or craftsmanship. Your stethoscope will be repaired or replaced without charge for the life of the instrument in case of defect. However, the lifetime warranty does not cover discolored tubing, theft, loss, improper handling, accidents, or failure to follow operating instructions.

Contact us at support@fricare.com to get the support you need and win the chance for new product test and giveaways.

Product development needs to get the most authentic experience from users. We hope to receive your most valuable opinions and suggestions regarding our products or service.

Feel free to rate your experience here:

<https://www.amazon.com/review/create-review/?asin=B07G16GLTX&>





www.fricare.com

Distributed by FriCARE
Medical LLC, 251 Little Falls
Drive, Wilmington, DE