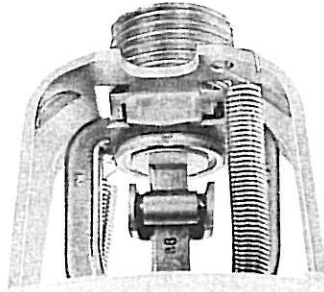


Product Data: ECLIPSE SPRINKLER



GENERAL DESCRIPTION

The Eclipse sprinkler head is designed for use in finished ceiling areas where the ultimate in aesthetic appeal is necessary. The Eclipse sprinkler incorporates the basic Model LD-2 sprinkler, designed with a special housing assembly. The entire unit is easily installed in the ceiling and covered from view. The only visible evidence of the sprinkler's presence in a room is the cover plate, which can be ordered in chrome plated, white, or special painted finishes to blend in with the ceiling decor.

The simple two-step operation of the Eclipse sprinkler makes it one of the most dependable available. The cover plate is attached to the sprinkler by two clips which are spring-loaded so that the plate stays flush and resists movement from vibration. A eutectic alloy holds the clips to the cover plate. At the designed temperature, the alloy melts and the cover plate falls away, revealing the stationary Model LD-2 sprinkler already in position for action. The operating mechanism of the sprinkler head fuses and a spray of water is released.

TECHNICAL DATA

The temperature ratings 135°F, 165°F and 212°F are UL, ULC listed.

Discharge Coefficients:

1/2" orifice K=5.7 (82.2)

Maximum Working Pressure:

175 psi (1206 kPa)

Temperature Ratings:

135°F, 165°F and 212°F
(57°C, 74°C, and 100°C)

Physical Characteristics:

1/2" orifice (12.7mm) with
1/2"NPT

Finishes:

Cover plates are stocked in bright chrome finishes as well as flat white.

Covers will be painted any color desired, provided a paint match sample is provided by the purchaser. Do not paint cover plates! Only factory applied finishes are approved!

ORDERING INFORMATION

Please specify:

1. Sprinkler Temperature
2. Temperature rating of Cover Plate
3. Cover Plate finish
4. Quantity
5. Wrench quantity

Shipping Information:

50 sprinkler units packaged

14-1/2" x 14-1/2" x 6-3/4" (0.82 cubic feet) 18 lbs. (8.2 kgs., .02 cubic meters).

Cover plates shipped separately, 50 units packaged 19-1/8" x 7-1/8" x 4-1/4" (0.33 cubic feet) 5 lbs. (2.3 kgs., .01 cubic meters).

MAINTENANCE AND SERVICE:

Sprinkler inspections should be made on a regular basis to detect possible damage or alterations. Automatic sprinklers should be replaced if they are painted, corroded, damaged or if they have been in service over 50 years. A sprinkler that has been fused cannot be reassembled and reused. Replacement must be made with a sprinkler of the same size, type and temperature rating. Always use an **Eclipse** sprinkler wrench for installation and removal of sprinklers. Use of a different wrench may damage the sprinkler and will automatically void all warranties. Refer to National Fire Protection Association pamphlet No. 13A for further information.

INSTALLATION

Concealed sprinklers should be installed in accordance with the latest published standards of the National Fire Protection Association for governing jurisdictional authorities. They can be easily installed on wet pipe systems and require no special fitting. Use only the **Eclipse** installation wrench and spring connecting

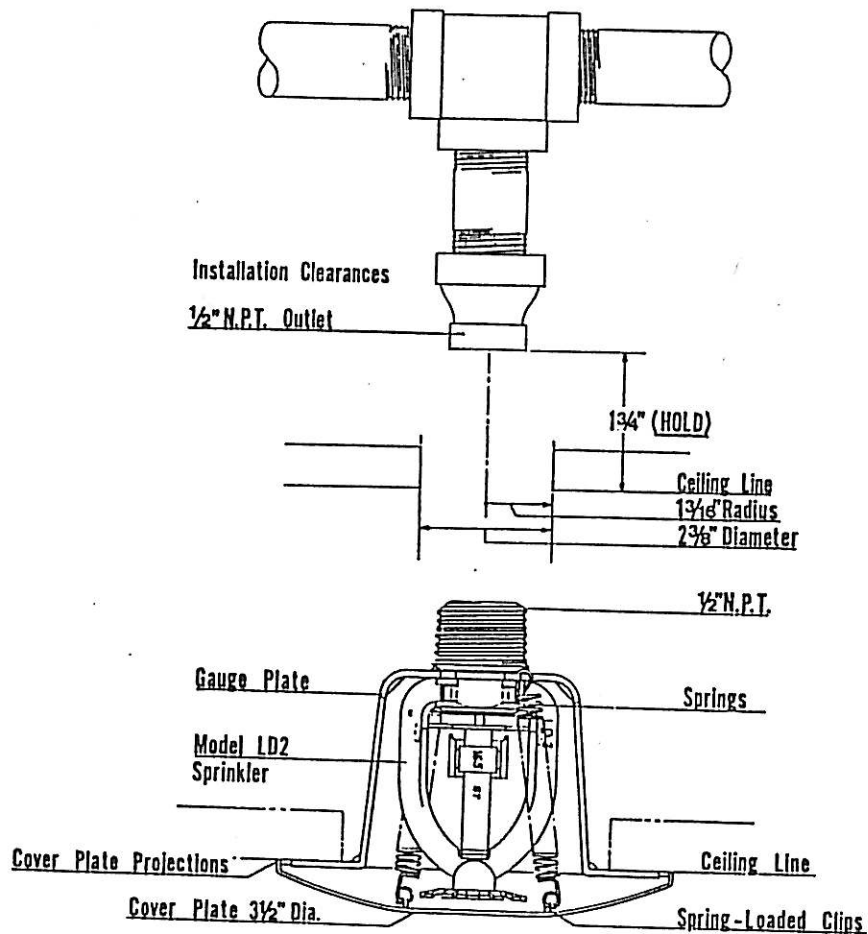
tool to install the Eclipse sprinkler and cover plate. Install in standard 1/2" pipe outlets. Provide ceiling recess and clearances as shown in drawing. Install gauge plate flush to bottom of ceiling.

Cover plate should not be handled until ready for final assembly to avoid marring finish or damaging cover clips. The cover plate should fit flush

to ceiling line. A 1/16" gap between the cover plate and ceiling line may be noticeable. Do not press the cover plate projections on the cover plate into the ceiling.

CAUTION

This sprinkler should not be used if the space above the ceiling is used for delivery (positive pressure) in an HVAC system.



**STAR
SPRINKLER
CORPORATION**

Box 511 • 307 West Layton Avenue
Milwaukee, WI 53201
(414) 769-5500 • 1-800-558-5236

PRINTED IN U.S.A.