

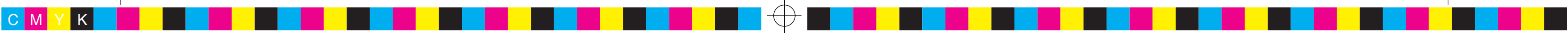
Outer dotted line is bleed, extend all background images to this line.
Middle solid line is cut line, this is where the art will be cut.
Inner dotted line is safety margin, keep all important elements within this line.
Keep "Guides" layer locked, work only on "Art" layer, or new layers you create.



 NOTE: RED DIELINE
WILL NOT PRINT.
FOR VISUAL ONLY.



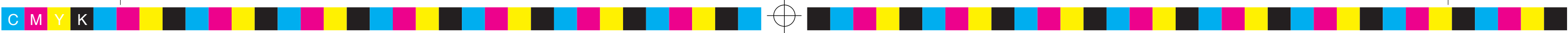
Order XXXXX



Outer dotted line is bleed, extend all background images to this line.
Middle solid line is cut line, this is where the art will be cut.
Inner dotted line is safety margin, keep all important elements within this line.
Keep "Guides" layer locked, work only on "Art" layer, or new layers you create.



 NOTE: RED DIELINE
WILL NOT PRINT.
FOR VISUAL ONLY.



Order XXXXX