

DESCRIPTION

The 1Kbp DNA Ladder consists of 8 DNA fragments ranging from 1Kb to 10Kb (1000, 2000, 3000, 4000, 5000, 6000, 8000, 10000bp). The 4000bp band has increased intensity to serve as a reference point.

The fragments may be stained with intercalating agent (e.g. UniSafe Dye®) and should be run on a 0.5-1% agarose gel for maximum visualization. It is suitable for use as molecular weight standards for agarose gel electrophoresis. 1kb DNA Ladder already contains 1x Loading dye.

FEATURE

- Ready-to-use;
- Concentration: 90ng | µl;
- Recommended Loading: 5µl; Per lane.
- Range (Kb): 1–10;
- Number of Bands: 8.

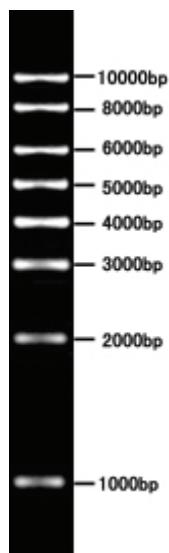
STORAGE BUFFER

- 10mM Tris-HCl (pH 8.0), 1mM EDTA.

STORAGE TEMPERATURE

- Store at -20°C.

FIGURE



0.8% agarose gel in 1x TAE buffer