



Ezcad3 Rotary Marking

User Guide

Version 1.0 (2022.09)

PREFACE

Dear Customer:

Thank you for choosing Cloudray Laser System.

This fiber laser marking machine is intended for personal and professional use.

Cloudray is committed to providing the highest level of customer satisfaction and support. To ensure a favorable customer experience, we urge you to thoroughly read the documentation provided with your equipment.

Your satisfaction is essential to us, and we welcome your feedback. Tell us about your experience with Cloudray Laser Systems and our products.

Should you have any questions, please email the Cloudray Support Team.

Again, thank you for choosing Cloudray.

Sincerely,

Cloudray Laser



Cloudray cannot be held responsible for any direct or indirect damages, which result from using or working with the products electric circuits or software described herein. The apparatus must be used only by trained and skilled personnel. Before use the manual should be read and followed carefully.

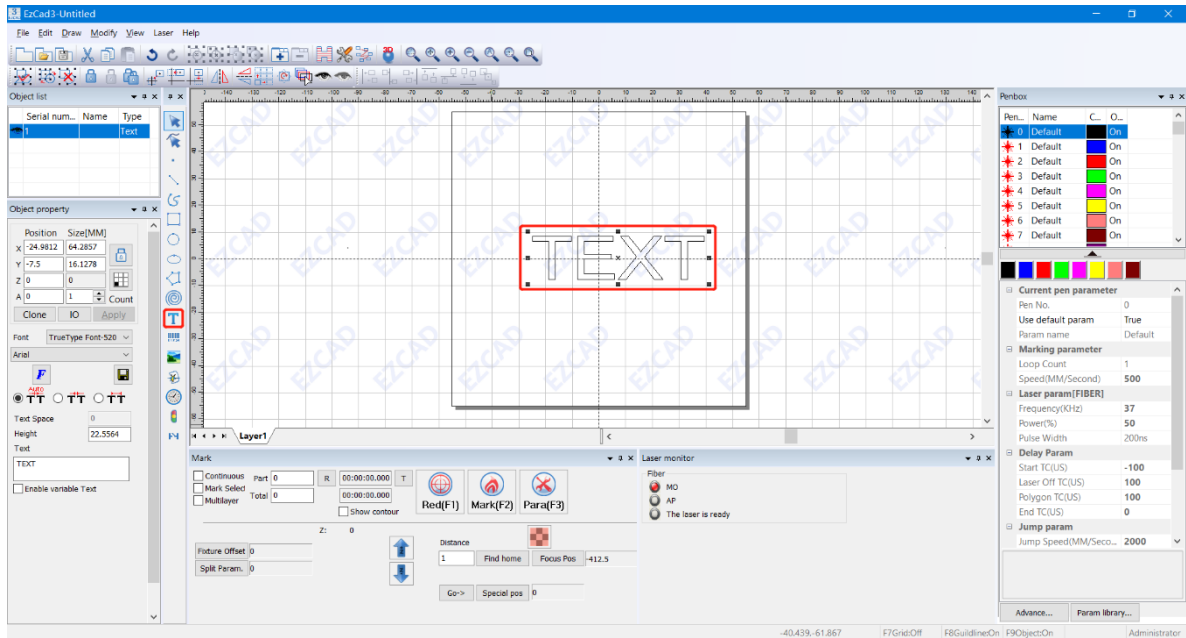
Furthermore, Cloudray reserves the right to change or alter any product described herein without prior notice.



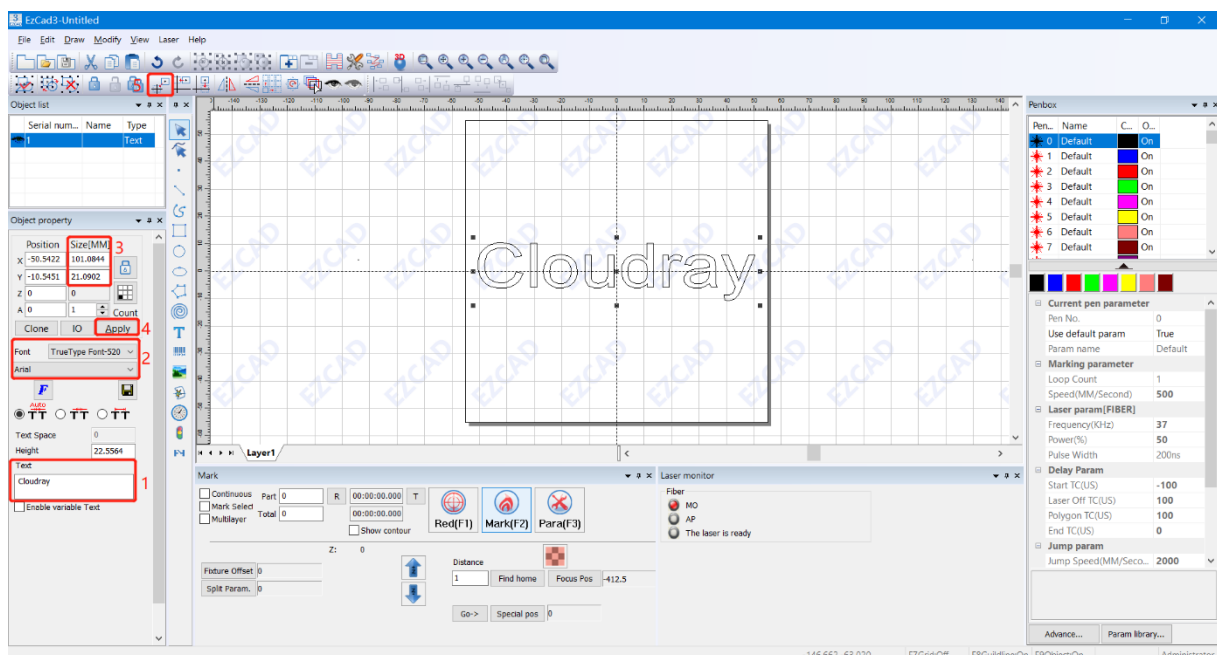
Important: Following steps are the operation steps after the laser control and the galvo control are normally debugged.

1. Text Creation

- Click the "T" icon in the creation bar on the left side of the software, and click to create the "TEXT" text in the workspace.



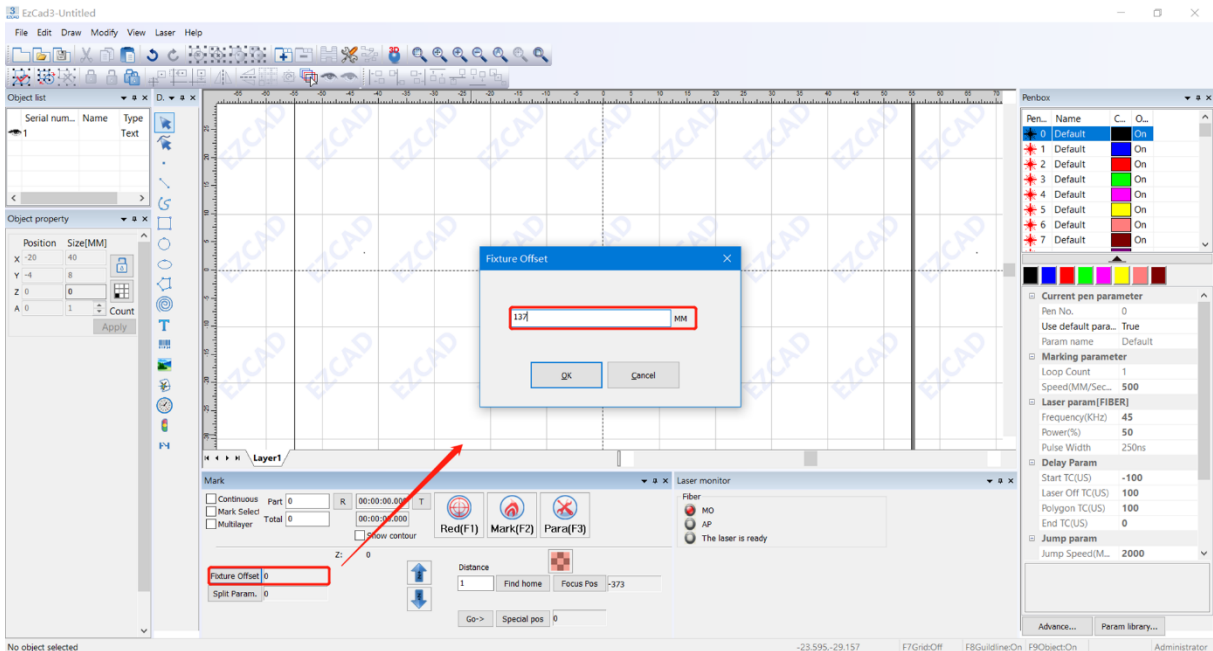
- Select the text and set the following text information in sequence in the object property on the left side of the software: Text >> Font >> Size >> Put to origin >> Apply.



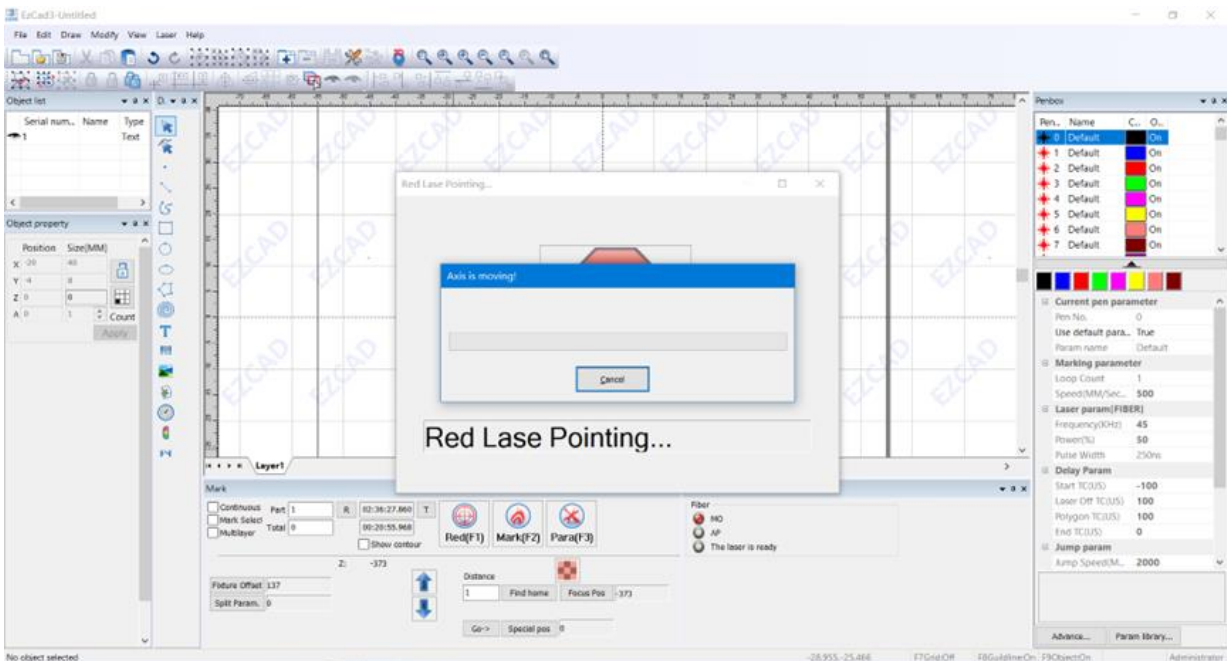
***Notice:** You can import vector files or picture files(only the software supports the format).

2. Fixture Offset Setting

- Measure the distance from workbench to rotary workpiece, fill in the value to "Fixture Offset"

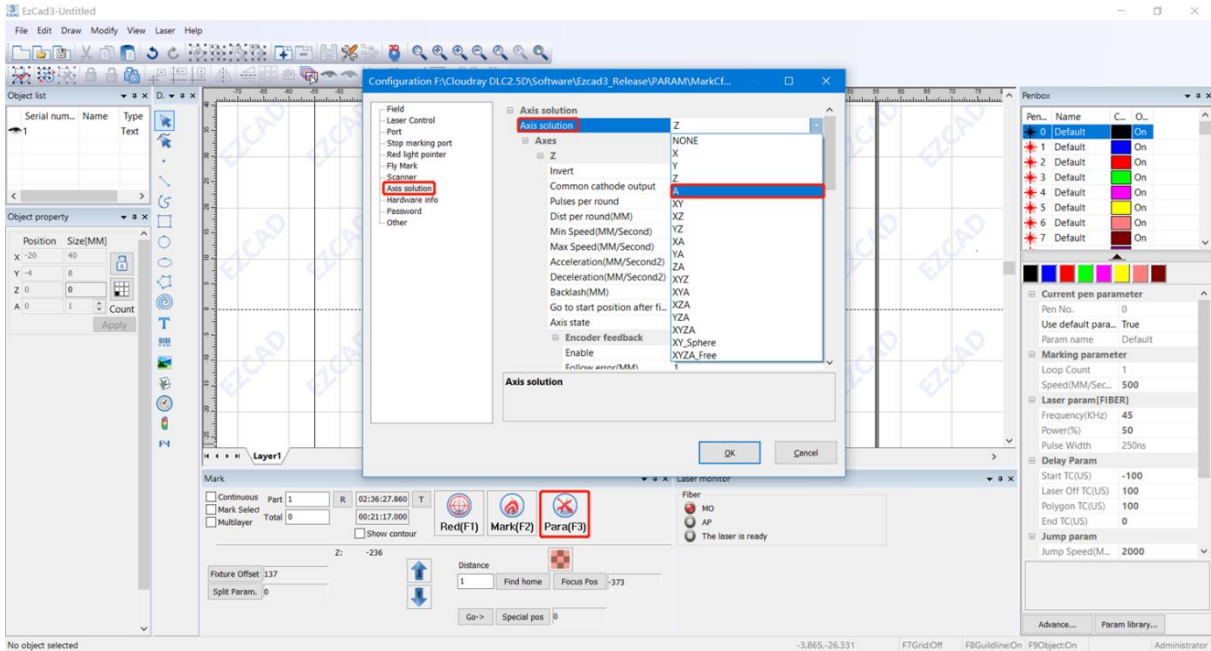


- Click the "Red(F1)" icon, now the light path will rise to the corresponding height.

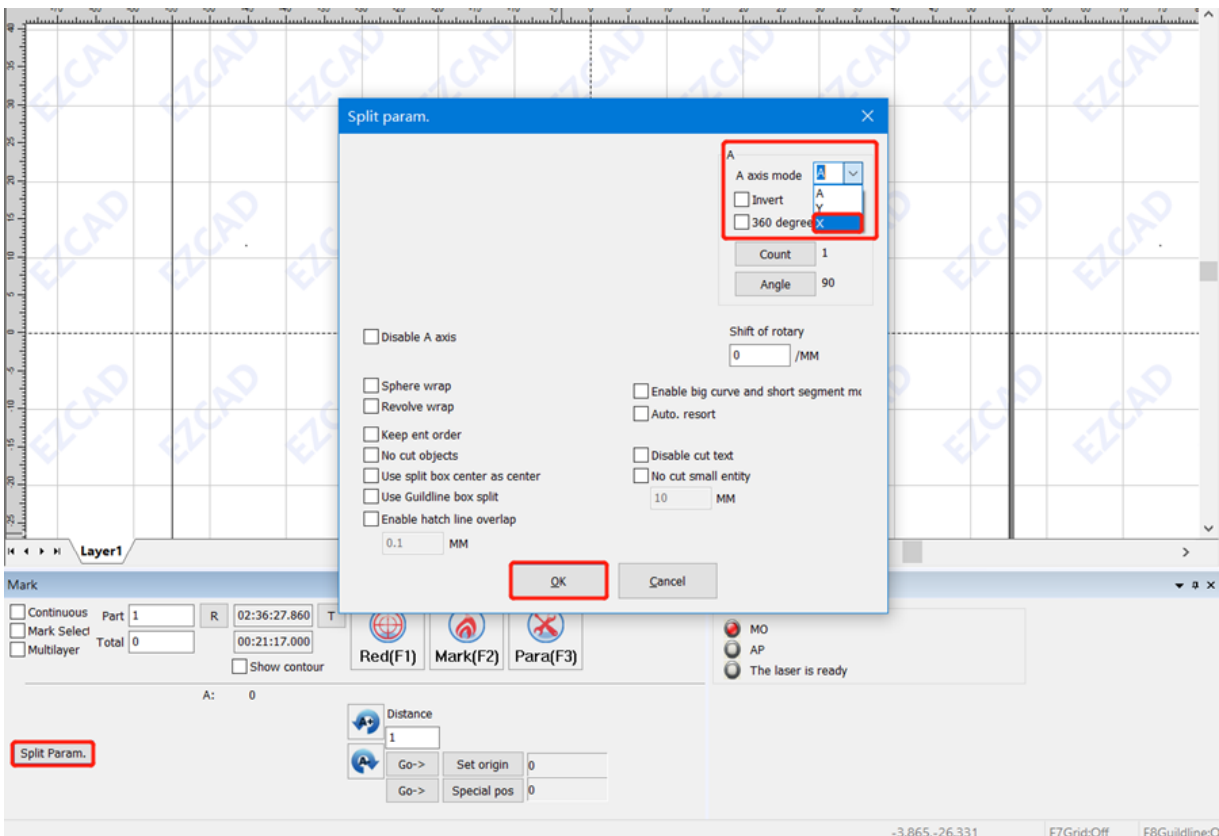


3. Axis Setting

- Click “Para(F3)” icon, choose axis solution “A”, click “OK”.

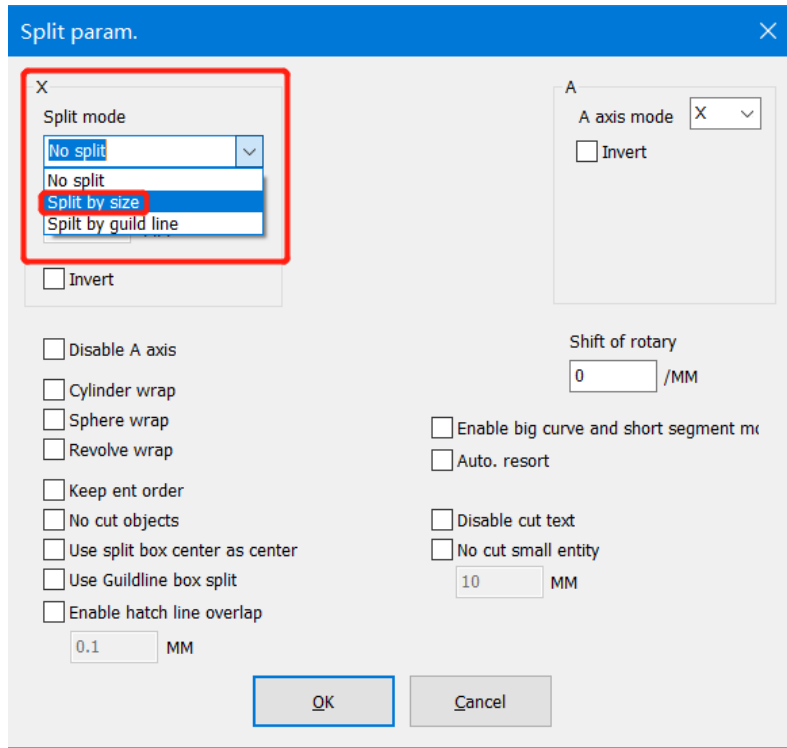


- Click “Split Param” icon, choose A-axis mode X or Y (depends on the vertical or horizontal placement direction of the rotary), then click “OK”.

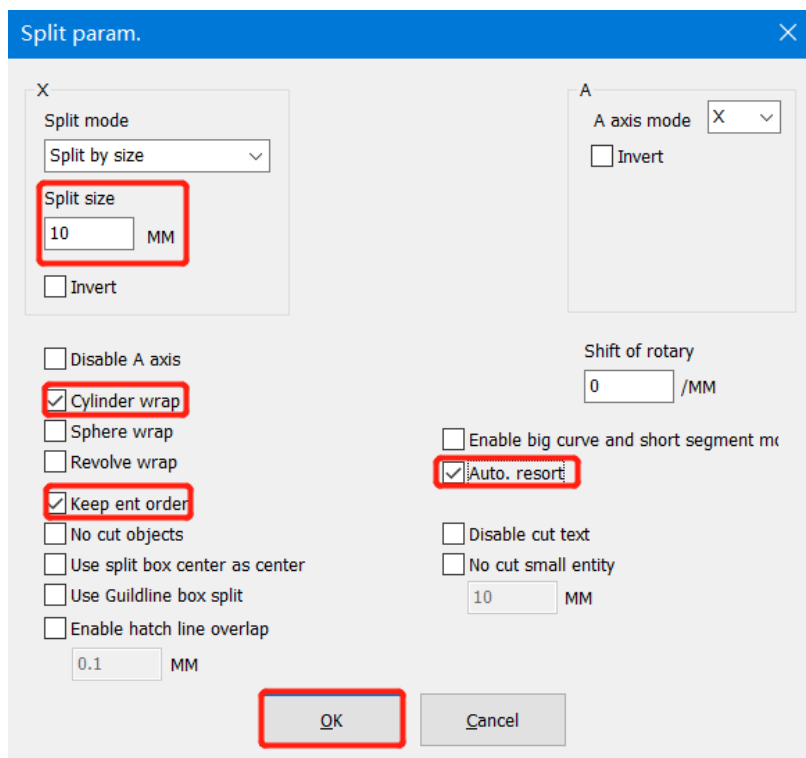


4. Split Param. Setting

- Split mode choose “split by size”,

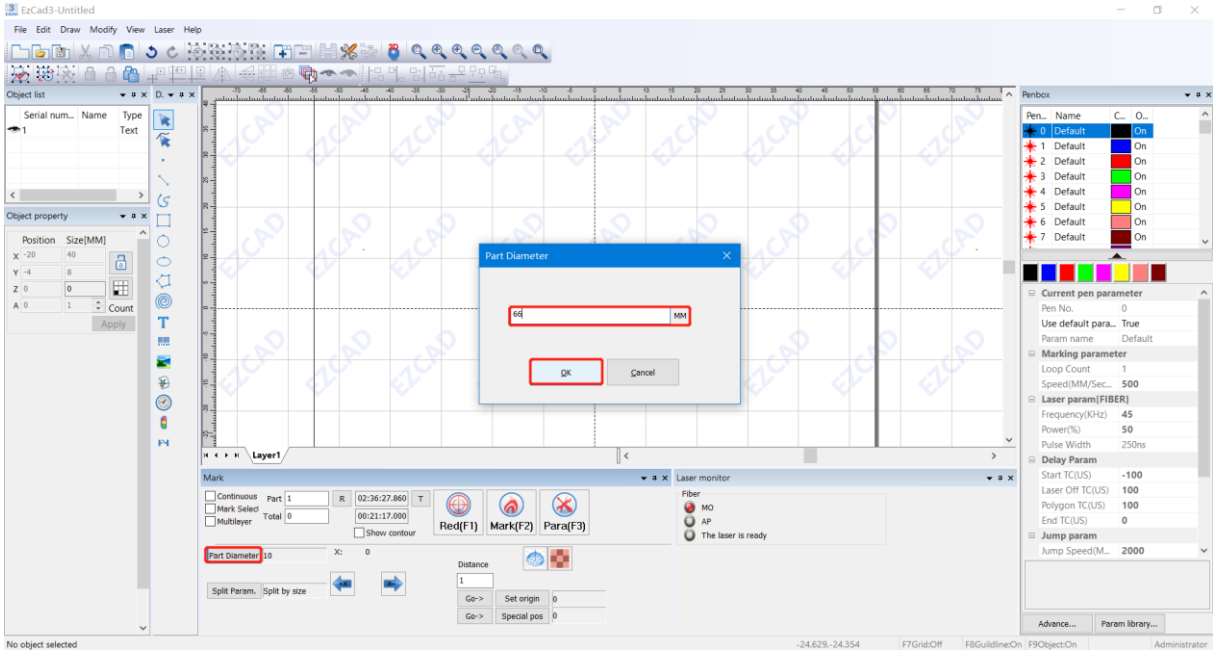


- Enter in the appropriate split size according to the workpiece diameter, and check “Cylinder wrap”, “Keep ent order” and “Auto. Resort”, click “OK”.

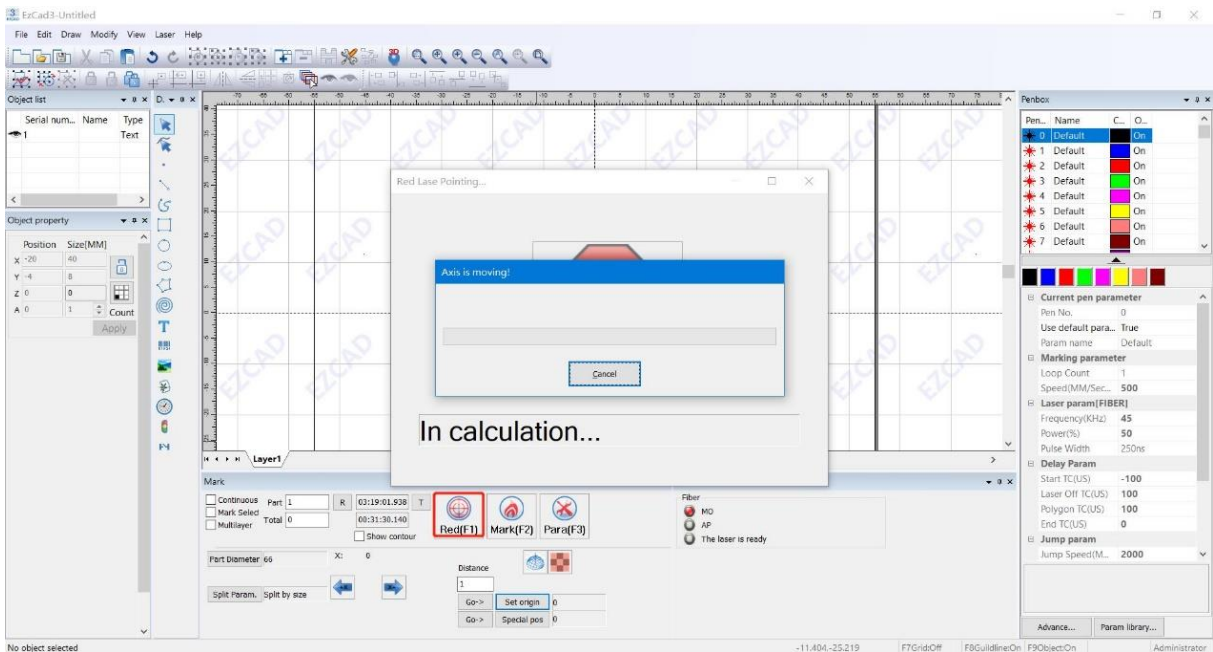


5. Part Diameter Setting

- Click “Part Diameter” icon, enter workpiece diameter.

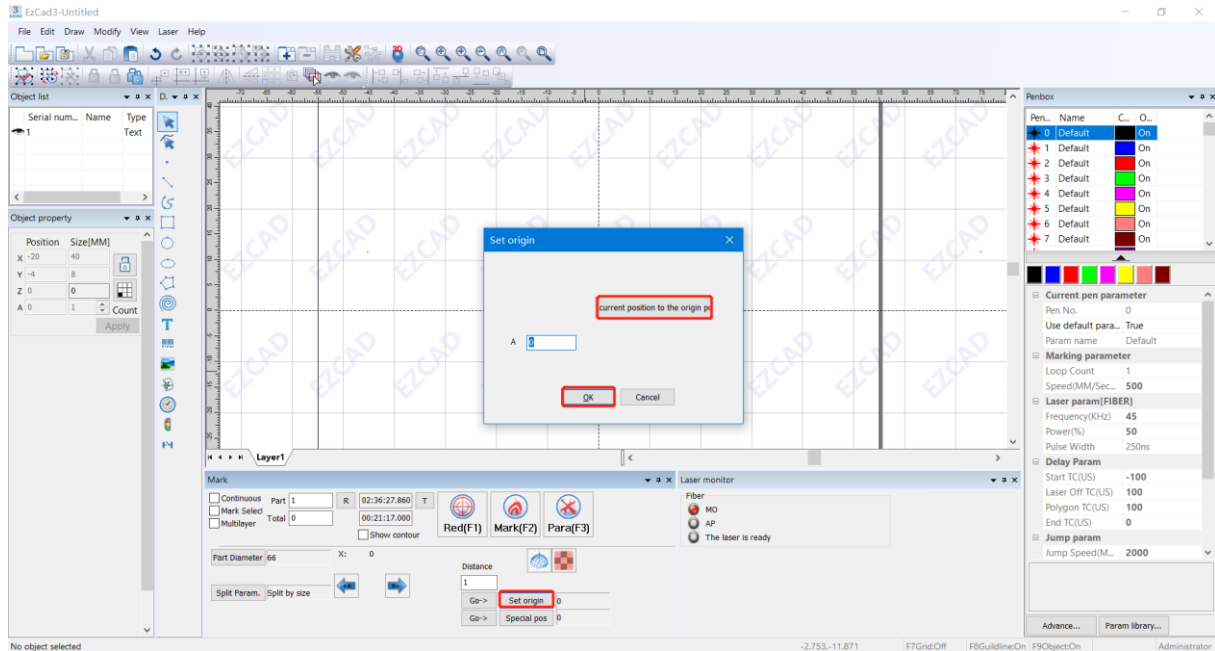


- Click “Red(F1)” icon, now the software calculation parameters.

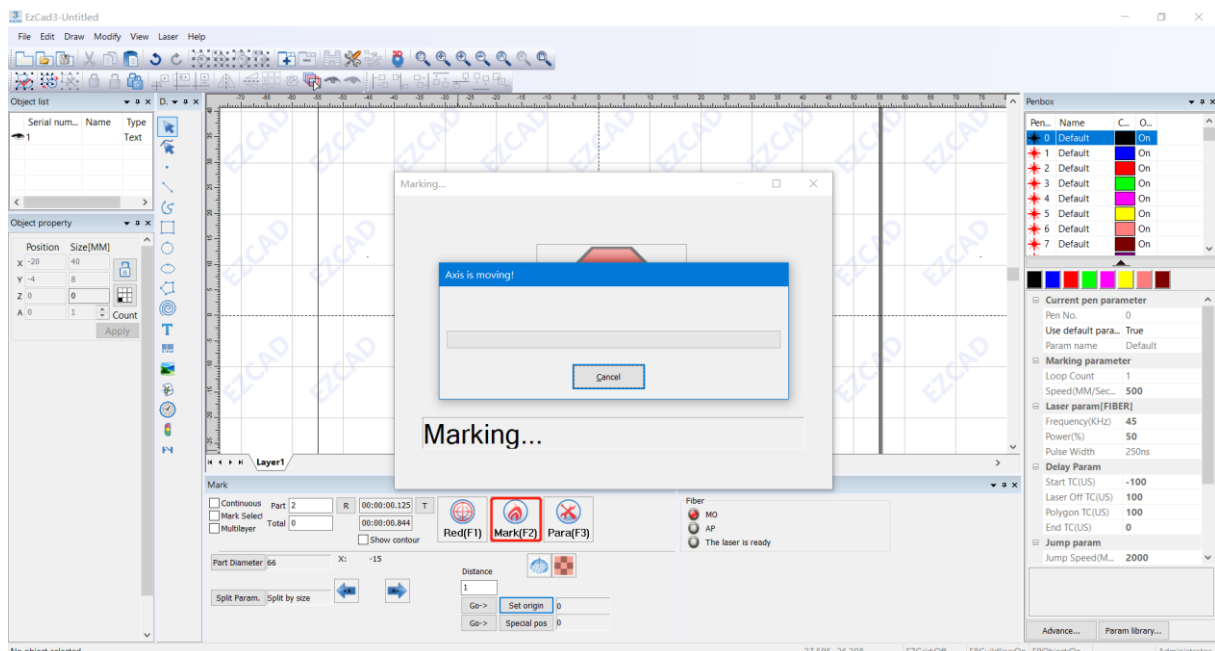


6. Start Marking

- Click “Set origin” icon, choose current position to the origin position.



- Click “Mark(F2)” icon to start marking.



***Note:** Due to the different laser configurations of different machines, different materials need to be set with different parameters, and the parameters may need to be adjusted several times before normal work, thank you!