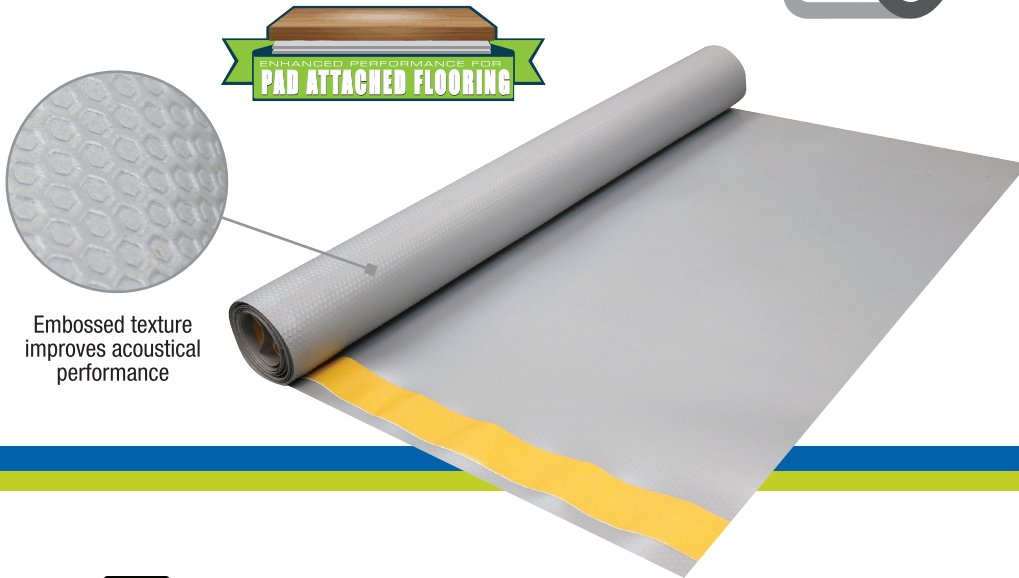


SoundStep

LUXURY VINYL



Embossed texture improves acoustical performance

For Use Under



- Vinyl Plank
- WPC/SPC/Rigid Core
- Laminate
- Solid/Engineered Hardwood

Installation Methods

- Floating
- Double Glue Down
- Mechanically Fastened

Delta Δ **IIC** UP TO **22**
IIC 70 | **STC 62**
6" concrete WITH ceiling assembly 6" concrete WITH ceiling assembly



Made from economical, dense crosslink foam materials.



Helps to keep unwanted sound from traveling to other rooms.



Integrated moisture barrier, helps to protect flooring from harmful subfloor moisture.



Crush resistant dense foam material properly supports a variety of floors including Vinyl Plank, Laminate, Solid and Engineered Harwood.

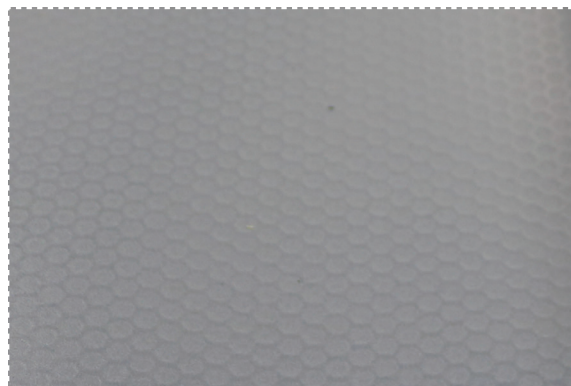
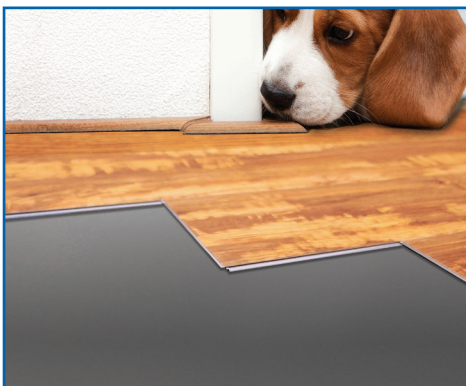


Integrated seam tape for fast and easy installation.



Approved for use with radiant heat systems.

MADE IN
USA 
with US & Global Parts



INSTALLATION METHODS

FLOATING FLOORS

1. Roll out underlayment and flip over so vapor barrier side is facing up and butt seams together
2. Apply moisture barrier seam tape, and ensure underlayment seams run perpendicular to the floor covering seams
3. Click & lock floating floors over the top according to manufacturer

SINGLE GLUED DOWN FLOORS

1. Roll out underlayment and flip over so vapor barrier side is facing up and butt seams together
2. Float the underlay ensuring seams run perpendicular to the flooring seams and apply a 2" wide clear packaging tape centered over the seam
3. Adhere flooring over the top using floor manufacturer's recommended adhesive and trowel size. Follow all adhesive manufacturer's instructions for appropriate bonding.

DOUBLE GLUED DOWN FLOORS

1. Roll out underlayment and flip over so vapor barrier side is facing up and butt seams together, ensure seams run perpendicular to the flooring seams
2. Adhere to subfloor using pressure sensitive adhesive and recommended trowel size and install method
3. Roll over the underlayment with a 75 or 100 pound roller
4. Adhere flooring over the top using floor manufacturer's recommended adhesive and trowel size. Follow all adhesive manufacturer's instructions for appropriate bonding

SOLID & ENGINEERED NAIL-DOWN HARDWOOD

1. Be sure the subfloor is clean and free of dust and debris
2. Unroll the underlayment and place embossed side down to the subfloor.
3. Install underlayment in opposite direction to the laminate or hardwood floor. Start in a corner and roll out underlayment, installing it flush to the walls.
4. Continue the next row in the same manner until the whole room is covered. You can tape the seams but it is not necessary.
5. Install the hardwood per manufactures written instructions. Install baseboard slightly off floor to avoid flanking path.

*ENSURE TO READ THE COMPLETE INSTALLATION INSTRUCTIONS BEFORE INSTALLATION

ADVANTAGES

- Excellent sound rating: Delta Δ sound rating = Up to 22
- Designed to support all luxury vinyl and multilayer flooring
- Superior compression characteristics for support
- Reduces reflective noise & floor sound transmission
- Can use over concrete and wood subfloors
- Suitable over radiant heated floors

LIMITATIONS

SoundStep is not suitable for use as underlayment for:

- Ceramic tile
- Carpet
- Sheet-vinyl
- VCT

Installations over concrete in high moisture areas (vapor emission rate above 3 lbs/ 1000 sq ft/ 24 hrs) will require additional protection such as a concrete sealant or polyethylene vapor barrier.

APPROVED SUBSTRATES

- Dry, completely cured concrete (at least 28 days old)
- Concrete and masonry blocks
- Cement backer units (CBU)
- Cementitious screeds, leveling coats and mortar beds
- Waterproofing and crack-isolation membranes
- Wood, plywood, or OSB subfloors that meet NWFA Subfloor Guidelines & Specifications, and meet applicable building codes.
- Cement terrazzo floors

TECHNICAL DATA

- Weight 3 lbs. per Roll
- Thickness 1mm
- Density 8# (+/-10%)
- WVTR..... 0.18 lbs/1000sqft/day per ASTM E96
- Compression Resistance@25% 11.5 psi
- Compression Resistance@50% 23.5 psi
- Compression Set@25% 11.00%
- R-Value(@1mm) 0.20 hr-ft²-degF/Btu
- Antimicrobial Protection..... No

SOUND PROPERTIES

IMPACT SOUND TRANSMISSION

The method is designed to measure the impact sound transmission performance of a floor-ceiling assembly in a controlled laboratory environment.

IIC	Flooring	Sub-floor
70	4mm Floating Plank	over a 6" concrete subfloor with a suspended ceiling
50	4mm Floating Plank	over a 6" concrete subfloor with NO ceiling
69	2mm Glued Plank	over a 6" concrete subfloor with a suspended ceiling

SOUND TRANSMISSION LOSS

The sound-insulating property of a partition element is expressed in terms of the sound transmission loss.

STC	Flooring	Sub-floor
62	4mm Floating Plank	over a 6" concrete subfloor with a suspended ceiling
51	4mm Floating Plank	over a 6" concrete subfloor with NO ceiling
61	2mm Glued Plank	over a 6" concrete subfloor with a suspended ceiling

DELTA TEST

Tests the impact insulation difference between a bare concrete subfloor with no flooring materials and the same concrete subfloor with flooring and underlayment.

Delta IIC	Flooring
Up to 22	SoundStep LV under Wood Plastic Composite (WPC)

PACKAGING

36"x33.33' (100 sq ft) do-it-yourself size rolls.

96 rolls per pallet | 64 pallets per truck **SSXLLV100**

36"x67' (200 sq ft) do-it-yourself size rolls.

50 rolls per pallet | 64 pallets per truck **SSXLLV200**