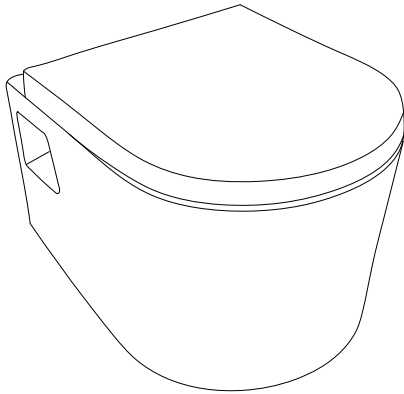


HÄFELE

Installation Guide

Toilet



Wall-hung Toilet

Installation instructions

Before installation it is required to ensure that the item has no defects occurred while transporting and all component parts are available.

Claims for defects caused while transportation, damaged surfaces and absence of component parts are not accepted after installation

It is required to follow installation requirements specified in the instructions

Installation tools are not included into component kit

Product maintenance

Glazed surface is cleaned easily. Please, use soft cloth or sponge, soap solution and water for easy cleaning. Wipe surface with dry cloth after cleaning.

Please, do not use sponges with abrasive surface and solvents that damage surface. Damages resulted from incorrect maintenance are not warranty event.

The installation should be carried out by a qualified professional. Manufacturer reserves the right to introduce change of component parts which has no effect on appearance and functionality of the item, keeping declared warranty period

ATTENTION

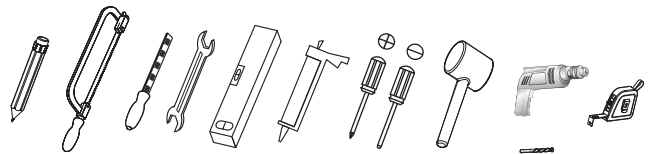
Use the item as intended, Do not flush metallic objects, do not pour hot water and remnants of friable solutions

We recommend to use sealants for purposes of hygiene and non-ingress of moisture under ceramics.

Auxiliary materials (silicone, sealants, etc) are purchased separately

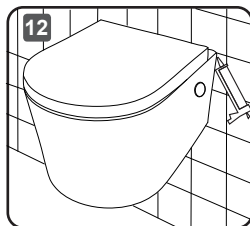
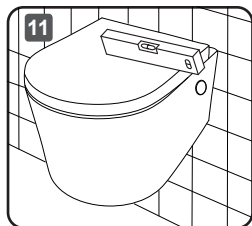
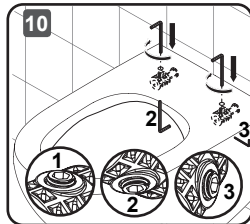
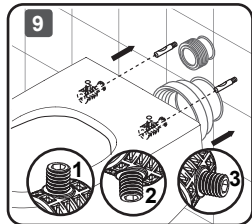
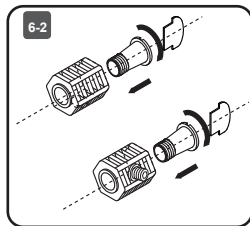
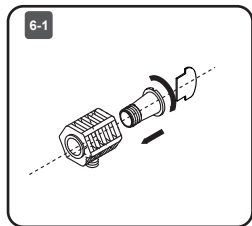
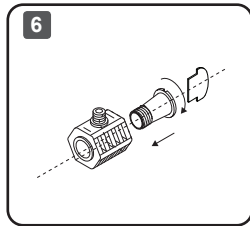
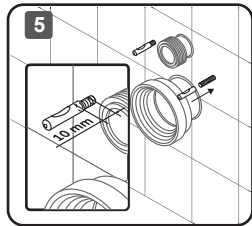
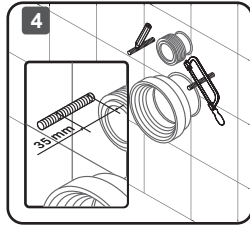
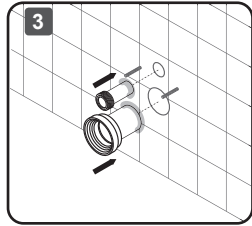
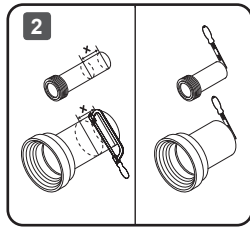
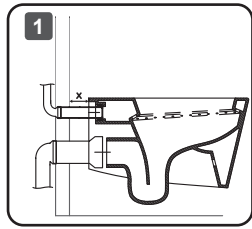


Wall-hung Toilet





Wall-hung Toilet



Wall-hung Toilet

