

DS-337
PAGE 1 OF 3
2/16/99
ER # 7943

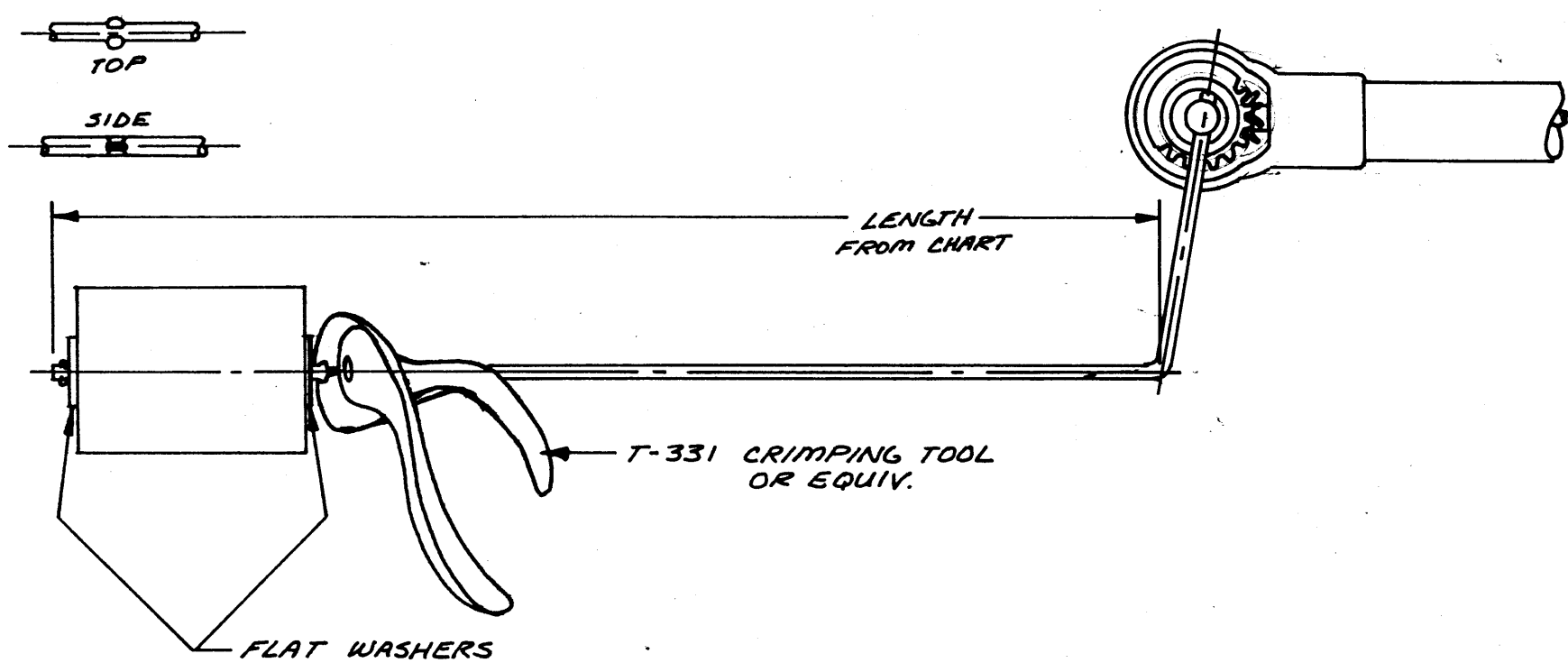
FLOAT CUT-OFF LENGTHS FOR 6540-95, 6540-105, 6580-151, 6781-248,
6741-183, 8741-8, & 8741-20

NOTE: THE GIVEN CUT-OFF LENGTH WILL ALLOW APPROXIMATELY 1" CLEARANCE TO THE BOTTOM OF TANK @ EMPTY ON TANKS 8" DEEP OR DEEPER. (SLIGHTLY LESS CLEARANCE PROVIDED FOR 6" & 7" DEEP TANKS)

TANK DEPTH IN INCHES	DISTANCE FROM FLOAT BEND TO FLOAT ROD CUT-OFF POINT
6	3"
7	3-3/4"
8	4-5/8"
9	5-5/8"
10	6-5/8"
11	7-5/8"
12	8-5/8"
13	9-3/4"
14	10-3/4"
15	11-3/4"
16	12-3/4"
17	13-3/4"
18	14-7/8"
19	15-7/8"
20	16-7/8"
21	17-7/8"
22	18-7/8"
23	20"
24	21"
25	22"
26	23"
27	24"
28	25-1/8"
29	26-1/8"
30	27-1/8"
31	28-1/8"
32	29-1/8"
33	30-1/4"
34	31-1/4"
35	32-1/4"
36	33-1/4"

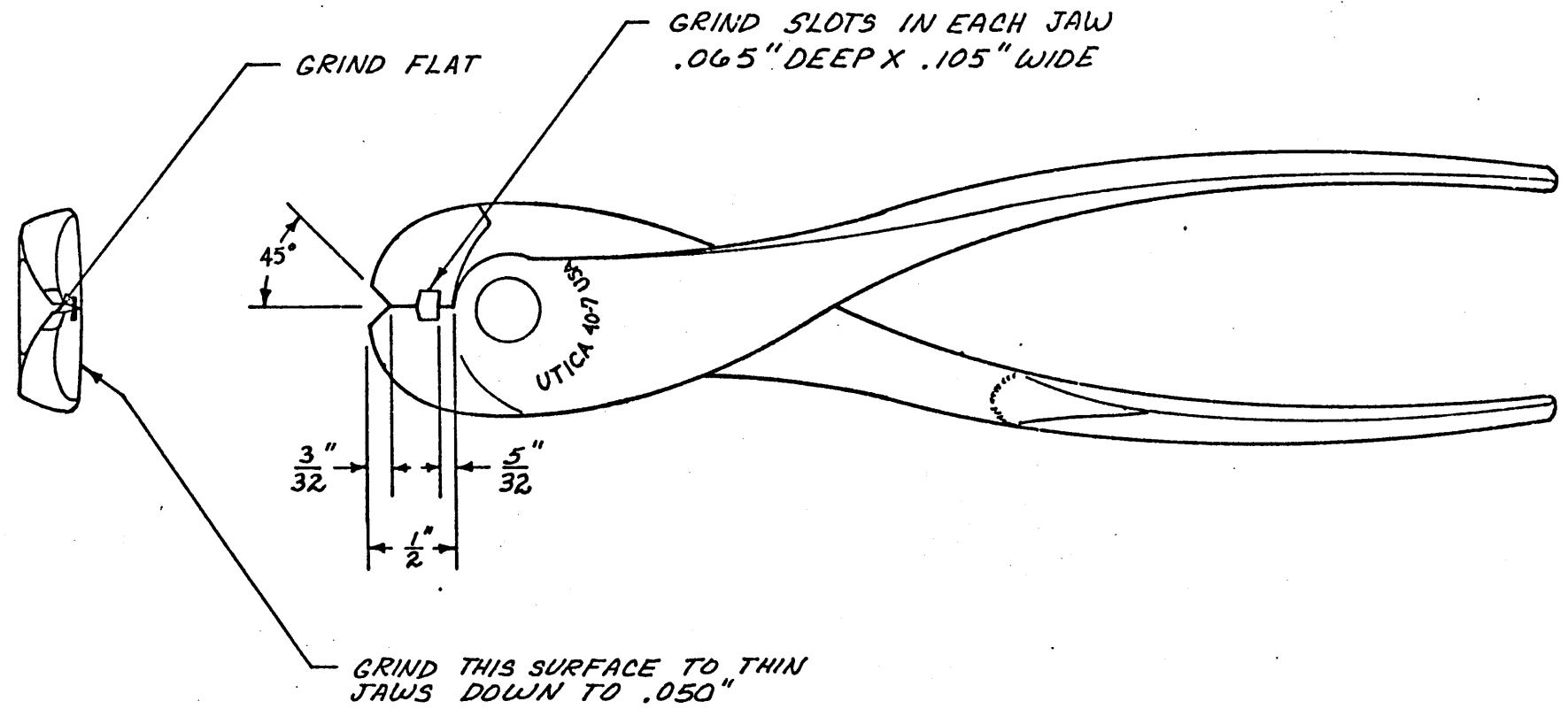
MATERIAL	COLOR	DRAWING NUMBER D.S.- 337
----------	-------	-----------------------------

CRIMP DETAIL



A	SHEET 2 OF 3 WAS 2 OF 4 (SHEET 4 DELETED)		2698	10-10-95								
LET.	REVISION	E.R.*	DATE	LET.	REVISION	E.R.*	DATE	LET.	REVISION	E.R.*	DATE	
TOLERANCES NOT SHOWN			ANG. ± 1, DEC. ± .005; FRACT. ± 1/64" MAT'L. COMPL. TOLERANCES			DO NOT SCALE DRAWING	SUPERSEDES NEW	DR. MINETTE	CHK. TM	E.R.NO. D-2455	USED 6781-248, 6741- ON 183, 6580-151	
ROCHESTER GAUGES, INC., OF TEXAS DALLAS, TEXAS, U.S.A.						SCALE NONE	DATE 2-18-80	PART NAME FLOAT CUT INSTRUCTION			DRAWING NUMBER D.S.- 337	

MATERIAL	COLOR	DRAWING NUMBER T-331
----------	-------	-------------------------



A	SHEET 3 OF 3 WAS 3 OF 4 SHEET 4 DELETED	2698	10-10-95								
LET.	REVISION	E.R.#	DATE	LET.	REVISION	E.R.#	DATE	LET.	REVISION	E.R.#	DATE
TOLERANCES NOT SHOWN		ANG. ± 1, DEC. ± .005; FRACT. ± 1/64"		MAT'L: COMM. TOLE.		DO NOT SCALE DRAWING		SUPERSEDES NEW		DR. MINETTE	
ROCHESTER GAUGES, INC., OF TEXAS		DALLAS, TEXAS, U.S.A.		SCALE NONE		DATE 2-21-73		PART NAME CRIMPING TOOL, ADJUSTABLE FLOAT		CHK. C.A.T.	
										USED ON 65-53 LOOSE	
										DRAWING NUMBER T-331	